

**5 Rushall Street Pymble NSW**

4  3  2 

Appealing architect designed Contemporary with open plan design and excellent flow to the outdoor entertaining and alfresco dining. Floor to ceiling windows, polished timber floors, open plan living and high ceilings. Gourmet kitchen and casual living area flows to a sunny terrace and sun drenched swimming pool. Superb fully fenced secure grounds with intercom access.

Situated in a prime east side position, the residence is conveniently located with an easy walk to Pymble Public School and just moments from bus and rail transport, local shops and cafes and popular private schools.

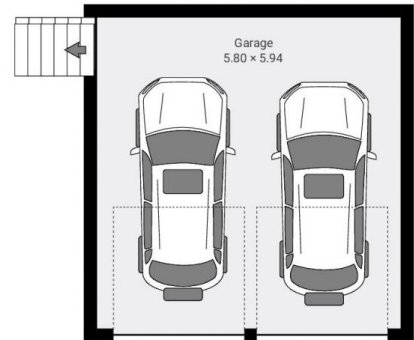
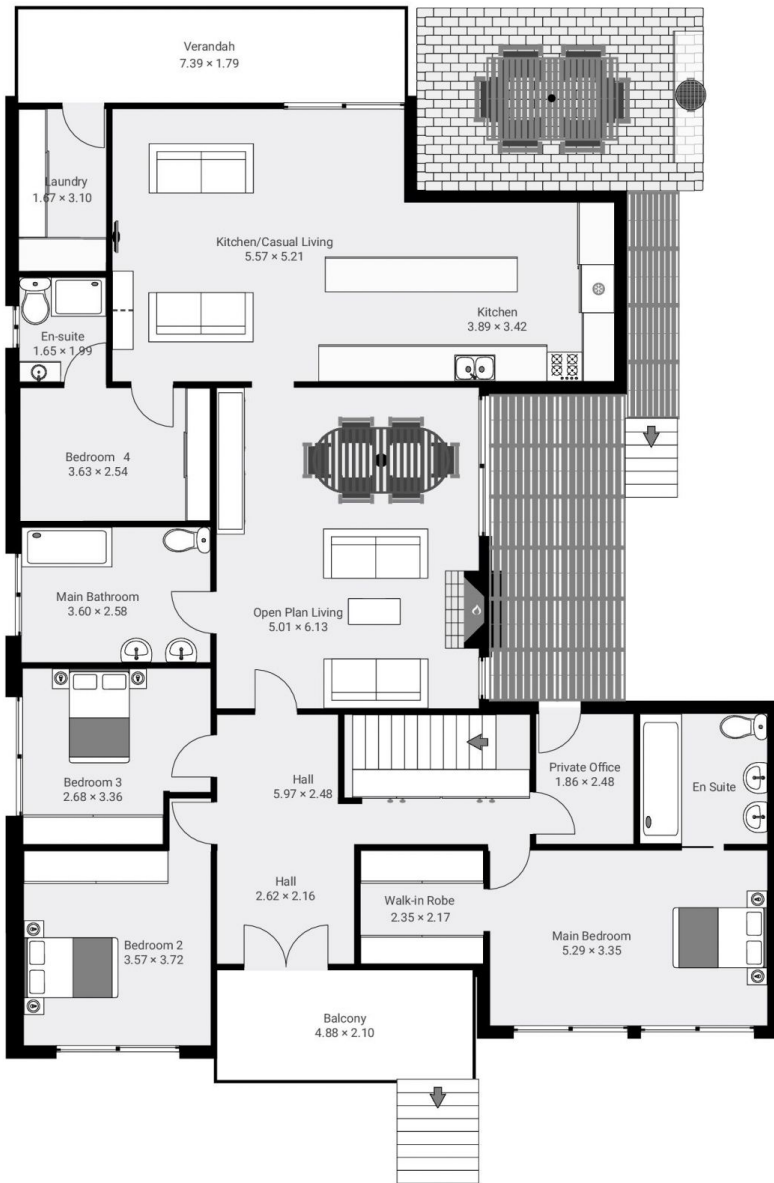
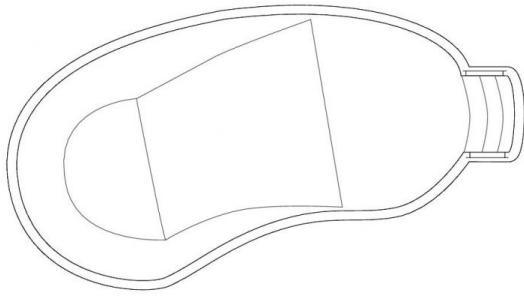
The Accommodation:  
\* Impressive entry foyer

**Type** : House  
**Land Size** : 1800 sqm  
**View** : <https://www.luschwitz.com.au/8253822>



**Leasing Team**  
**(02) 9449 5511**

[For full version visit the website](#)



Land: 1800m<sup>2</sup>  
Residence: 350m<sup>2</sup>

Plans are intended as a guide only. No representations or warranties of any nature whatsoever are given or intended and any person using this information should always rely on their own enquiries. [jinteriors - real estate floor plans. jinteriors.info@gmail.com](mailto:jinteriors.info@gmail.com)