



6/127 Park Road Rydalmere NSW

3  2  1 

Appealing Townhouse in the highly sought-after "Banksia Gardens" resort-style development. Offering a premium lifestyle across two expansive levels, this light-filled home is perfect for modern living and entertaining. The ground floor boasts separate, spacious lounge and dining areas that seamlessly open onto a beautifully paved rear courtyard, ideal for alfresco dining or simply relaxing.

Upstairs, you'll find generously sized bedrooms, each with built-in robes, while the master suite enjoys the added indulgence of a modern en-suite. The bathrooms are elegantly appointed, offering a blend of style and functionality, with a separate shower and bath for ultimate relaxation. The home is thoughtfully designed with features such as a third toilet and powder room downstairs,

Type : Townhouse
Building Size : 175 sqm
View : <https://www.luschwitz.com.au/8148054>

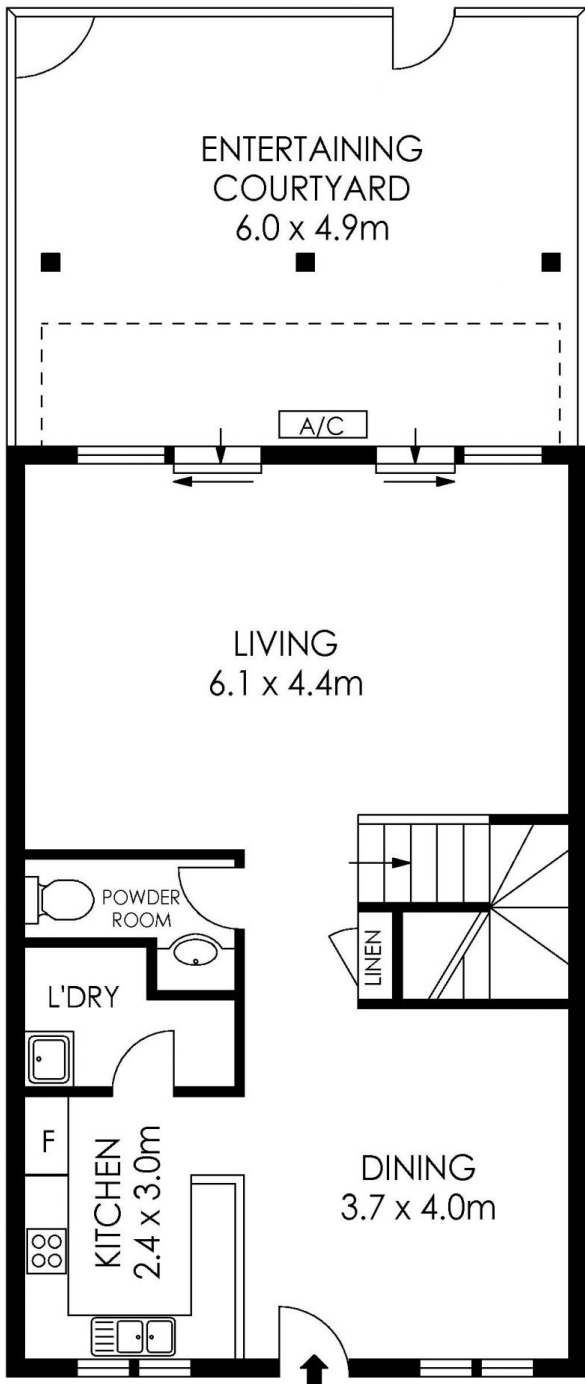


Josh Luschwitz
+612 9449 5511

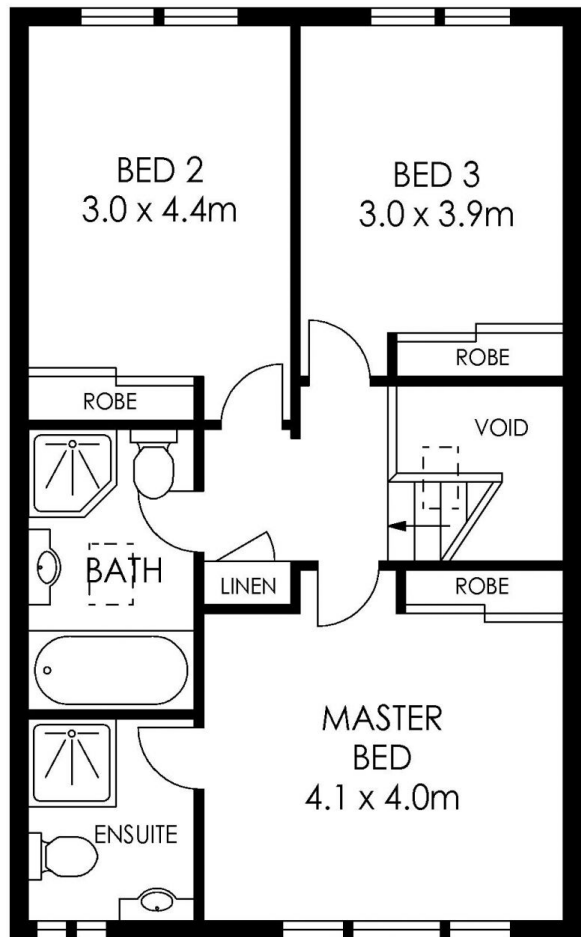


John Luschwitz
+612 9449 5511

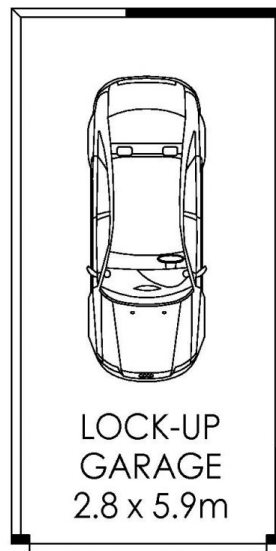
[For full version visit the website](#)



GROUND LEVEL



LEVEL ONE



BASEMENT LEVEL

APPROX. RESIDENCE AREA = 175 m²

PLANS SHOWN ONLY INDICATIVE OF LAYOUT. DIMENSIONS ARE APPROXIMATE.



Banksia Gardens 6/127 Park Road, Rydalmere



Luschwitz

© 2026 - Luschwitz Real Estate