



### 24 Woodlands Avenue Pymble NSW

4  1  2 

This picturesque, single level, full brick 1960's family home is the perfect opportunity for buyers looking to renovate, rebuild or downsize. On entry you are welcomed by a spacious foyer complete with high ceilings and original Jarrah timber flooring throughout. There are four generous bedrooms, three with built in robes plus excellent hallway storage and an external study/media room. The light filled, open plan living and dining room features a fireplace and picturesque bay window overlooking the level lawns and established gardens. The original kitchen and bathroom are in immaculate condition and reflect the character of this much loved home. The property is complemented by a double lock up garage with internal access, laundry and externally accessed toilet along with the added safety feature of an alarm system. With a 25M frontage, the block

**Type** : House  
**Land Size** : 983 sqm  
**View** : <https://www.luschwitz.com.au/8078716>

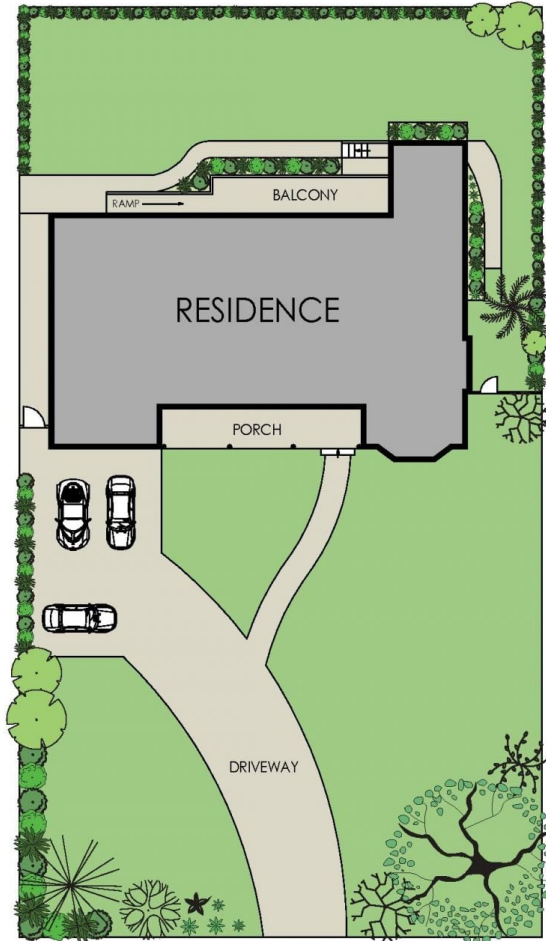


**Josh Luschwitz**  
 +612 9449 5511

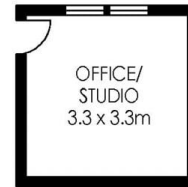


**Sue Hodges**  
 +612 9449 5511

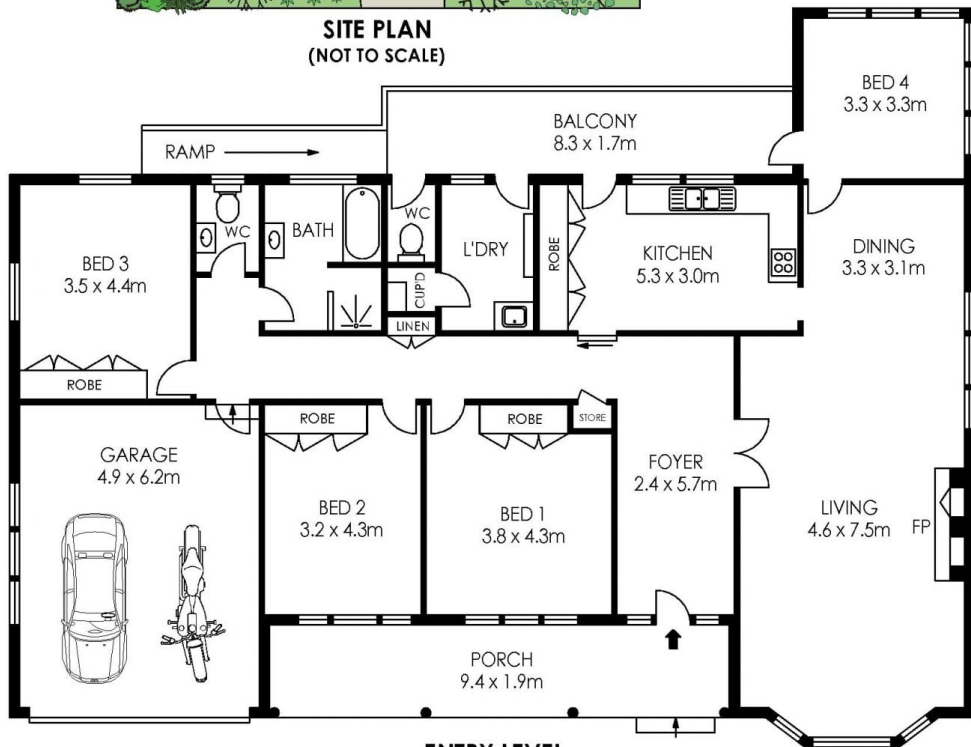
[For full version visit the website](#)



**SITE PLAN**  
(NOT TO SCALE)



**LOWER LEVEL**



**ENTRY LEVEL**

APPROX. RESIDENCE AREA = 212 m<sup>2</sup>



PLANS SHOWN ONLY INDICATIVE OF LAYOUT. DIMENSIONS ARE APPROXIMATE.

**24 Woodlands Avenue, Pymble**



**Luschwitz**

© 2026 - Luschwitz Real Estate