



### 5 Hume Avenue St Ives NSW

5 🏠 3 🚗 2 🚗

Built with exceptional craftsmanship, this impressive architect designed home showcases a spacious and flexible floor plan set on a wide fronted, level 930 m<sup>2</sup> block. With 5 generous bedrooms, plus a versatile study/6th bedroom, there is ample accommodation for an extended family or to work from home. Stylish formal and casual living spaces provide ample room for entertaining and flow to the covered alfresco dining, sun drenched lawn and private pool.

**Further features:**

- ? Luxurious, oversize primary bedroom with his and hers walk-in and ensuite
- ? Gourmet Kitchen with modern appliances and excellent storage

**Type** : House  
**Building Size** : 365 sqm  
**Land Size** : 930 sqm  
**View** : <https://www.luschwitz.com.au/7961644>

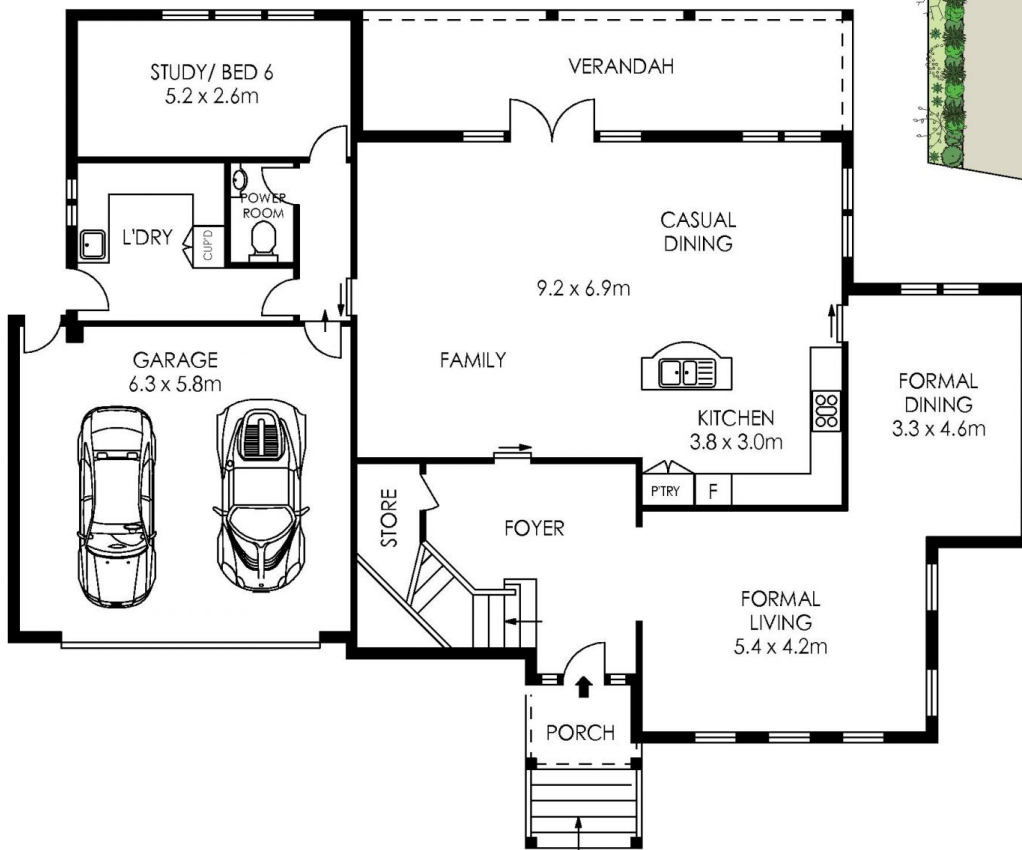
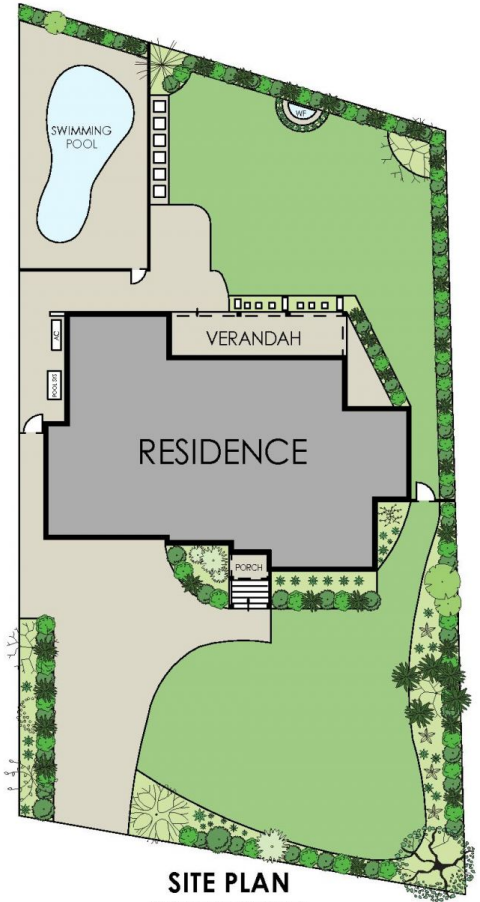
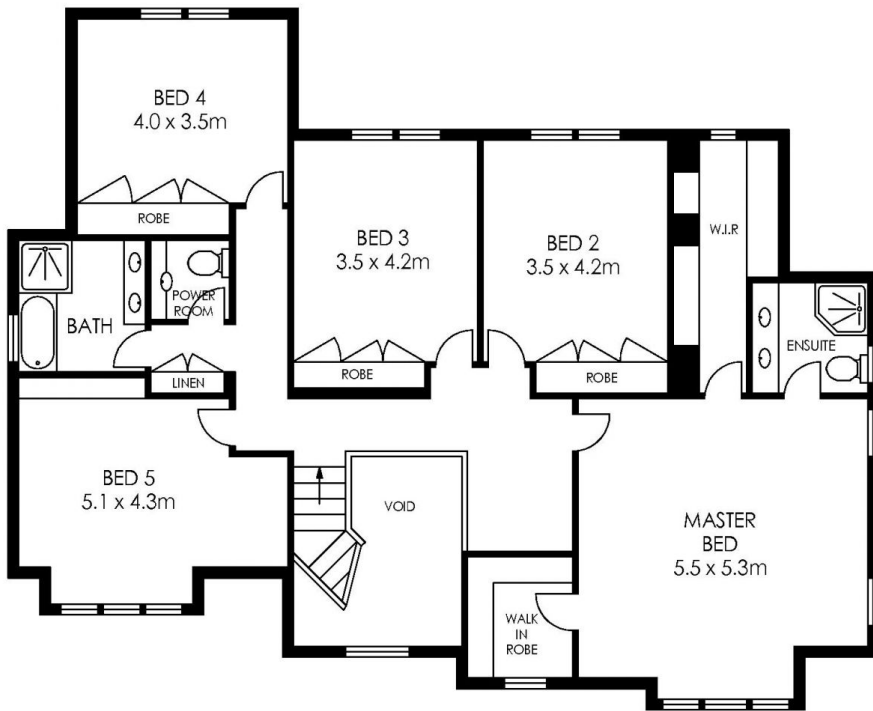


**Ceto Sandoval**  
 + 612 9449 5511



**John Luschwitz**  
 +612 9449 5511

[For full version visit the website](#)



APPROX. RESIDENCE AREA = 341 m<sup>2</sup>  
 APPROX. LAND SIZE = 959 m<sup>2</sup>

**GROUND LEVEL**



**5 Hume Avenue, St Ives**



**Luschwitz**

© 2026 - Luschwitz Real Estate