



23 Merrivale Road Pymble NSW

5  3  2 

Experience contemporary luxury in this modern 5 bedroom, 3 bathroom residence set in the heart of Pymble's prestigious East side. This approx. 7-year-old home offers a lifestyle of comfort and convenience with its spacious and flexible floor plan, perfect for the extended or growing family.

The grand layout includes generous casual living, family breakout space on the second floor and a separate media room, complemented by a covered alfresco area for seamless indoor-outdoor entertaining. The gourmet kitchen, complete with oversize island bench, gas cooking and a butler's pantry, overlooks the dining area and sunny deck.

Type : House
Land Size : 830 sqm
View : <https://www.luschwitz.com.au/7893949>

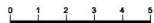
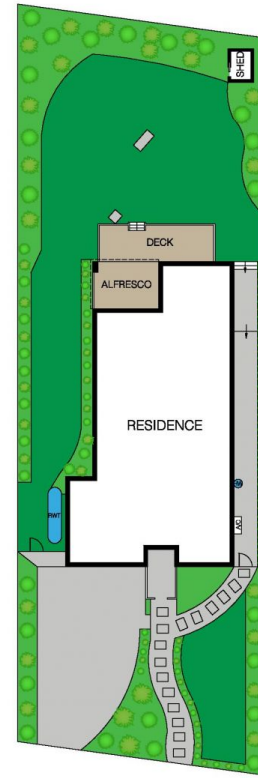
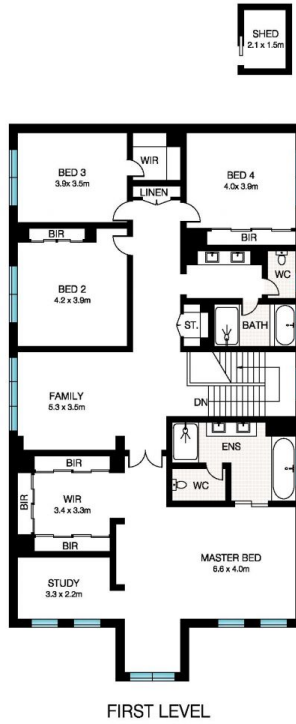
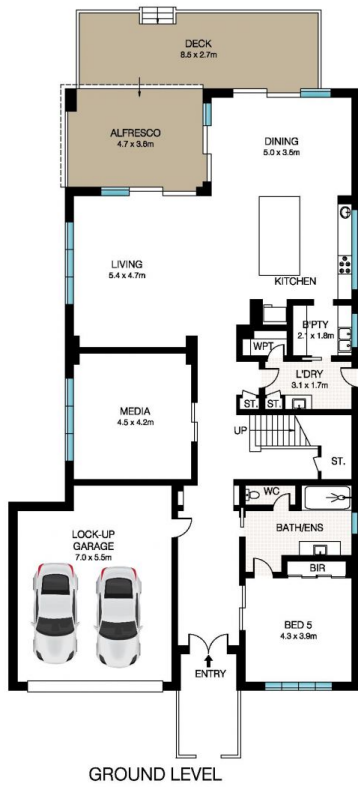


Josh Luschwitz
 +612 9449 5511



Leasing Team
 (02) 9449 5511

[For full version visit the website](#)



This Floor Plan was prepared by WWW.CRYPINGOUTLOUD.COM.AU for illustration purposes only. This document does not constitute any part of an offer or contract. Dimensions are approximate only. Copyright © 2024 Crying Out Loud. All Rights Reserved.

23 merrivale Road, Pymble

INT: 373m²
EXT: 40m²

