



63 Stanhope Road Killara NSW

5 🛏 3 🚿 2 🚗

Classic 1967-built high gable English Style 2-storey residence located in the prestigious east side of Killara. Arguably one of Killara's best addresses nestled amidst some of the North Shore's finest properties. Much-loved family home is a golden opportunity to transform and add value. Step into rooms bathed in natural light, thanks to the floor-to-ceiling bay windows in both the grand lounge and banquet-sized dining rooms. The spacious layout offers 5 to 6 bedrooms, three bathrooms, and the ideal framework for your dream home.

An efficiently designed kitchen adjoins a casual dining space, perfect for everyday meals, and overlooks the established private gardens. With a little creativity and modernization, you can turn this space into a culinary

Type : House
Building Size : 302 sqm
Land Size : 835 sqm
View : <https://www.luschwitz.com.au/7797603>

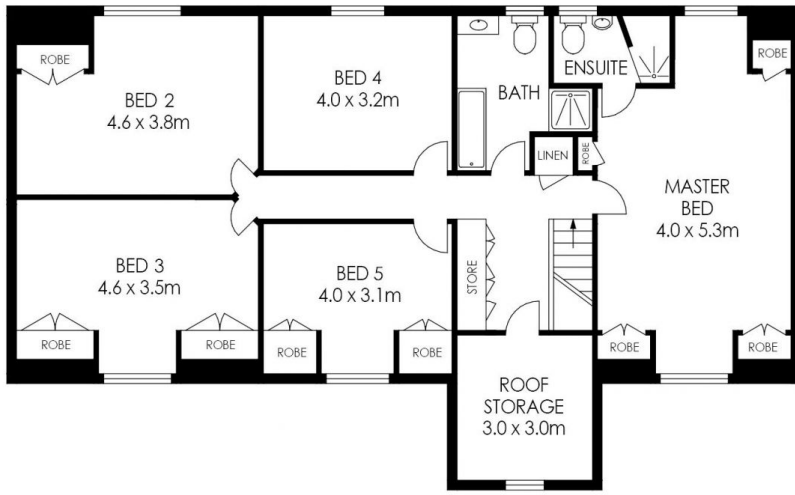


Josh Luschwitz
 +612 9449 5511

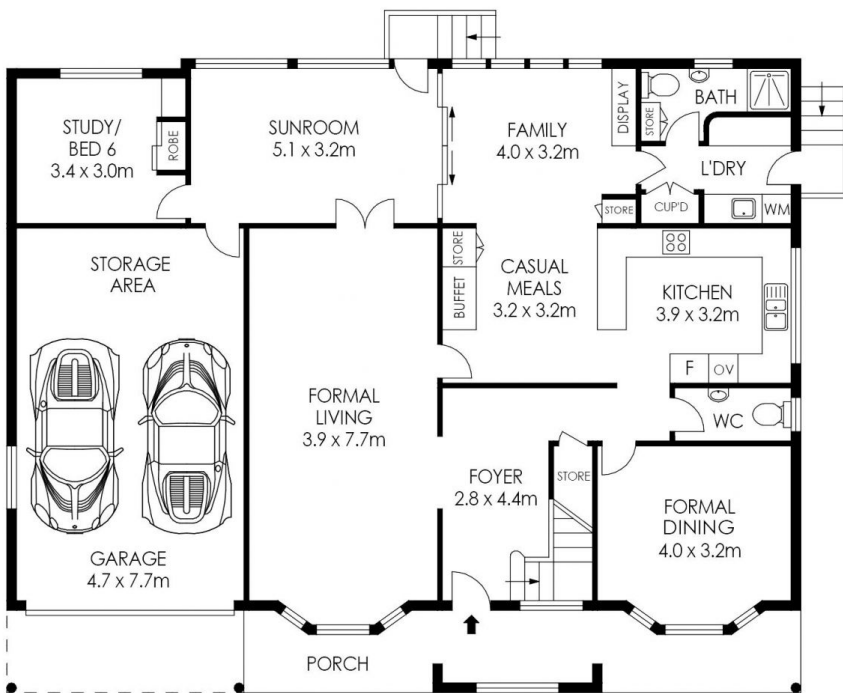


John Luschwitz
 +612 9449 5511

[For full version visit the website](#)



FIRST FLOOR



GROUND FLOOR



SITE PLAN
(NOT TO SCALE)

APPROX. RESIDENCE AREA = 302 m²

APPROX. LAND SIZE = 835 m²

PLANS SHOWN ONLY INDICATIVE OF LAYOUT. DIMENSIONS ARE APPROXIMATE.



63 Stanhope Road, Killara



Luschwitz
REAL ESTATE