



8 Roslyn Avenue Roseville NSW

5 🛏 5 🚿 2 🚗

c1909 enchanting Federation Residence has been completely restored to its original grandeur a symphony of classic charm and contemporary elegance. Nestled on a sprawling 1,393m² private estate, "Yarrowonga" is an emblem of architectural magnificence. Just a short stroll from Roseville Shops and Station, it offers the perfect blend of tranquillity and convenience.

From the moment you cross the threshold, you'll be captivated by the meticulous attention to detail. High ornate ceilings, enchanting leadlight windows, and gleaming timber floors transport you to a bygone era. The open fireplaces and wide verandah invite you to savor moments of warmth and relaxation.

Type : House
Building Size : 521 sqm
Land Size : 1393 sqm
View : <https://www.luschwitz.com.au/7763206>

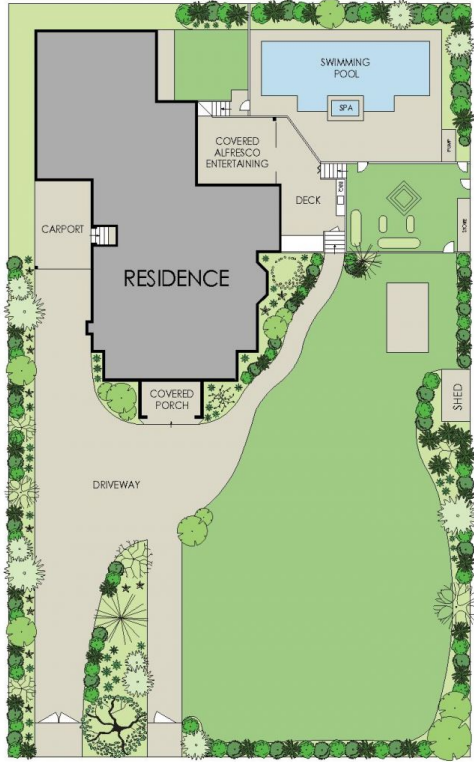


Josh Luschwitz
 +612 9449 5511

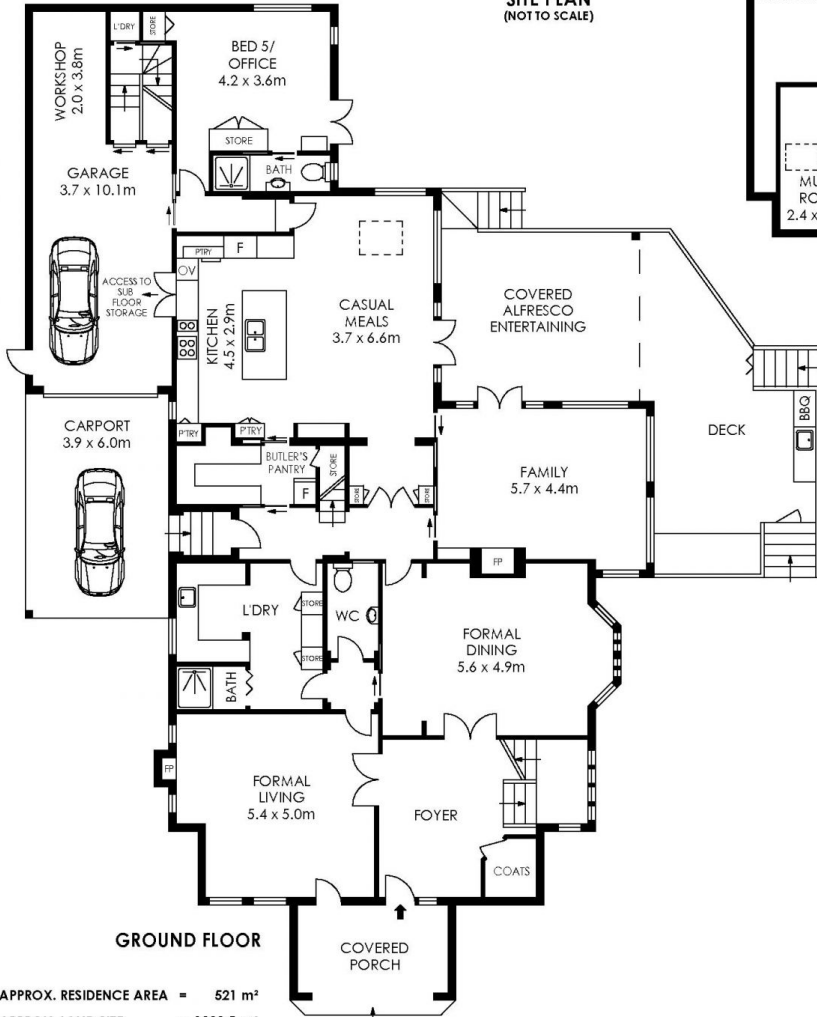


John Luschwitz
 +612 9449 5511

[For full version visit the website](#)



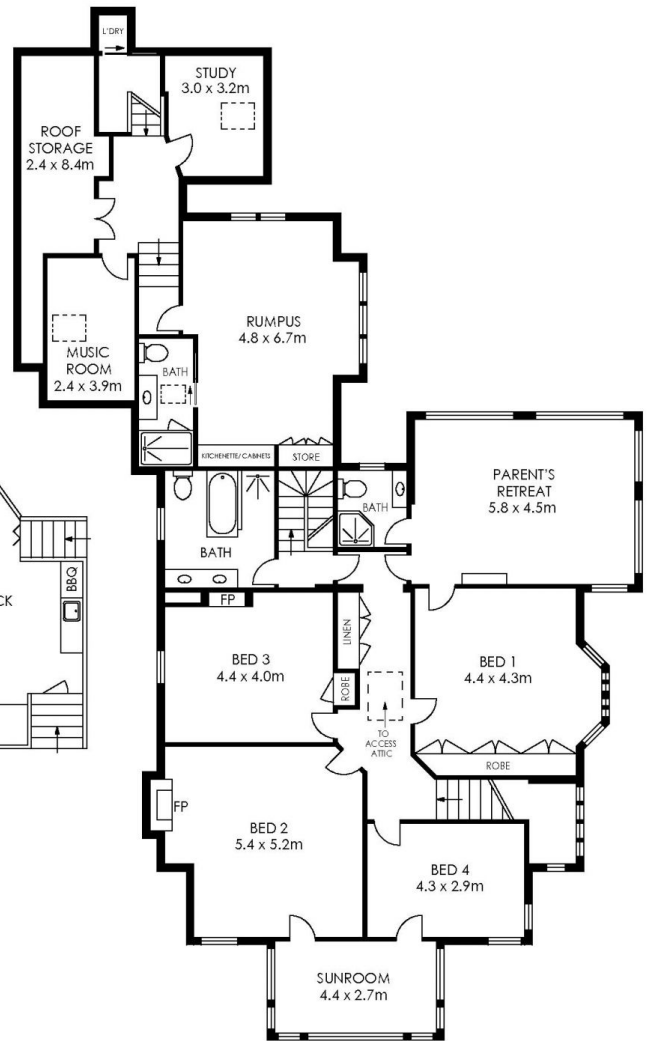
SITE PLAN
(NOT TO SCALE)



GROUND FLOOR

APPROX. RESIDENCE AREA = 521 m²
 APPROX. LAND SIZE = 1393.5 m²

PLANS SHOWN ONLY INDICATIVE OF LAYOUT. DIMENSIONS ARE APPROXIMATE.



FIRST FLOOR



'Yarrowonga'



Luschwitz