



19 Valley Park Crescent Turramurra NSW

5 🛏 2 🚗 2 🚗

Discover the serenity of this award-winning architect-designed split-level clinker brick Contemporary residence nestled in a tranquil bushland setting that backs onto the stunning Ku-ring-gai Chase National Park and Lovers Jump Creek. This much-loved 1980s home is a rare gem that offers a unique living experience just steps away from shops, schools and transport.

This home's full brick/concrete slab construction and unique design make it a perfect candidate for a renovation project. The soaring cathedral ceilings create a sense of grandeur and elegance that is sure to impress. The spacious, light-filled living areas with a log fireplace provide the perfect canvas for your renovation ideas. With ample bench space and storage, the kitchen is a chef's dream

Type : House
Land Size : 1139 sqm
View : <https://www.luschwitz.com.au/7609132>

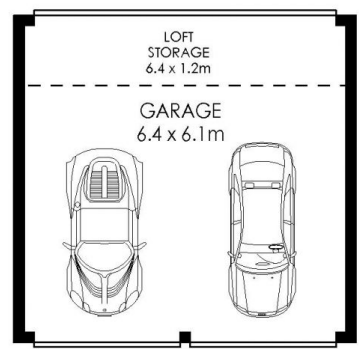
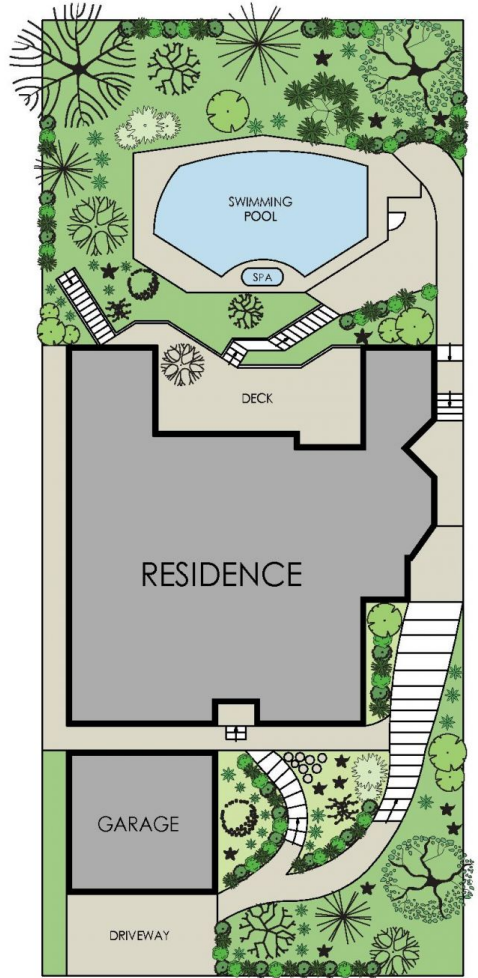
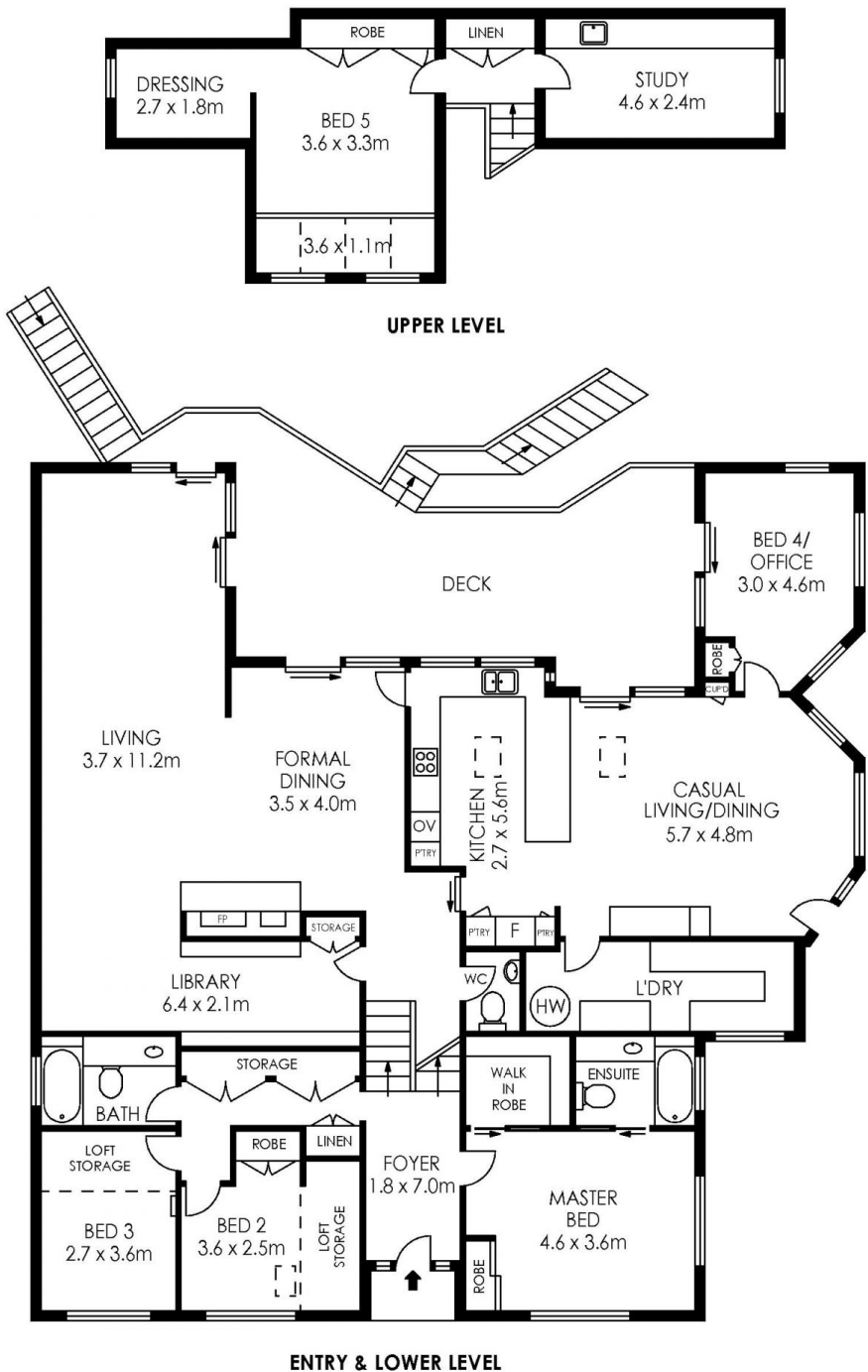


John Luschwitz
 +612 9449 5511



Josh Luschwitz
 +612 9449 5511

[For full version visit the website](#)



APPROX. RESIDENCE AREA = 300 m²
 APPROX. LAND SIZE = 1139 m²



PLANS SHOWN ONLY INDICATIVE OF LAYOUT. DIMENSIONS ARE APPROXIMATE.

19 Valley Park Crescent, North Turrumurra



Luschwitz

© 2026 - Luschwitz Real Estate