



6 Stratford Place St Ives NSW

5 🛏 3 🚿 2 🚗

This idyllic property in St Ives offers the perfect retreat from the hustle and bustle of everyday life. Nestled in a secluded cul-de-sac, this light-filled sanctuary will instantly transport you to a place of peace and tranquility. The residence enjoys an uninterrupted view of the beautiful bushland, providing a serene backdrop to your everyday living.

The home consists of five generously sized bedrooms, including a master suite with its own ensuite and walk-in robe. The open-planned lounge and dining area offer ample space for family gatherings, while the large, modern kitchen is equipped with top-of-the-range stainless steel appliances and a convenient island bar. Additionally, the house has an adjoining internal laundry, making household chores easier.

Type : House

View : <https://www.luschwitz.com.au/7600703>

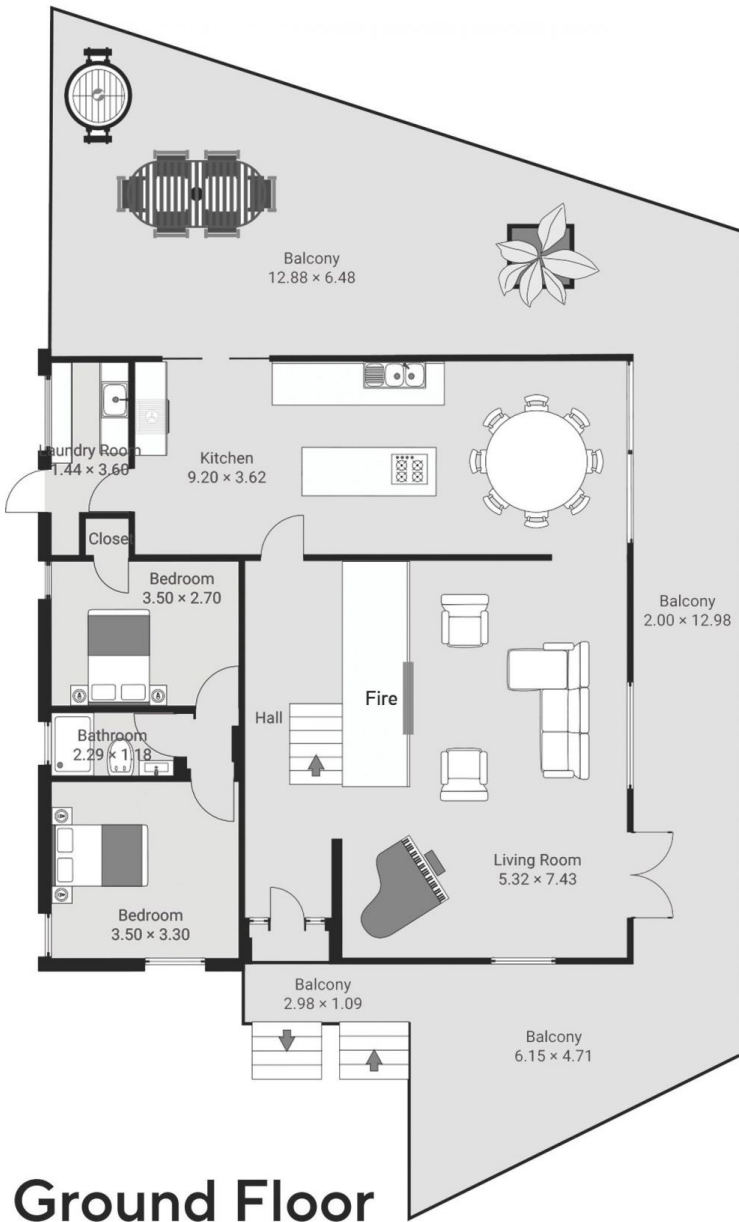


Josh Luschwitz
 +612 9449 5511

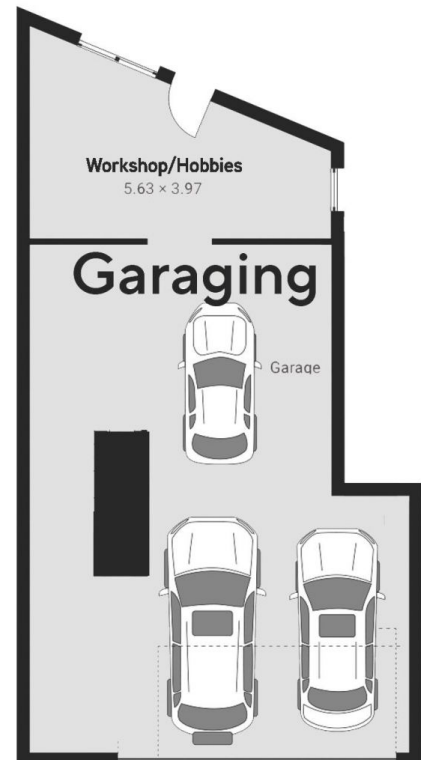


Leasing Team
 (02) 9449 5511

[For full version visit the website](#)



First Floor



Luschwitz
REAL ESTATE

Plans are intended as a guide only. No representations or warranties of any nature whatsoever are given or intended and any person using this information should always rely on their own enquiries.