



2/692 Pacific Highway Killara NSW

1  1  1 

Experience tranquility and comfort in this whisper-quiet apartment tucked away at the rear of 'Glenburn Gardens'. Situated conveniently behind Beacon Lighting Shop, opposite the Greengate Hotel, this full brick unit offers a light-filled and modern living space, ensuring a relaxed and convenient lifestyle.

FEATURE HIGHLIGHTS

- * Open Plan Living: Enjoy the spacious open plan living and dining area, perfect for entertaining or simply unwinding after a long day.
- * Modern Finishes: The unit features floating floors throughout, creating a contemporary and stylish atmosphere.
- * Bright Bedroom: Retreat to a generous bedroom with

Type : Unit
View : <https://www.luschwitz.com.au/7583824>

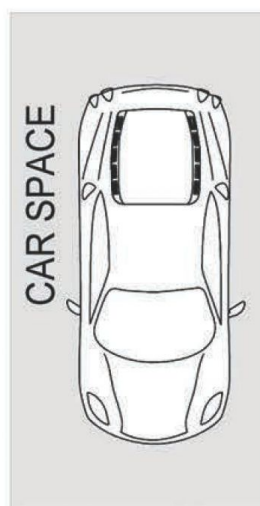
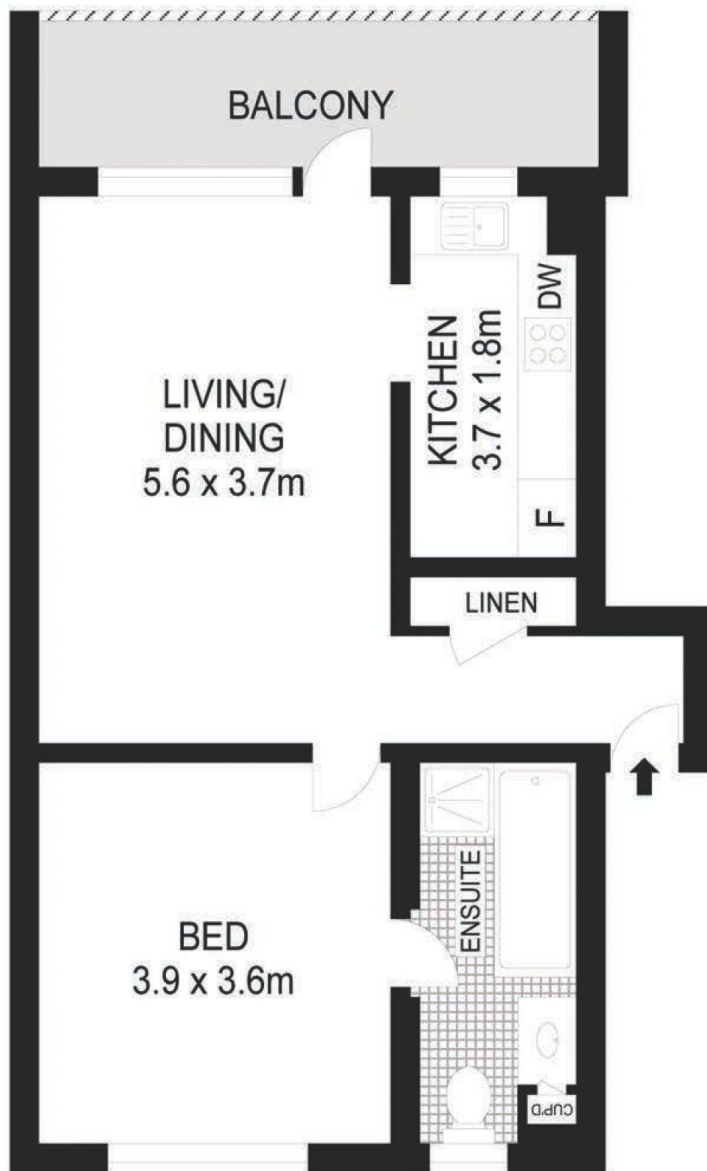


Josh Luschwitz
+612 9449 5511



Leasing Team
(02) 9449 5511

[For full version visit the website](#)



The apartment: 78m² approx



Luschwitz
REAL ESTATE

Plans are intended as a guide only. No representations or warranties of any nature whatsoever are given or intended and any person using this information should always rely on their own enquiries.