



2/564 Pacific Highway Killara NSW

2  1  1 

Premium Location. Adjoins the prestigious Killara Golf Course, and just a short walk away from Killara station and the shops. Also within the catchment area for highly regarded Killara Public and High schools.

Two light-filled bedrooms with built-in wardrobes and a generous lounge and dining area. There's plenty of space for relaxation, entertainment, and comfortable living. Step into a stylish brand new designer kitchen with high-quality finishes, sleek cabinetry, and top-of-the-line appliances. The apartment features a modern bathroom with an adjoining powder room, providing added functionality and ease of use.

The spacious private roof terrace offers a perfect setting for

[For full version visit the website](#)

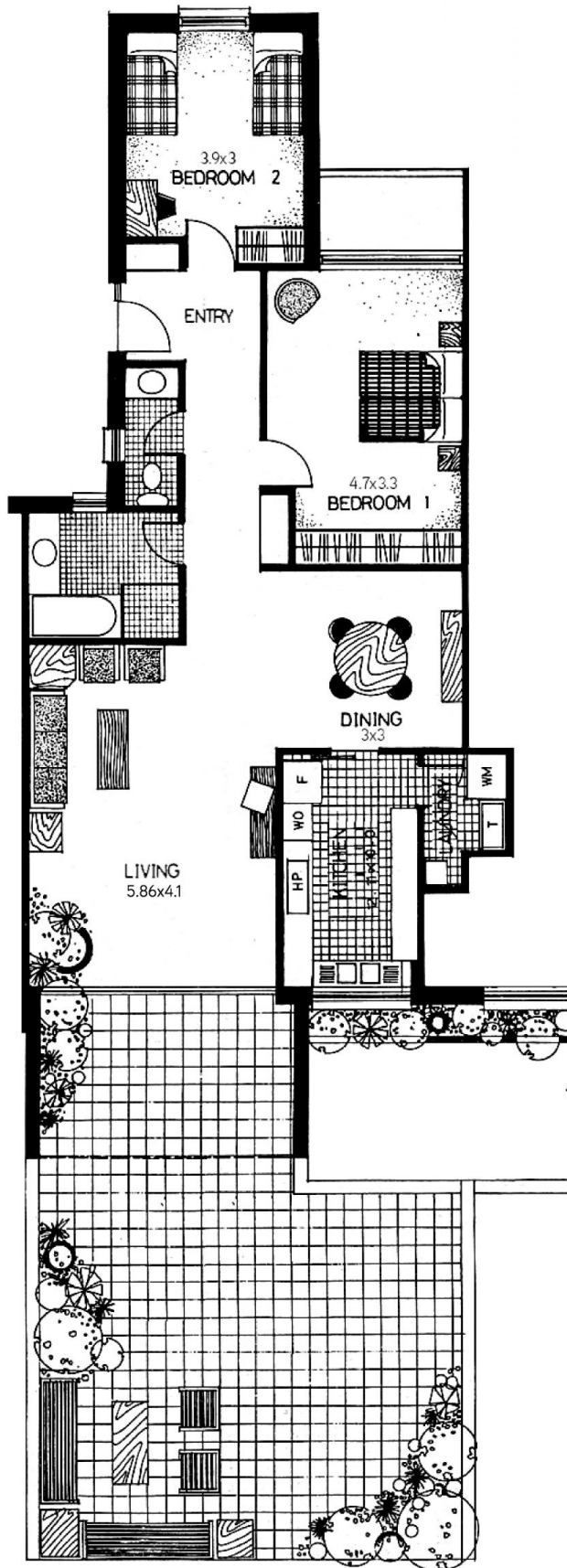
Type : Apartment
Building Size : 170 sqm
View : <https://www.luschwitz.com.au/7572545>



Josh Luschwitz
+612 9449 5511



Leasing Team
(02) 9449 5511



Apartment: approx 170m2



Luschwitz
REAL ESTATE

Plans are intended as a guide only. No representations or warranties of any nature whatsoever are given or intended and any person using this information should always rely on their own enquiries.