



6/18 Marian Street Killara NSW

3  1  2 

Just moments to Killara Train Station with a local cafe across the road, this light filled apartment enjoys the north sun.

The Accommodation:

- 3 double bedrooms (built-ins)
- Generous combined lounge/dining area opening to balcony
- Designer quality kitchen fitted with stainless steel appliances.
- Glamorous bathroom with separate toilet
- Reverse cycle air conditioning
- Double garage plus storage
- Walk to Killara Train Station
- In the Killara High School catchment area

Type : Apartment
Building Size : 125 sqm
Land Size : 2981 sqm
View : <https://www.luschwitz.com.au/7525553>

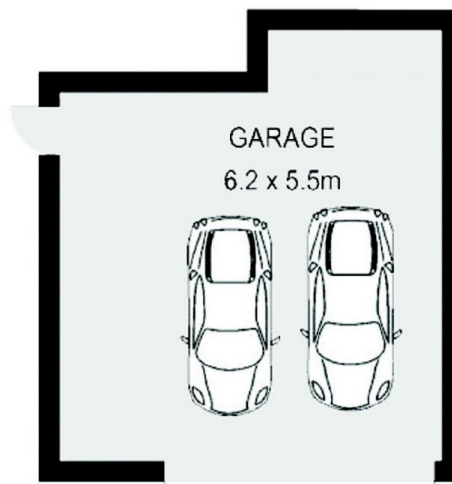
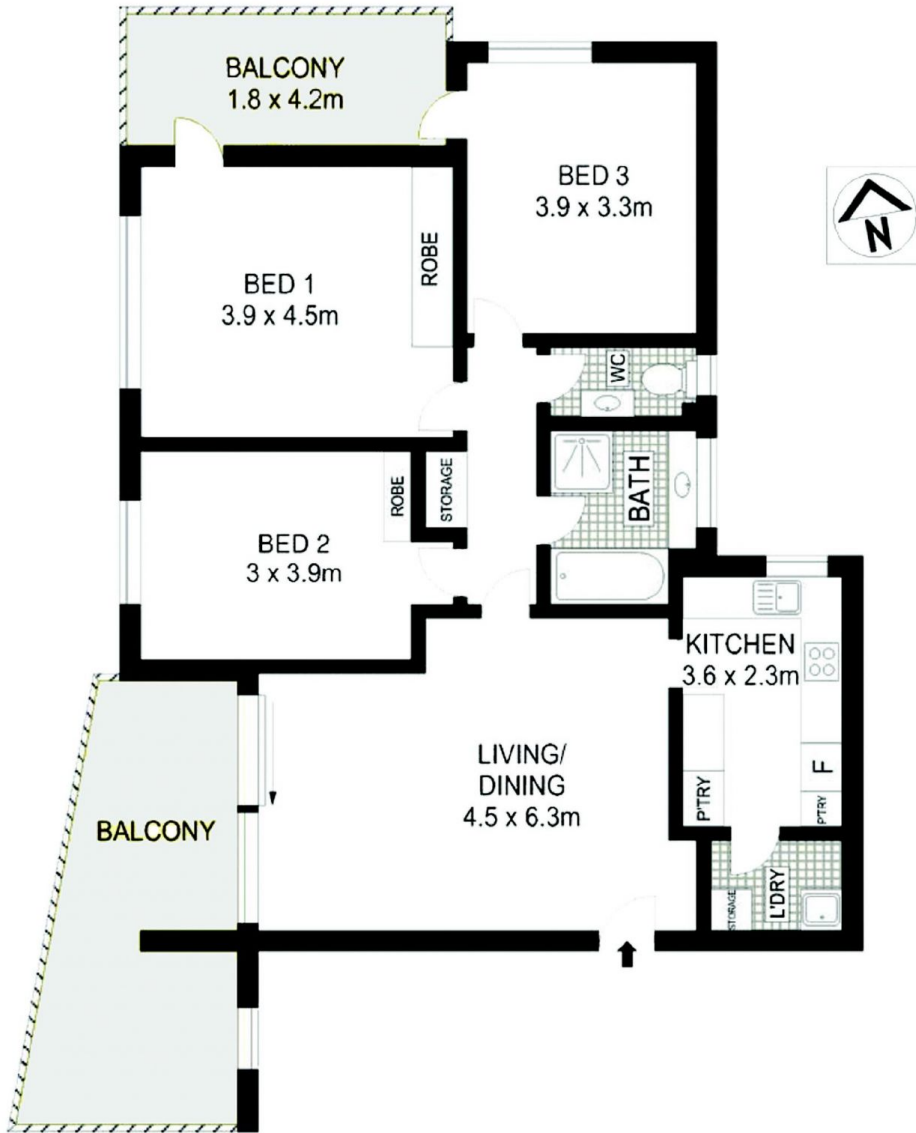


Josh Luschwitz
+612 9449 5511



Leasing Team
(02) 9449 5511

[For full version visit the website](#)



Residence: 125m²
 Land: 2981m²



Luschwitz
 REAL ESTATE

Plans are intended as a guide only. No representations or warranties of any nature whatsoever are given or intended and any person using this information should always rely on their own enquiries.

“Wychwood” Apartment 6/18 Marian Street, Killara