



11 Halcyon Avenue Wahroonga NSW

4  2  2 

This beautiful Californian bungalow offers an exquisite living experience in a highly convenient location. Step into the timeless elegance with its single-story layout and craftsman details that exude character and style. Enjoy the open floor plan, providing ample space for comfortable living and entertaining. This home boasts four generously sized bedrooms, ensuring plenty of room for family, guests, or a home office. With two well-appointed bathrooms, convenience and privacy are never compromised. Outdoor Oasis: Dive into the inviting swimming pool, offering a refreshing escape on hot summer days and a perfect spot for relaxation and rejuvenation. Embrace the ultimate convenience with shops and the train station just a short stroll away, making errands and commuting a breeze. Proximity to Schools: Families will appreciate the close

Type : House
Building Size : 250 sqm
Land Size : 1135 sqm
View : <https://www.luschwitz.com.au/7423804>

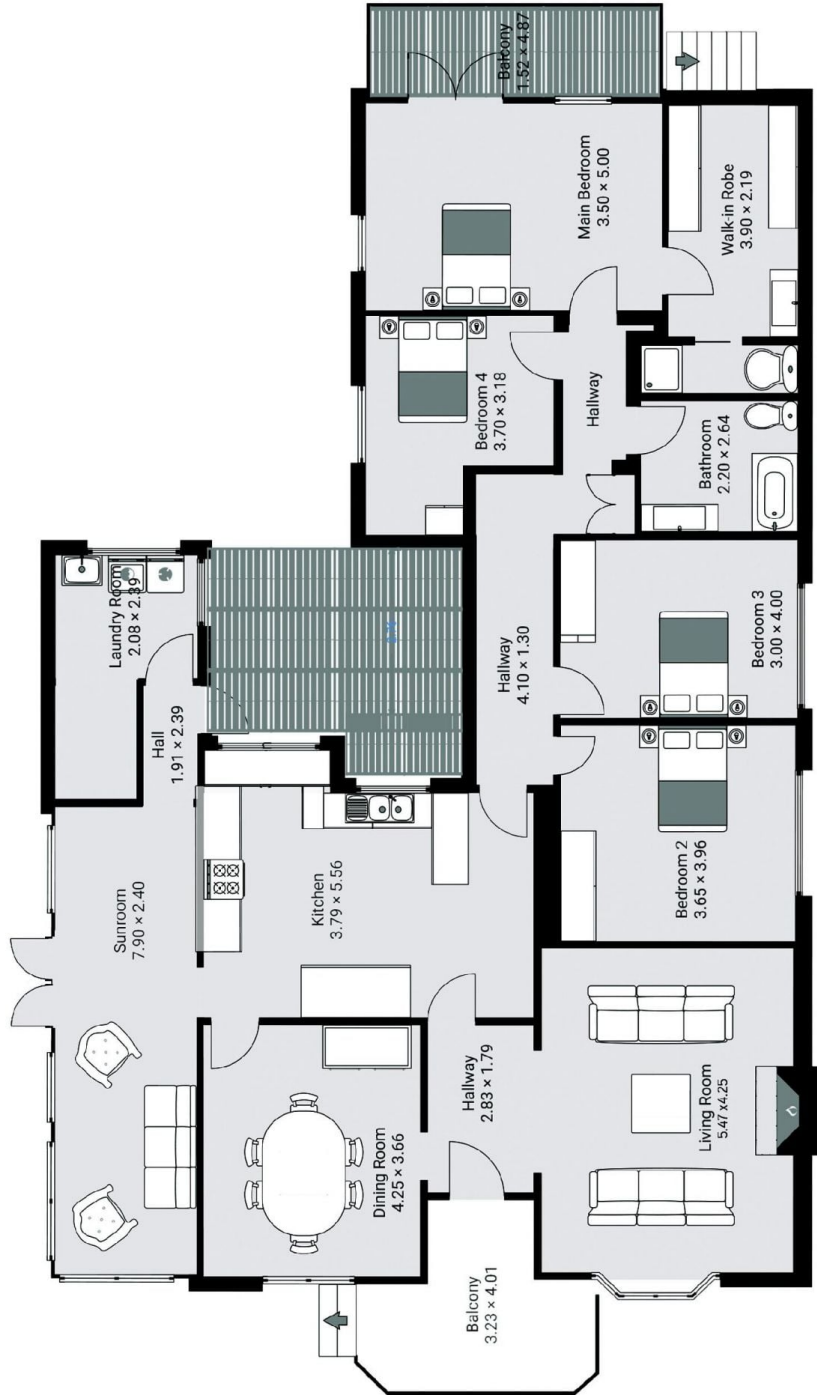
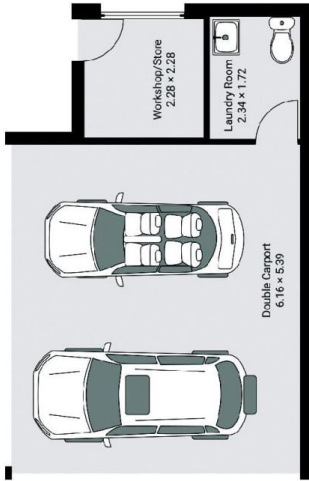


Josh Luschwitz
 +612 9449 5511



Leasing Team
 (02) 9449 5511

[For full version visit the website](#)



APPROX. RESIDENCE AREA = 250 m²

APPROX. LAND SIZE = 1135 m²

PLANS SHOWN ONLY INDICATIVE OF LAYOUT. DIMENSIONS ARE APPROXIMATE.

11 Halcyon Avenue, Wahroonga



Luschwitz
REAL ESTATE