



### 16 Latona Street Pymble NSW

5  3  2 

This stunning, designer residence is nestled on a superb, private and level garden block at the end of a tightly held cul-de-sac.

You will be immediately impressed by the wide central hallway, with selected ceramic tiled floor, leading to the vast, open plan living space with soaring double height ceilings and perfect flow to the alfresco entertaining and sparkling swimming pool. The home features a generous and flexible floor plan offering ample space for the modern family to entertain and enjoy.

- Features include:
- Five bedrooms
  - Three bathrooms

[For full version visit the website](#)

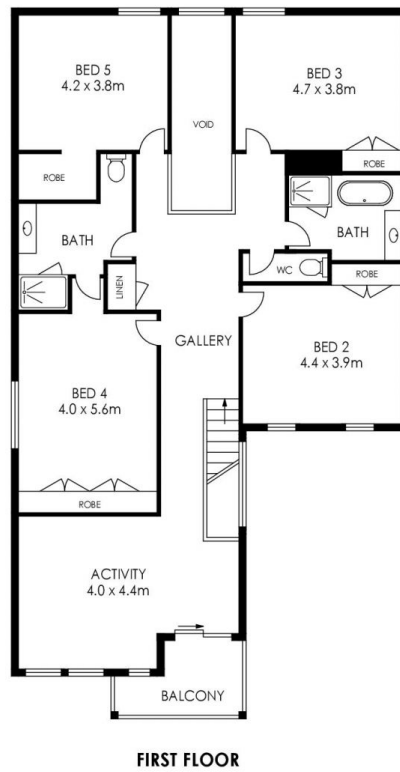
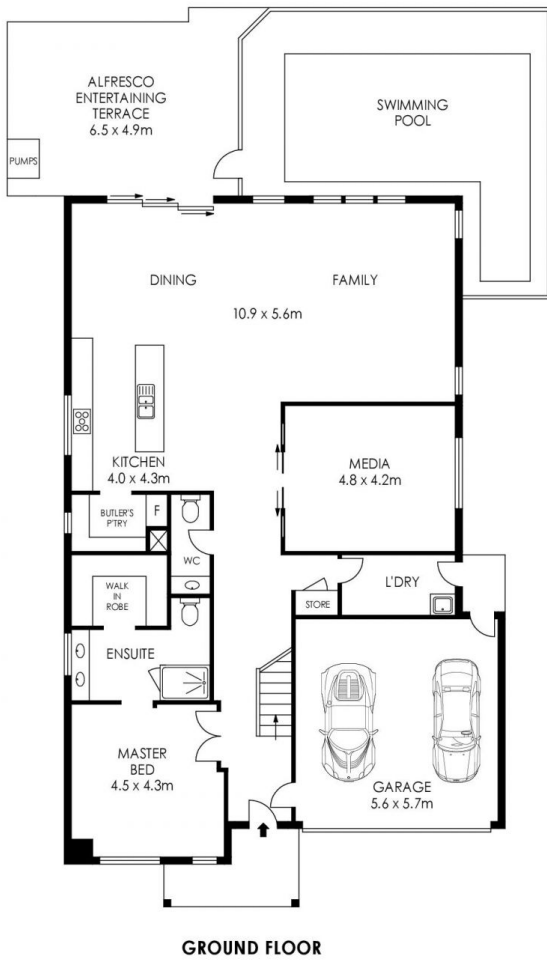
**Type** : House  
**View** : <https://www.luschwitz.com.au/7302980>



**Josh Luschwitz**  
**+612 9449 5511**



**Leasing Team**  
**(02) 9449 5511**



**RESIDENCE** = 392 m<sup>2</sup>  
**LAND SIZE** = 1170 m<sup>2</sup>

PLANS SHOWN ONLY INDICATIVE OF LAYOUT. DIMENSIONS ARE APPROXIMATE.

