



10/560-562 Pacific Highway Killara NSW

2  2  1 

Tucked away to the rear of the highly sought-after 'Cavendish', this top quality Mirvac building adjoins the prestigious Killara Golf Course. The apartment features 2 spacious bedrooms, 2 bathrooms, open plan living and excellent flow to 2 sunny balconies. A tranquil and private offering ideally positioned central to rail, buses, shops, golf course, and parks.

Features include:

- Expansive, light & airy living & dining room with seamless indoor/outdoor flow
- Covered private balconies ideal for entertaining
- Stylish modern kitchen with quality appliances
- Spacious Master with built-ins, en-suite and adjoining balcony

Type : Unit
Building Size : 160 sqm
View : <https://www.luschwitz.com.au/7183484>

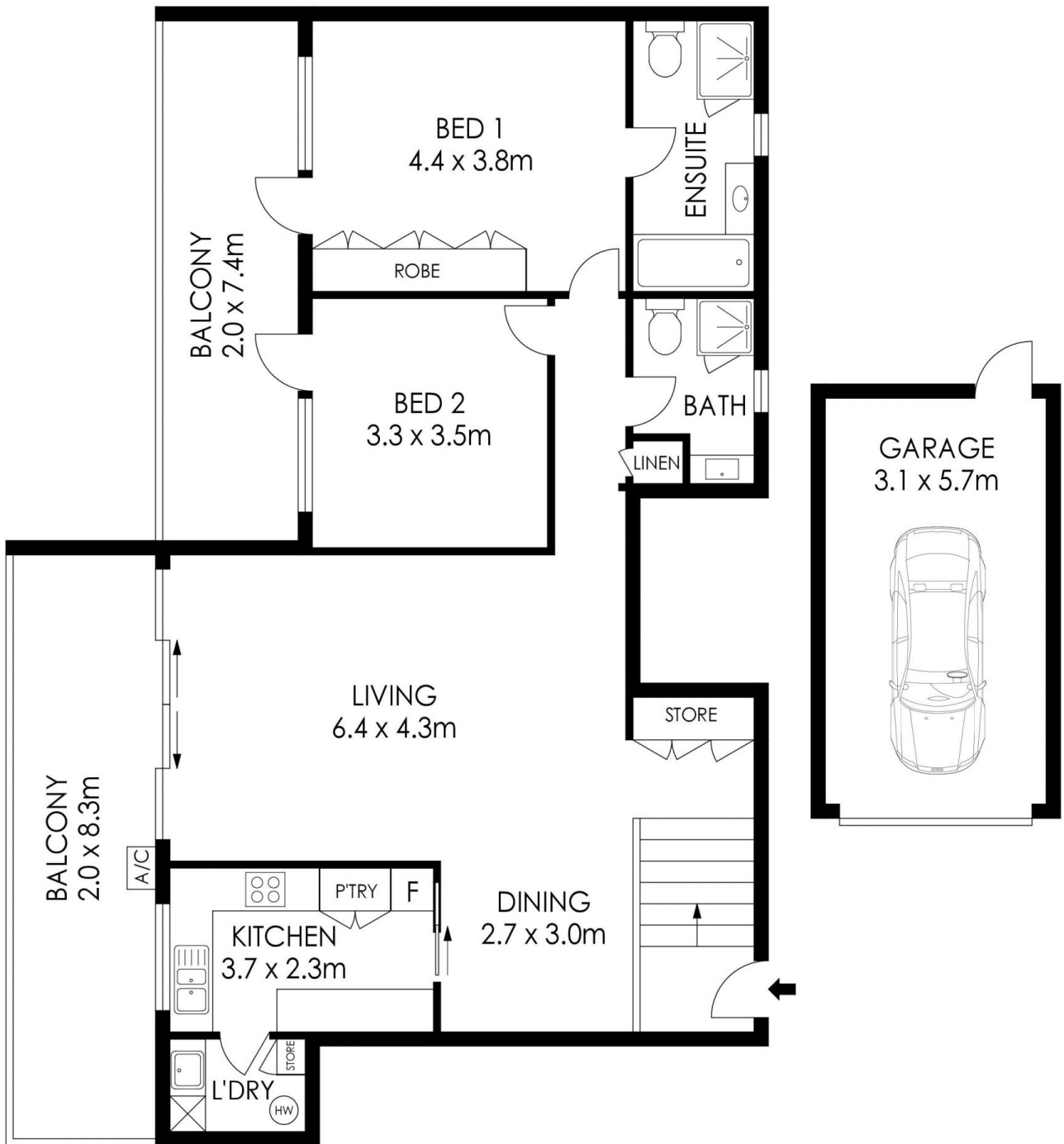


John Luschwitz
+612 9449 5511



Josh Luschwitz
+612 9449 5511

[For full version visit the website](#)



APPROX. RESIDENCE AREA = 160 m²



PLANS SHOWN ONLY INDICATIVE OF LAYOUT. DIMENSIONS ARE APPROXIMATE.

10/560-562 Pacific Hwy. Killara



Luschwitz

© 2026 - Luschwitz Real Estate