



**2/1A Koola Avenue Killara NSW**

3  2  2 

Stunning spacious LUXURY VILLA designed for over 55's. Ideal for "Downsizers" looking for space, quality and a luxurious lifestyle. Perfect rear-to-north aspect with your own pretty private garden. Timeless architecture and quality built full brick construction featuring soaring double height ceilings, vast entry vestibule, a generous floor plan and a multi-purpose attic loft retreat. Impeccably presented. You'll love the sun drenched setting that is just a few steps to Killara Park and bus services and within walking distance of the station. In the Killara School catchment area

**Type** : Villa  
**Building Size** : 190 sqm  
**Land Size** : 396 sqm  
**View** : <https://www.luschwitz.com.au/7160787>

**THE ACCOMMODATION**

- \* Quality full brick construction, plantation shutters
- \* Completely level street access, seamless indoor/outdoor living

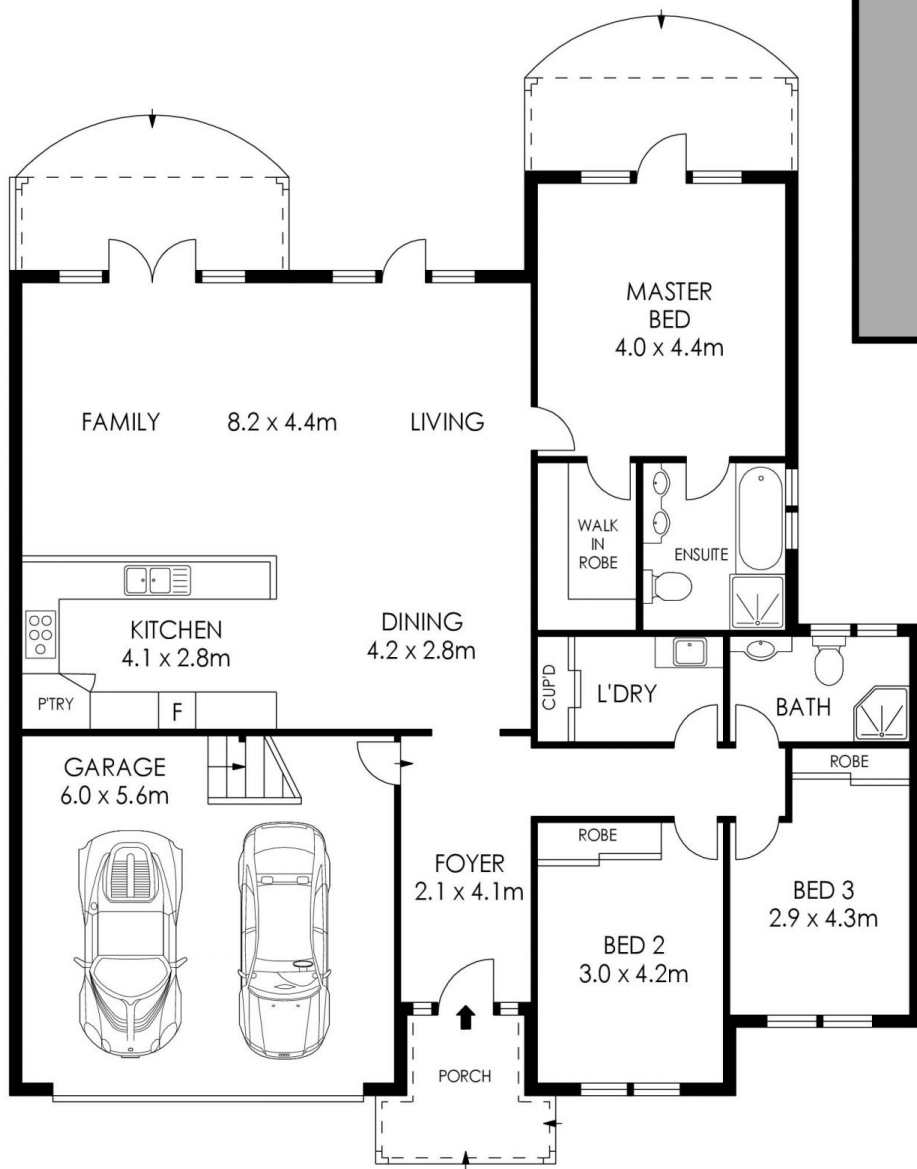


**John Luschwitz**  
 +612 9449 5511

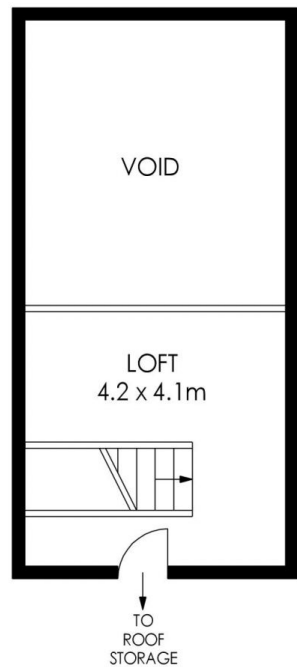


**Josh Luschwitz**  
 +612 9449 5511

[For full version visit the website](#)



**SITE PLAN  
(NOT TO SCALE)**



APPROX. RESIDENCE AREA = 190 m<sup>2</sup>  
 APPROX. LAND SIZE = 396 m<sup>2</sup>



PLANS SHOWN ONLY INDICATIVE OF LAYOUT. DIMENSIONS ARE APPROXIMATE.

**2/1A Koola Avenue, East Killara**



**Luschwitz**

© 2026 - Luschwitz Real Estate