



201/19 Grosvenor Street Neutral Bay NSW

3  2  2 

This peaceful and private sanctuary rests within the cosmopolitan hub of Grosvenor Street enjoying a host of award-winning eateries at the doorstep. Set up perfectly for the professional couple with a fit out study/home office (high speed internet/FTTB Fibre available) and spare guest room. In very high demand, this apartment also features two large (side by side) car spaces with 2 storage cages set behind and another 2 nearby.

The accommodation includes a large primary king size bedroom with his and hers wardrobes and ensuite bathroom. An additional 2 double bedrooms (one converted into a study / home office), internal laundry, huge gourmet kitchen with top of the range 'Miele' appliance package plus an expansive dining and living room that flows seamlessly

Type : Apartment
Building Size : 184 sqm
View : <https://www.luschwitz.com.au/7035192>

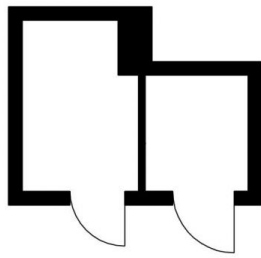


Josh Luschwitz
 +612 9449 5511

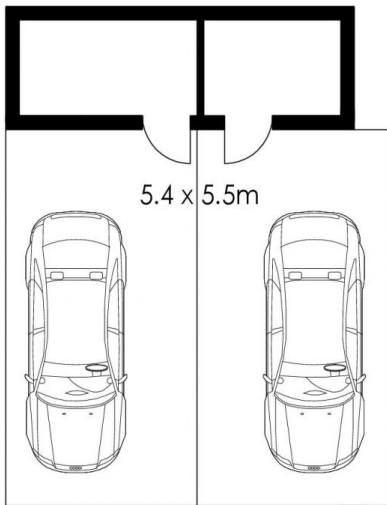


Sue Hodges
 +612 9449 5511

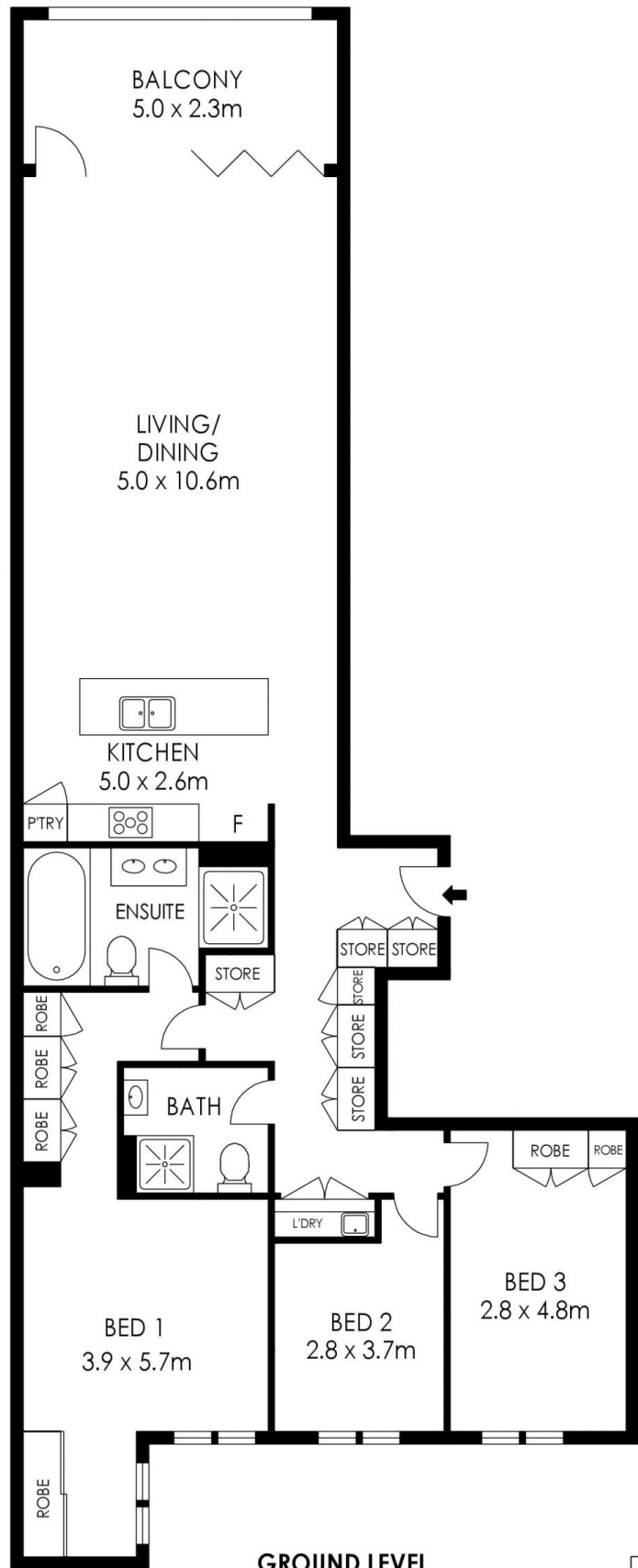
[For full version visit the website](#)



LOCK-UP STORAGE



SECURE CAR SPACES



GROUND LEVEL

APPROX. INTERNAL AREA = 130 m²
 APPROX. EXTERNAL AREA = 26 m²
 TOTAL = 156 m²

PLANS SHOWN ONLY INDICATIVE OF LAYOUT. DIMENSIONS ARE APPROXIMATE.



201/19 Grosvenor Street, Neutral Bay



Luschwitz

© 2026 - Luschwitz Real Estate