



23 King Edward Street Pymble NSW

5 🏠 4 🚗 2 🚘

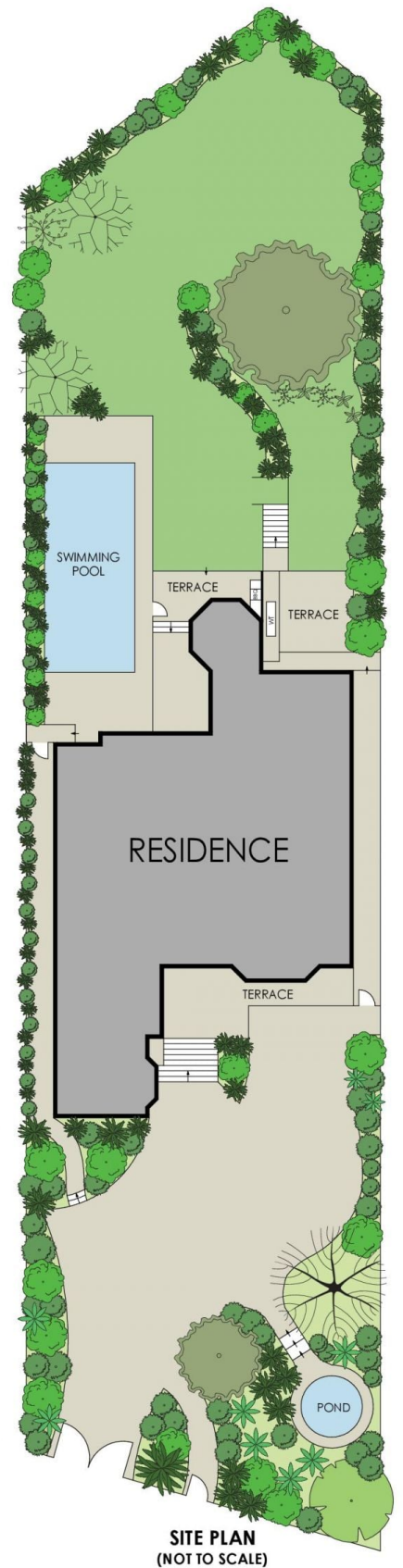
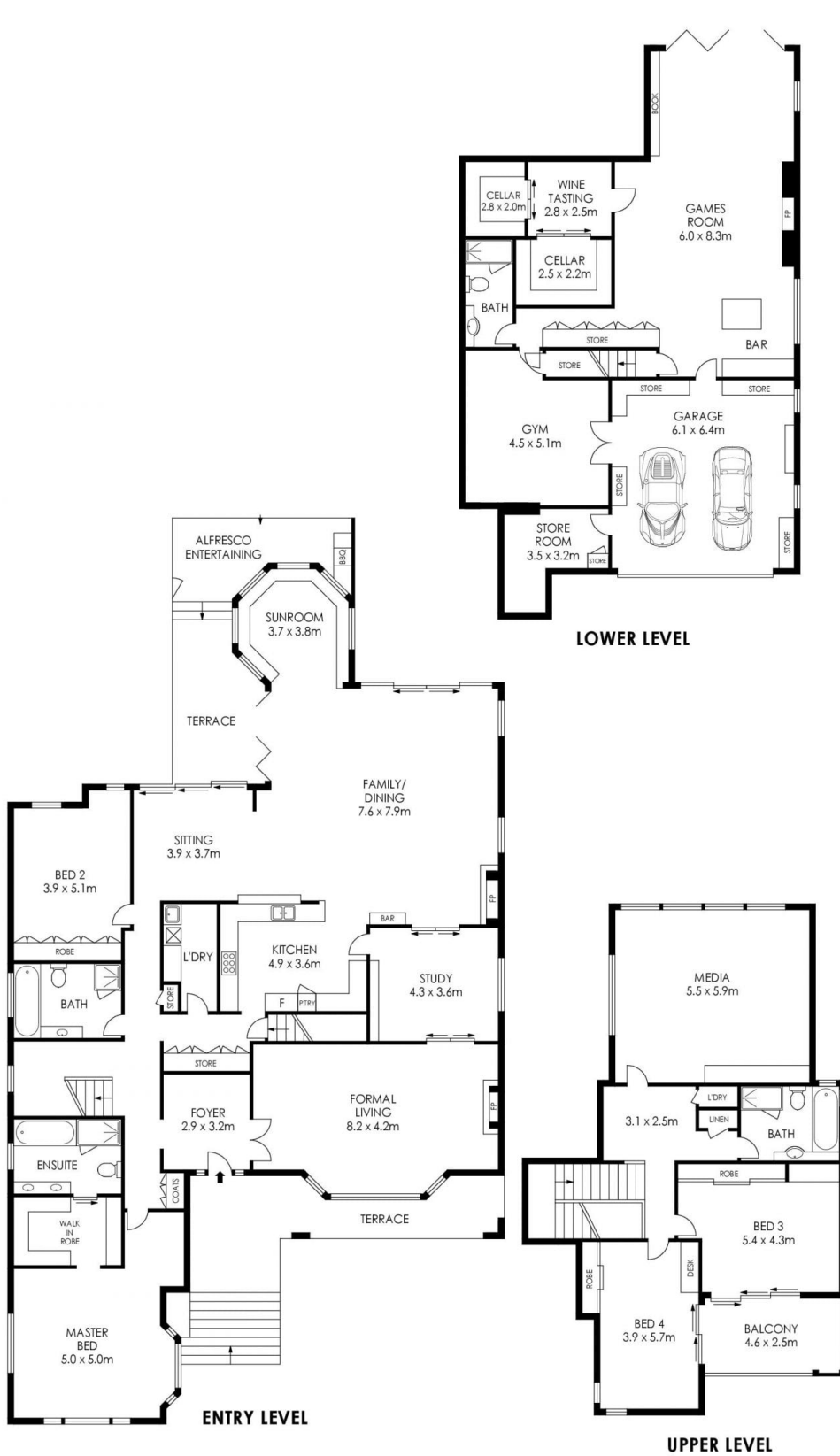
One of the finest homes to be offered to the Pymble market in years. A family home without equal nestled on a tranquil 1700sqm of stunning manicured and private landscaped gardens. Finished to absolute perfection this home offers the entertainer wonderful and expansive living spaces effortlessly leading to the sparkling fully tiled pool and exquisite gardens. Formal lounge and dining rooms, massive kitchen, family and living rooms, 2 x rumpus rooms, 1700 bottle cellar and so much more. Easy walk to PYMBLE station, local shops PLC and within Pymble Public Catchment area.

Type : House
Building Size : 635 sqm
Land Size : 1700 sqm
View : <https://www.luschwitz.com.au/6883667>



Mark Blake
+612 9449 5511

A REMARKABLE HOME NOT ONLY CREATED TO IMPRESS BUT ALSO TO SIMPLY ENJOY!!!!



APPROX. INTERNAL AREA = 570 m²
 APPROX. EXTERNAL AREA = 65 m²
 TOTAL = 635 m²
 LAND SIZE = 1700 m²

PLANS SHOWN ONLY INDICATIVE OF LAYOUT. DIMENSIONS ARE APPROXIMATE.

23 King Edward Street, Pymble



Luschwitz

© 2026 - Luschwitz Real Estate