



22 Woodlands Avenue Pymble NSW

3  1  2 

INSPECTIONS AVAILABLE SATURDAYS AND WEDNESDAYS BY PRIOR APPOINTMENT.

This much loved, 1930's, full brick home retains character details and features throughout - complete with original kitchen, classic bathroom, high patterned ceilings, detailed timberwork, three fireplaces and leadlight windows.

Magnificent front and rear gardens include established hedges and feature plantings providing privacy and creating a unique outdoor space to explore and enjoy. The ideal North to rear aspect means the expansive lawns are bathed in sun year round.

Positioned on the high side, with sweeping views across

[For full version visit the website](#)

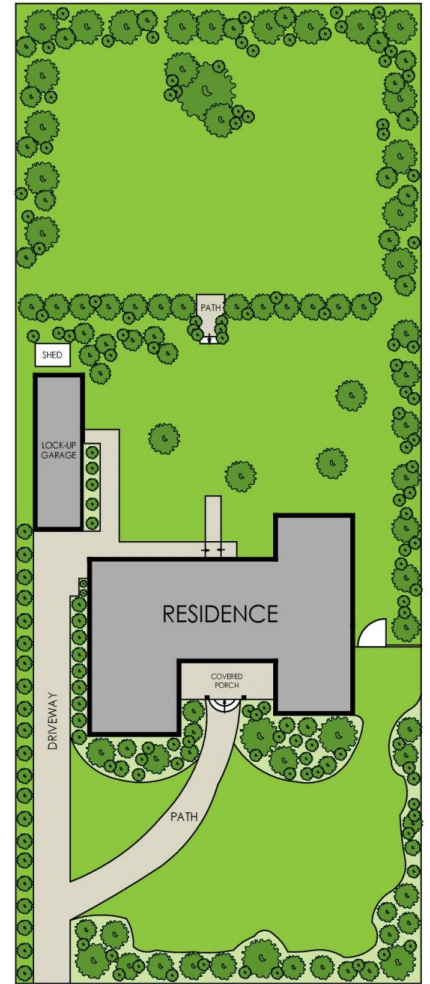
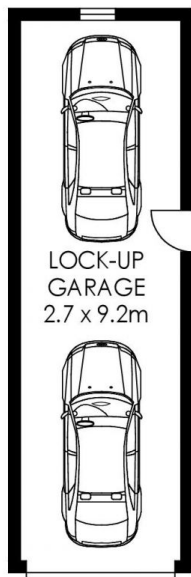
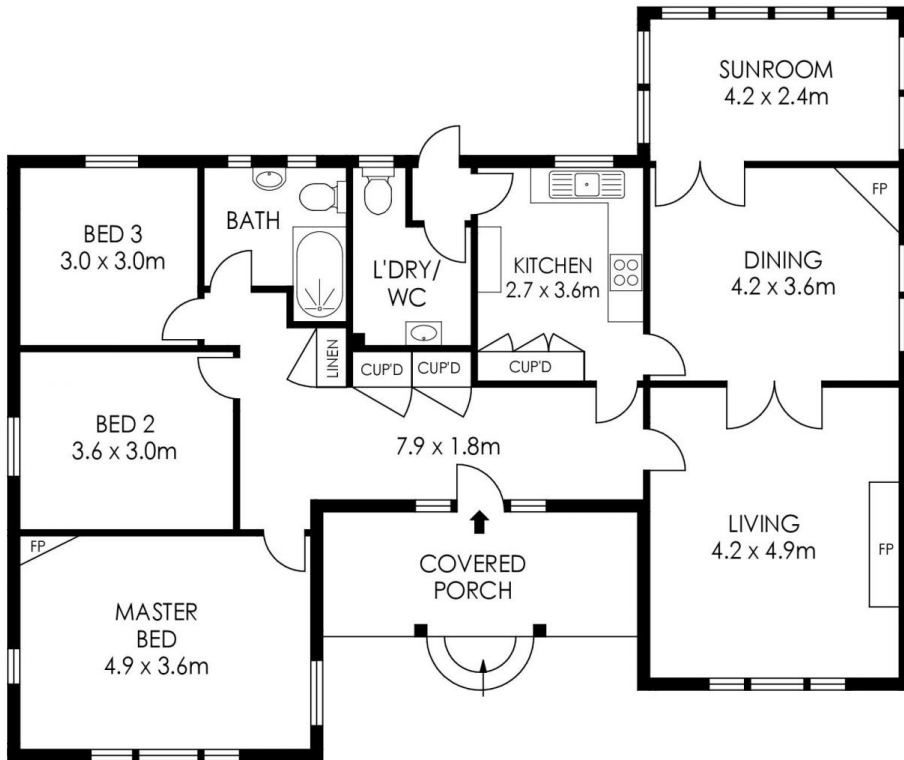
Type : House
Price : \$ 4,200,000
Land Size : 1448 sqm
View : <https://www.luschwitz.com.au/6605620>



Josh Luschwitz
 +612 9449 5511



Sue Hodges
 +612 9449 5511



**SITE PLAN
(NOT TO SCALE)**

APPROX. INTERNAL AREA = 127m²
 APPROX. EXTERNAL AREA = 11 m²
 TOTAL = 138 m²

PLANS SHOWN ONLY INDICATIVE OF LAYOUT. DIMENSIONS ARE APPROXIMATE.



22 Woodlands Avenue, Pymble

© 2026 - Luschwitz Real Estate