



### 315/9 Crystal Street Waterloo NSW

1  1  1 

Enjoying a sought after corner position with just one common wall, this modern one bedroom apartment offers convenience, space and style.

The flexible, open plan lounge/dining flows through oversize sliding doors to a generous entertaining balcony with unobstructed district views. The private, sun filled bedroom enjoys good separation from the living spaces and includes a walk-in robe. Further features include:

- \* A modern bathroom with separate bath and shower
- \* Kitchen with gas cooktop, stone benchtops and integrated dishwasher
- \* Oversize 'drive through' car space with lift access.
- Security building
- \* Reverse cycle air conditioning, internal laundry and great

**Type** : Apartment  
**Building Size** : 78 sqm  
**View** : <https://www.luschwitz.com.au/6348195>

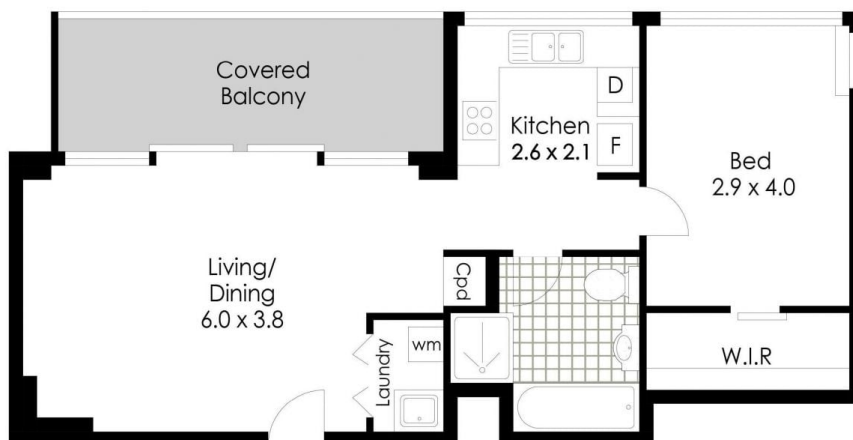
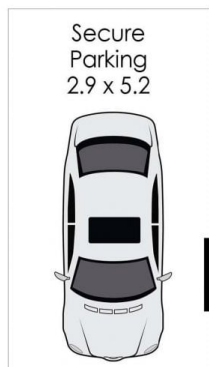


**Josh Luschwitz**  
 +612 9449 5511



**Anita Zhang**  
 +612 9449 5511

[For full version visit the website](#)



Disclaimer: Sydney Floor Plans A.B.N. 80 952 665 571 mob. 0402073101 03/21  
This plan serves only as a guide for marketing purposes.  
Dimensions are approximate and should not be relied upon for specific detail.

315/9 Crystal Street, Waterloo

\*Internal Area Approx: 54 sqm