



Level 8/801/8 Glen Street Milsons Point NSW

3 🛏 2 🚿 2 🚗

One of the most exclusive apartment buildings North of the Harbour by award winning Platino Properties, the Azure Waterfront Apartments are in a prime location just is a short stroll to trains, ferries, buses, Bradfield Park, Kirribilli village shops, cafés and the new Medical Centre and enjoys some of the most spectacular views of Sydney Harbour and the bridge .

Impeccably presented this spacious 229m2 eighth floor ultra modern apartment comes complete with wraparound balcony winter garden and offers ideal separation between living and the accommodation zones.

Open plan living/dining has floor-to-ceiling double glazed windows and doors. Covered wraparound entertainers'

Type : Apartment
Building Size : 229 sqm
View : <https://www.luschwitz.com.au/5355317>

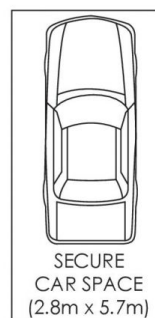
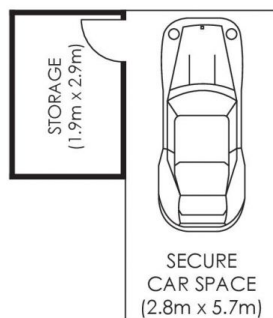
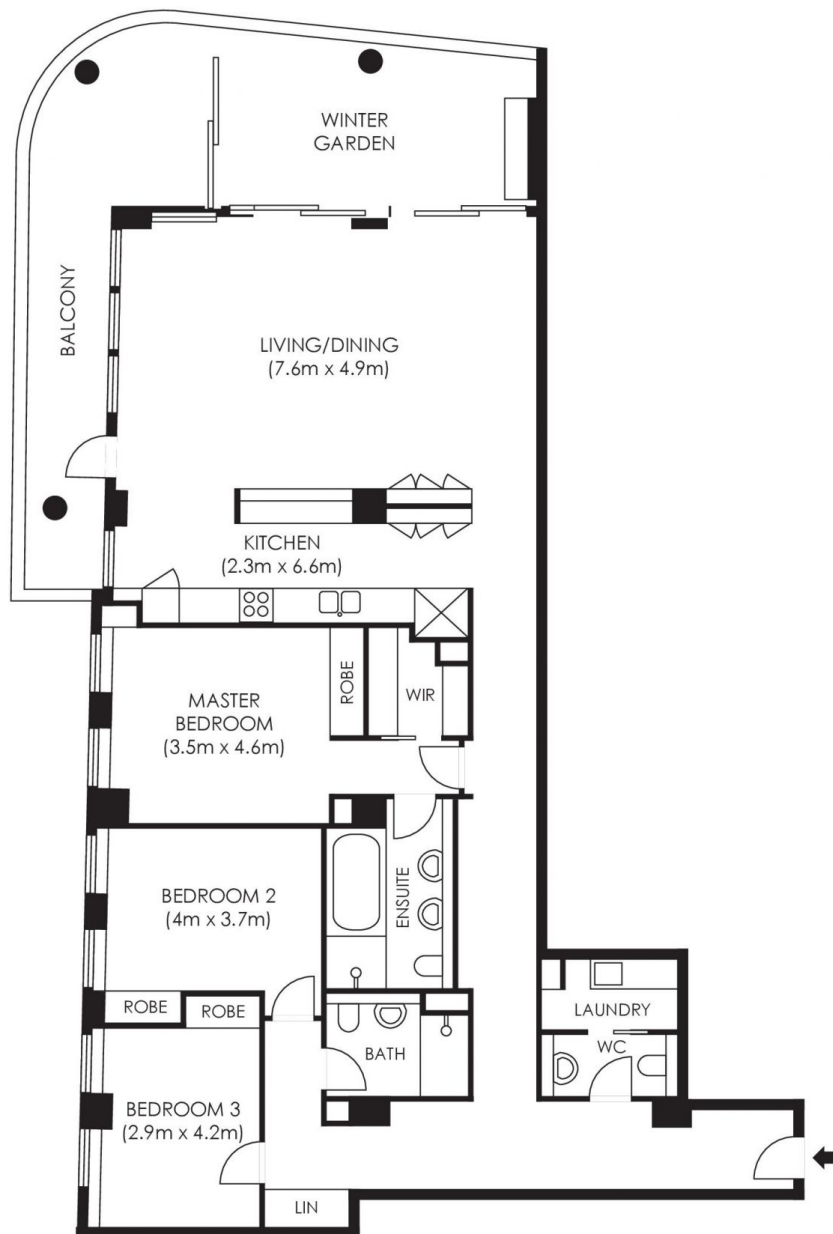


John Luschwitz
 +612 9449 5511



Carla Poletto
 0419 499 599

[For full version visit the website](#)



AREA ON TITLE = 229 sqm

Plans are intended as a guide only. No representations or warranties of any nature whatsoever are given or intended and any person using this information should always rely on their own enquiries. j interiors - real estate floor plans. jinteriors.info@gmail.com

