



35 St Johns Avenue Gordon NSW

5 🏠 3 🚗

Solid house in highly sought after location only 350 metres walk to the station and shops. Killara High School and Gordon West Primary School catchment area. Wide fronted level garden block with perfect rear-to-north aspect. Ideal for young children to play. Updated modern kitchen and glamorous bathrooms. Flexible floor plan suitable for separate in-laws or guests. Keenly priced for immediate sale. BE QUICK.

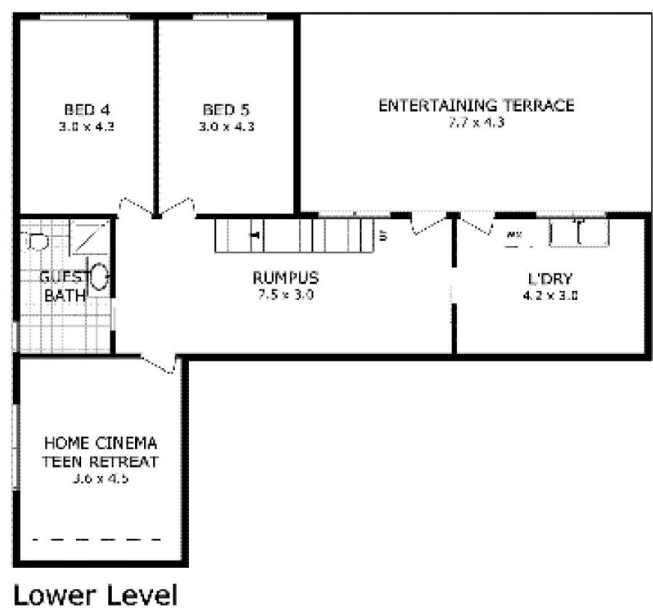
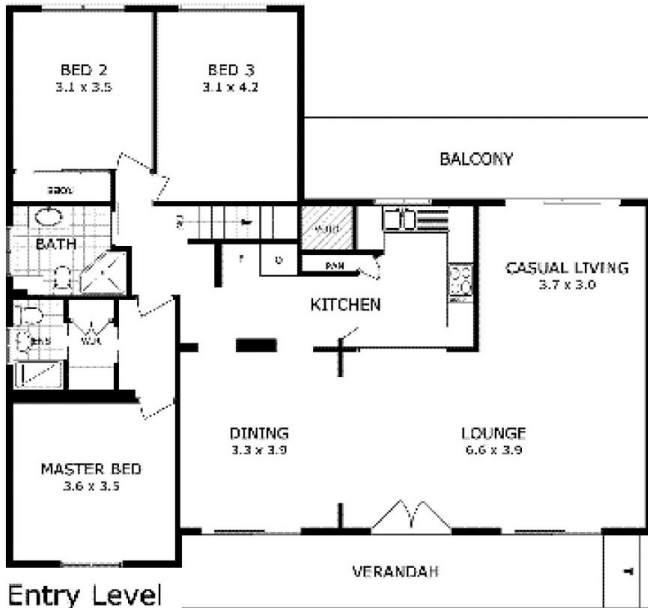
Type : House
Building Size : 278 sqm
View : <https://www.luschwitz.com.au/5295146>



John Luschwitz
 +612 9449 5511

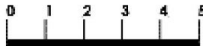


Josh Luschwitz
 +612 9449 5511



Entry Level

Lower Level



Scale in metres, indicative only. Dimensions are approximate. All information contained herein is gathered from sources we believe to be reliable. However we cannot guarantee its accuracy and interested parties should rely on their own enquiries.

- Entry Level - 130 m²
- Verandah - 15 m²
- Balcony - 14 m²
- Lower Level - 85 m²
- Entertaining - 34 m²



35 St Johns Avenue, Gordon