



11B Ada Avenue Wahroonga NSW

5 🛏 2 🚿 4 🚗

Set in magnificent 1865M of established tranquil gardens overlooking the Glade Oval complete with natural rock swimming pool and separate artist's studio.

Circular drive approach to this top quality full brick/concrete slab construction residence. One owner built in 1978. Spacious unique and ideal for easy living and relaxed entertaining. Designed around a central courtyard. Flexible 4/5 bedroom accommodation with separate In-law, Guest-Suite or Nanny with own access. High ceilings and large light filled rooms include formal lounge (open fire place), separate dining, original kitchen, separate family room, laundry/utility room, double lock-up garage with internal access and auto doors. Walk Abbotsleigh, Knox, Village shops and the station.

Type : House
Building Size : 300 sqm
Land Size : 1865 sqm
View : <https://www.luschwitz.com.au/5107944>



John Luschwitz
 +612 9449 5511



Josh Luschwitz
 +612 9449 5511

[For full version visit the website](#)

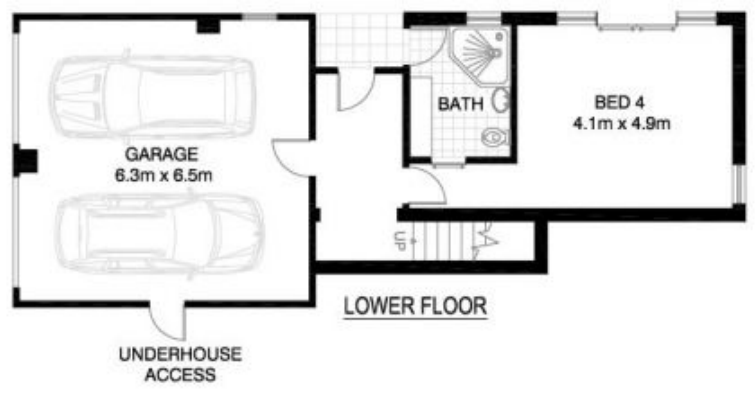


SITE PLAN

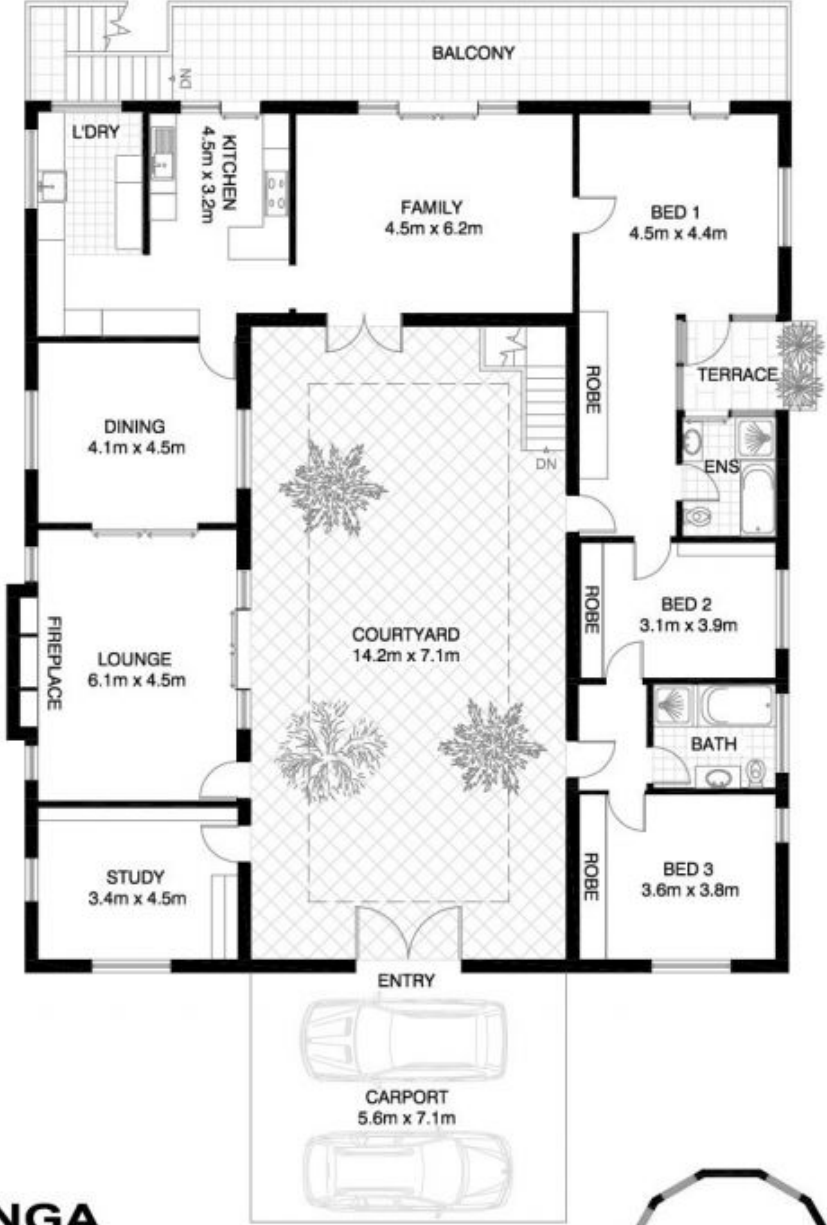
A D A A V E N U E

WAHROONGA 11B ADA AVENUE

*INTERNAL FLOOR AREA APPROX 293m²
INCL GARAGE & STUDIO



LOWER FLOOR



UPPER FLOOR



STUDIO (NOT ACTUAL LOCATION)

*NOTE: ALL DIMENSIONS SHOWN ARE APPROXIMATE AND SHOULD ONLY BE USED AS A GUIDE. NOT TO SCALE.