



2A Orana Avenue Pymble NSW

4  2  3 

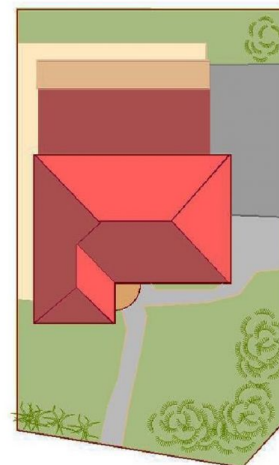
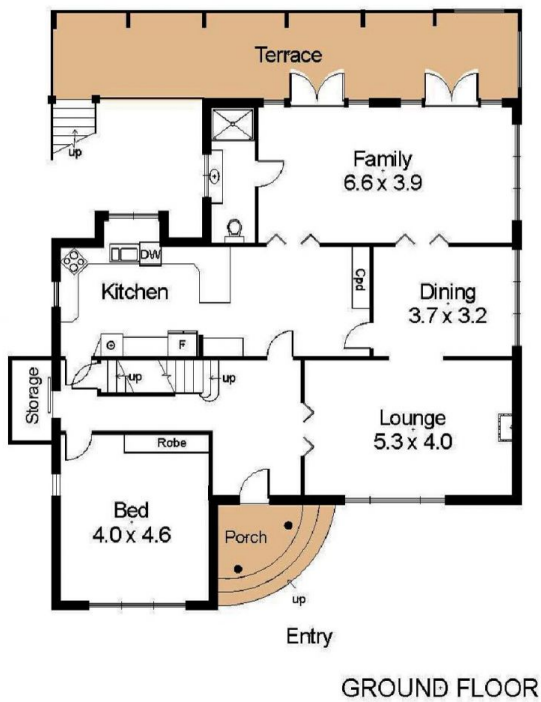
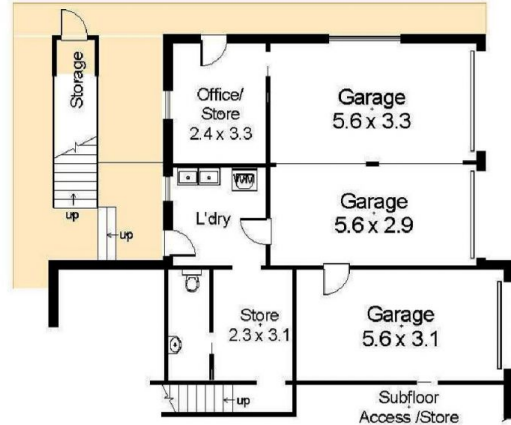
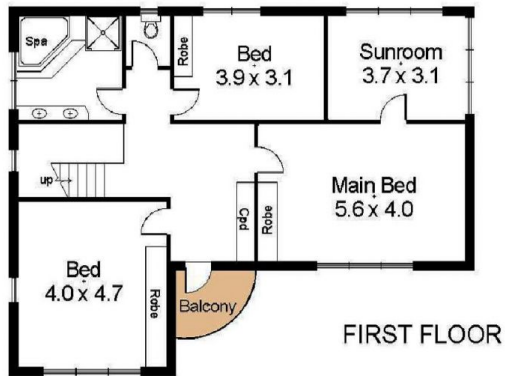
Spacious character home beautifully presented in "as new" condition on easy care low maintenance level garden block. Perfect opportunity for the family wanting the size and quality of a large grand home but not the upkeep and work. Prestigious east side address easy walk to Pymble station and Pymble Ladies College.

Generous entertaining includes formal lounge with open fire separate dining, stunning eat in kitchen with stone bench tops adjoining family room capturing full northern sun. Three car garaging with workshop and wine cellar. Located in the Pymble Public School catchment area. Just ready to move in and enjoy

Type : House
Building Size : 343 sqm
View : <https://www.luschwitz.com.au/5106756>



Stephen Sales
+612 9449 5511



SITE PLAN

2a Orana Avenue, Pymble

INTERNAL FLOOR AREA (approx) 343m² : 37 sq

Disclaimer : K & S Smith-White ABN 84 553 107 368 Trading as NORTHSIDE FLOORPLANS Pymble - Hornsby Tel. 9144 2474; Mob. 0427 442 474
This floor plan serves only as a guide for promotional purposes and should not be scaled or relied upon for any specific detail. No liability will be accepted.
Prospective purchasers should make and rely upon their own inquires to determine the accuracy of all measurements and features.