



3 Donlea Way Mount Colah NSW

4 🏠 3 🚗 2 🚗

Very appealing, this spacious, split level, modern residence enjoys a commanding position with a fabulous outlook. Set on 693 sqm with a private, grassed backyard adjoining the Hunt Reserve offering plenty of room for children to play. Quiet yet convenient - just 11 minutes via bus from Hornsby station to the front door.

Type : House
Building Size : 178 sqm
Land Size : 693 sqm
View : <https://www.luschwitz.com.au/5025255>

Built in 1992, the flexible floor plan includes 4 bedrooms with built-in robes and main with en-suite. The large living room with lofted ceilings opens to a full length balcony with views across the treetops. Modern kitchen adjoining open plan dining room. Huge downstairs rumpus area with bathroom is perfect as a teenage retreat or separate in-law/guest accommodation. Family bathroom with separate toilet plus laundry. Double lock-up garage with

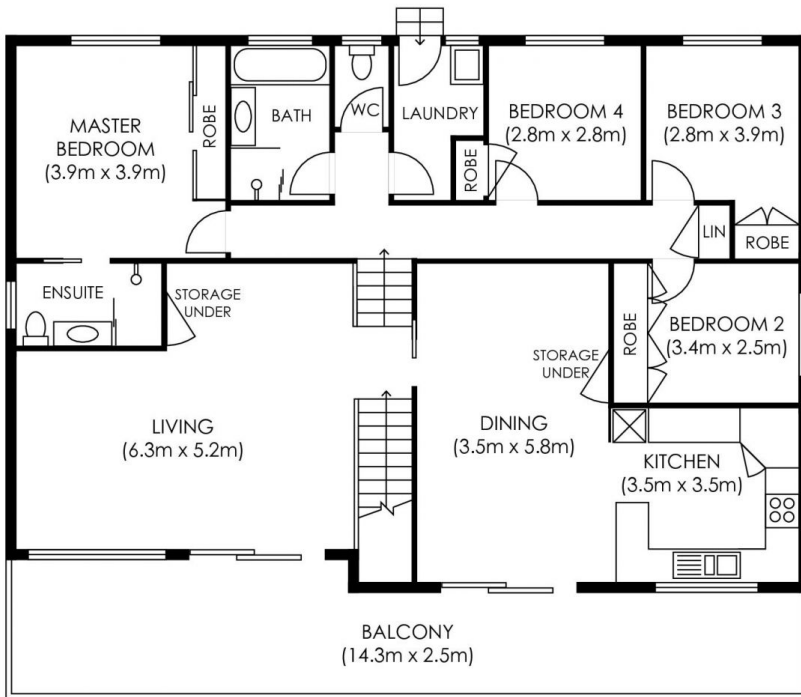


Josh Luschwitz
 +612 9449 5511

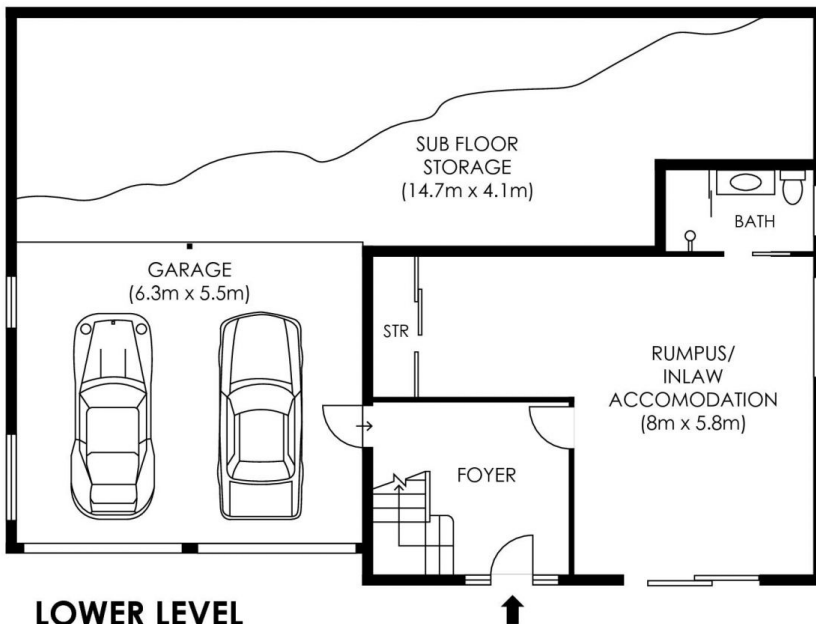


John Luschwitz
 +612 9449 5511

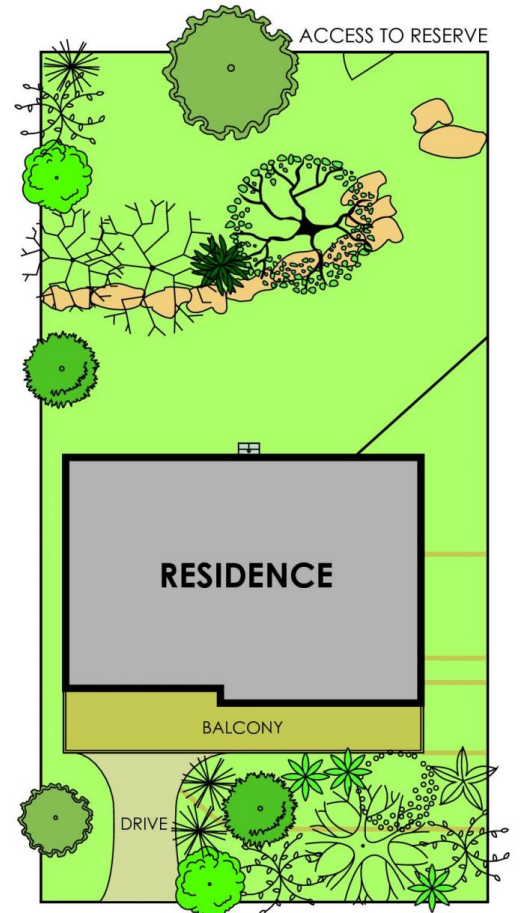
[For full version visit the website](#)



UPPER LEVELS



LOWER LEVEL



SITE PLAN
not to scale

INTERNAL AREA
APPROX = 144.2 sqm
GARAGE = 34.6 sqm

Plans are intended as a guide only. No representations or warranties of any nature whatsoever are given or intended and any person using this information should always rely on their own enquiries. [jinteriors - real estate floor plans. jinteriors.info@gmail.com](mailto:jinteriors.info@gmail.com)

