



### 19 Dalrymple Crescent Pymble NSW

4 🏠 3 🚗 2 🚗

This much loved family home is offered for the first time since its construction by Pettit + Sevitt in 1970. Designed by Ken Woolley AM the home retains many original architectural features such as vaulted ceilings, Western red cedar timber work, clinker bricks and floor to ceiling windows overlooking the entertaining terrace and adjoining reserve. Sympathetically extended in the 1970's, and more recently renovated, the home combines mid-century style with modern conveniences such as reverse cycle air conditioning, real flame gas fire place, fully updated DAN kitchen with Miele and Kleenmaid appliances and Louis Poulsen light fittings, stylish bathrooms and exceptional storage space. The floor plan includes 4 spacious bedrooms plus a study/5th bedroom and ample formal and casual living spaces for the modern family. The sun

**Type** : House  
**Land Size** : 999 sqm  
**View** : <https://www.luschwitz.com.au/4980387>

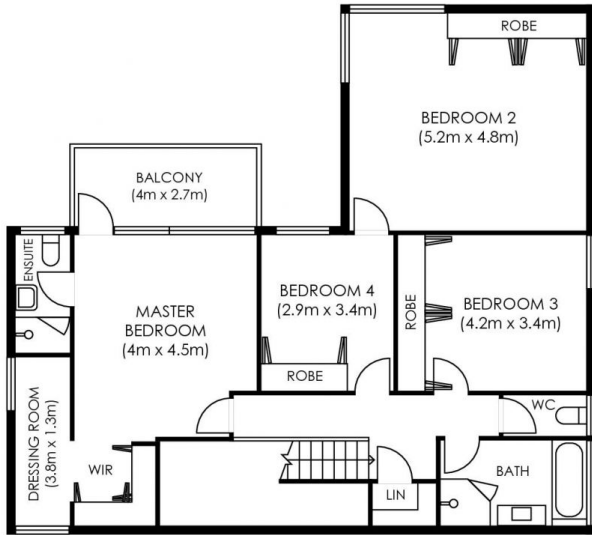


**Josh Luschwitz**  
 +612 9449 5511

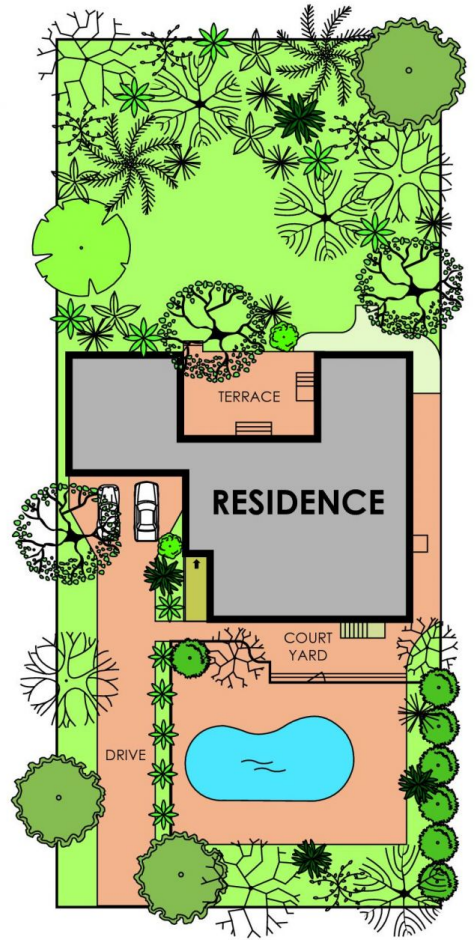


**John Luschwitz**  
 +612 9449 5511

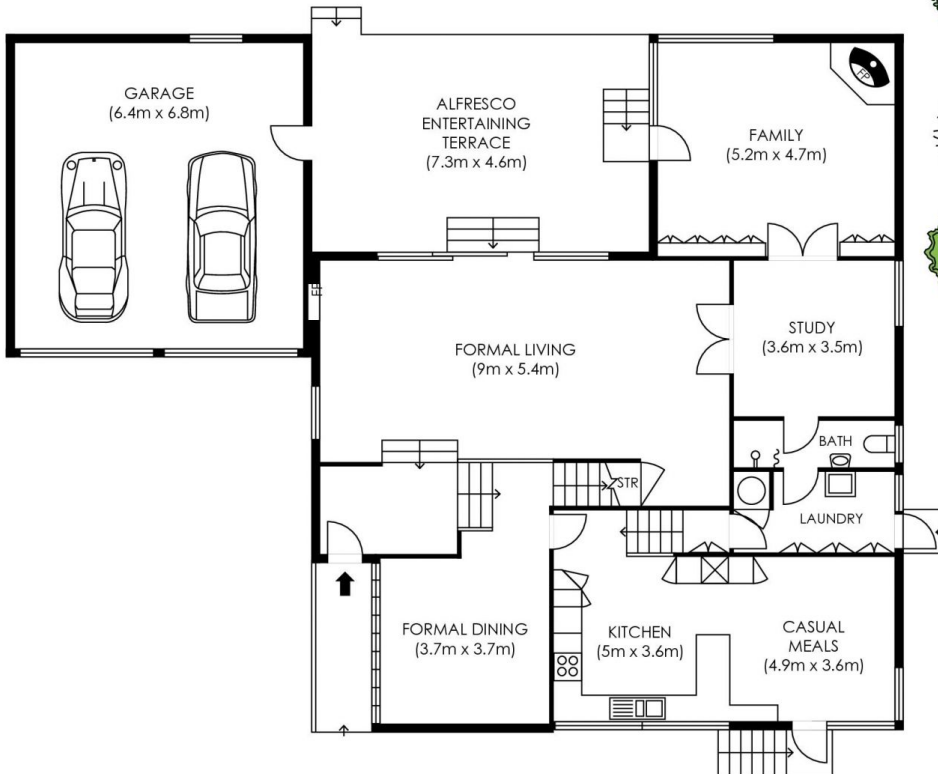
[For full version visit the website](#)



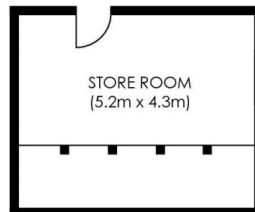
**FIRST FLOOR**



**SITE PLAN  
not to scale**



**GROUND FLOOR**



**INTERNAL AREA = 237sqm**

**GARAGE = 43sqm**

**STR ROOM = 22sqm**

Plans are intended as a guide only. No representations or warranties of any nature whatsoever are given or intended and any person using this information should always rely on their own enquiries. [jinteriors - real estate floor plans. jinteriors.info@gmail.com](mailto:jinteriors.info@gmail.com)

