



7/3 Milner Road Artarmon NSW

2  1  1 

Enter via private stairs to an oasis in the heart of Artarmon! Enjoying a fantastic location, an easy walk to Thomson Park, Artarmon Public School, Artarmon train station, shops, cafes and restaurants, this quality built, full brick townhouse is on the market for the first time in 20 years. Designed and built by Mirvac in around 1977, features of the property include - a spacious open plan lounge/dining with french doors opening to the sunny courtyard and low maintenance garden. Two generous bedrooms, both with built-ins and a peaceful, leafy outlook. Modern, light filled kitchen with adjoining drying courtyard. Large bathroom with bath and separate shower plus the convenience of a powder room downstairs. Internal laundry. Single lock-up garage with room for storage. Freshly painted and carpeted, this instantly appealing

Type : Townhouse

View : <https://www.luschwitz.com.au/4833843>

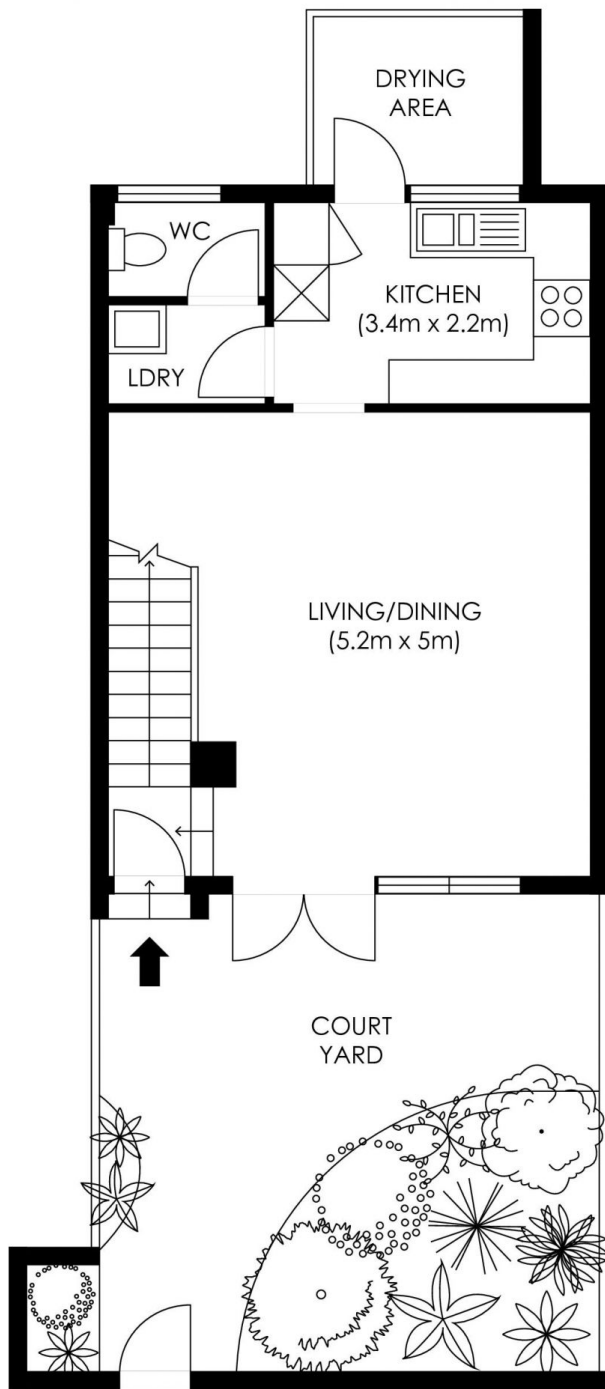


Josh Luschwitz
 +612 9449 5511

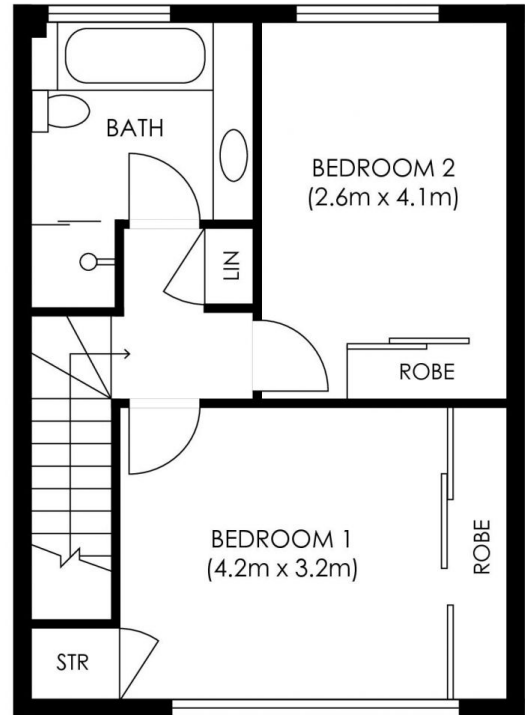


Anita Zhang
 +612 9449 5511

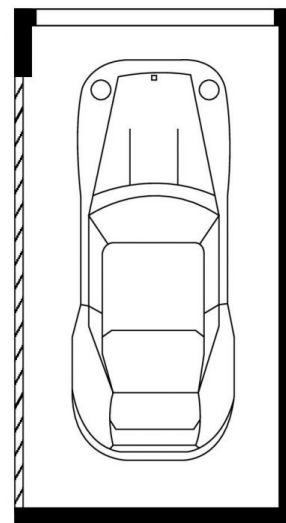
[For full version visit the website](#)



GROUND FLOOR



FIRST FLOOR



SECURE GARAGE (2.7m x 5.7m)

**INTERNAL AREA
APPROX = 73 sqm**

Plans are intended as a guide only. No representations or warranties of any nature whatsoever are given or intended and any person using this information should always rely on their own enquiries.

j interiors - real estate floor plans. jinteriors.info@gmail.com

