



13/28-30 Eastern Road Turramurra NSW

2  1  1 

Stunning renovation where no expense has been spared creating this superb, light filled and very spacious apartment. Impeccably presented enjoying a blissfully peaceful and prized whisper quiet east-side location just moments stroll to the rail and vibrant cafe lifestyle.

Elevated balcony overlooking the leafy streetscape. New high ceilings and cornices with modern architectural lines. Solid hardwood flooring to open plan formal lounge and dining rooms. Italian Marble floor tiles to kitchen and hallways. New kitchen with Italian Marble bench tops, Miele appliances and fully integrated Miele washing machine and dryer. Two large light-filled bedrooms both with generous new built in robes. New Italian marble bathroom with wheel chair access for shower and heated floor. Fully renovated

Type : Unit
Building Size : 99 sqm
View : <https://www.luschwitz.com.au/4758464>

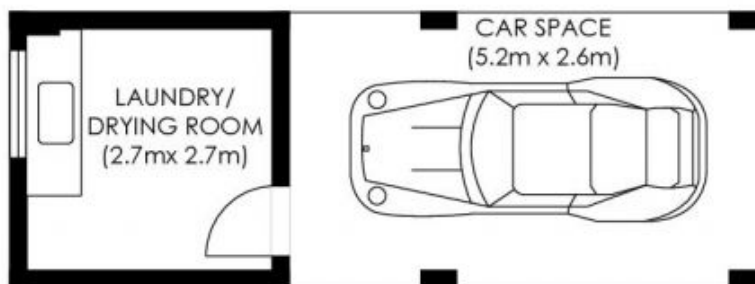
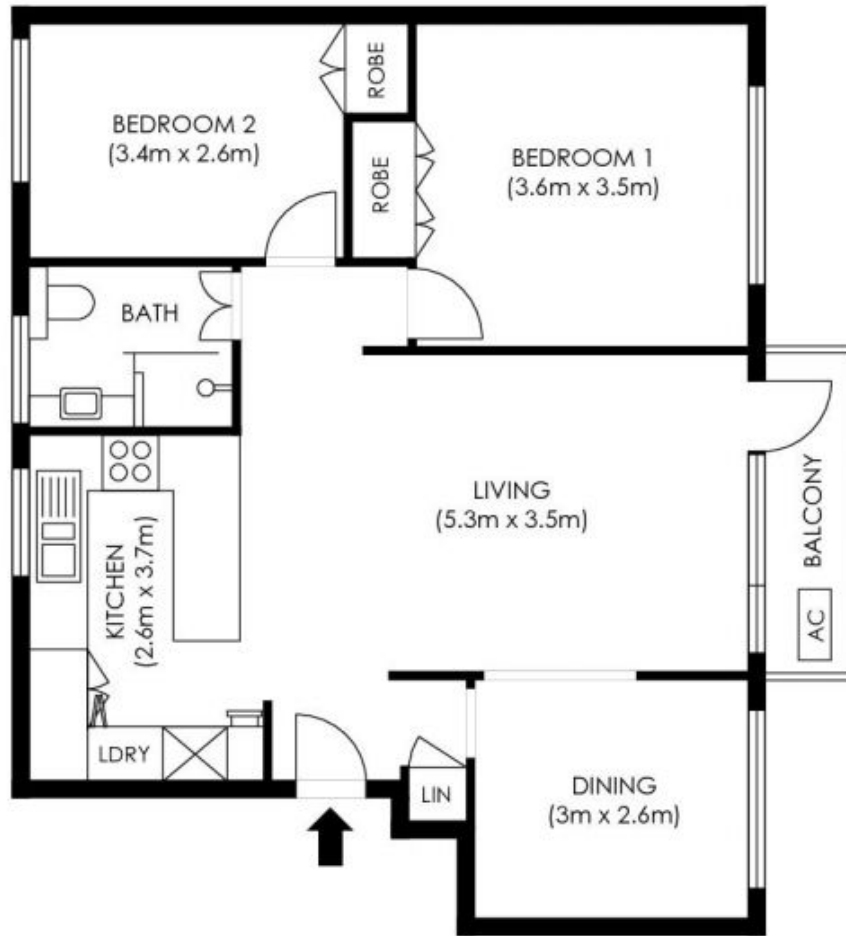


Josh Luschwitz
+612 9449 5511



John Luschwitz
+612 9449 5511

[For full version visit the website](#)



INTERNAL AREA
APPROX = 99 sqm

Plans are intended as a guide only. No representations or warranties of any nature whatsoever are given or intended and any person using this information should always rely on their own enquiries.

j interiors - real estate floor plans. jinteriors.info@gmail.com

