



92 Boundary Road Wahroonga NSW

4  1  1 

Enchanting 1896M2 level and ultra private parkland garden block. Perfect rear to north aspect. No easements. Original condition 50's bungalow screaming out for a either a major renovation or demolition and new build a luxury residence. In highly sought after prestige east side location surrounded by some of Wahroonga's finest properties.

The existing home comprises 4 bedrooms, lounge and dining room with pot belly combustion stove, sun-room, original kitchen and bathroom, laundry with extra WC and single lock-up garage.

A rare opportunity with enormous potential offered at land value!

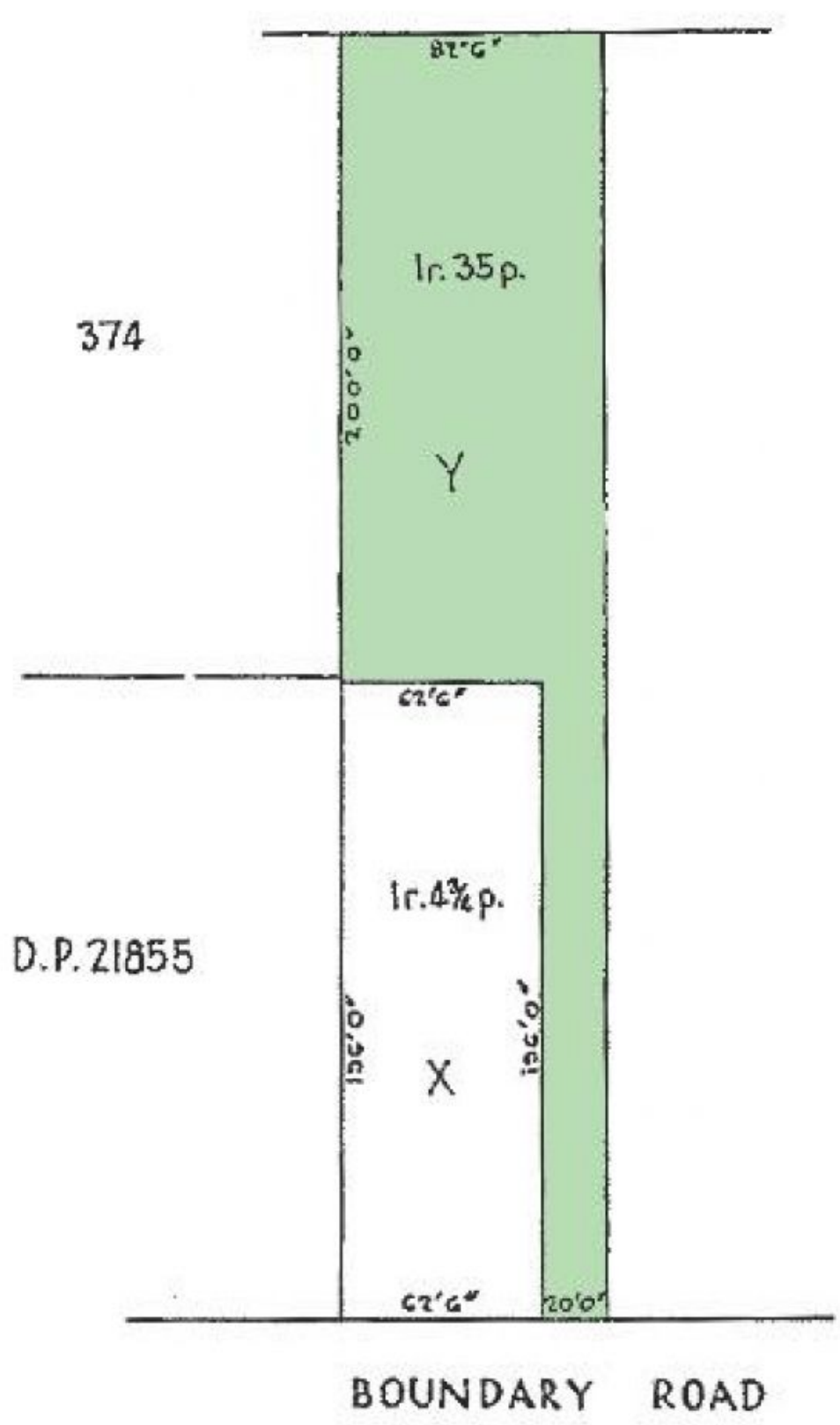
Type : House
Land Size : 1896 sqm
View : <https://www.luschwitz.com.au/4603897>

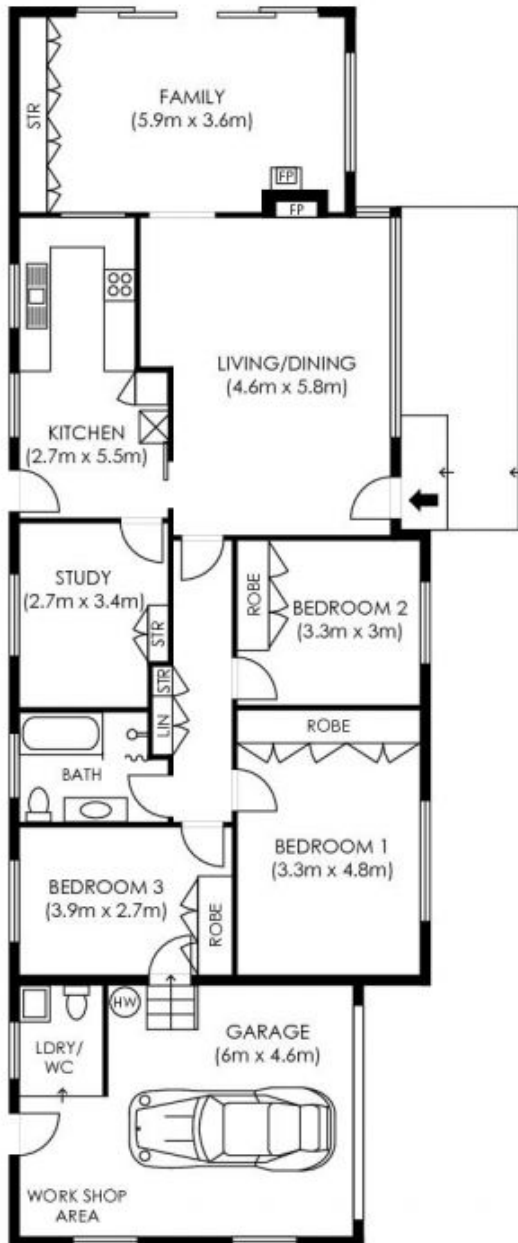


Josh Luschwitz
 +612 9449 5511



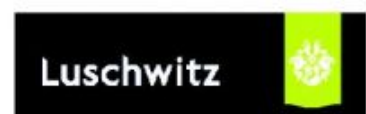
John Luschwitz
 +612 9449 5511





SITE PLAN
not to scale

INTERNAL AREA
APPROX = 115 sqm
GARAGE = 28 sqm



Plans are intended as a guide only. No representations or warranties of any nature whatsoever are given or intended and any person using this information should always rely on their own enquiries. [jinteriors - real estate floor plans. jinteriors.info@gmail.com](mailto:jinteriors.info@gmail.com)