



210 Ryde Road West Pymble NSW

3  1  1 

Charming timber/tile bungalow presented in original condition. Elderly owner moving to nursing home sadly sells her cherished and much loved family home. Built in 1958 this one owner home is set on a wide fronted 835m² sunny level block. Bus stop right at the door. Easy stroll to Gordon West Public School and the Duneba Avenue local shops. The accommodation comprises formal lounge and dining. Gas heater. 3 bedrooms. Country style kitchen. Period bathroom. Big laundry. Single lock-up garage plus store.

This is the first time the home has been offered to market in over 60 years.
 Unrepeatable value opportunity. Bring your paintbrush!

Type : House
Building Size : 116.5 sqm
Land Size : 835 sqm
View : <https://www.luschwitz.com.au/4587882>

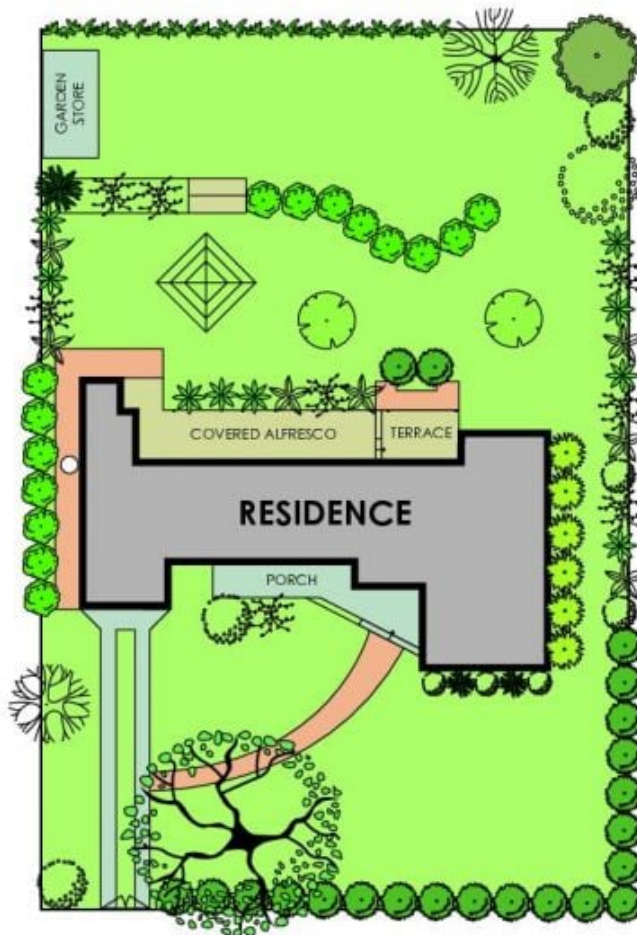
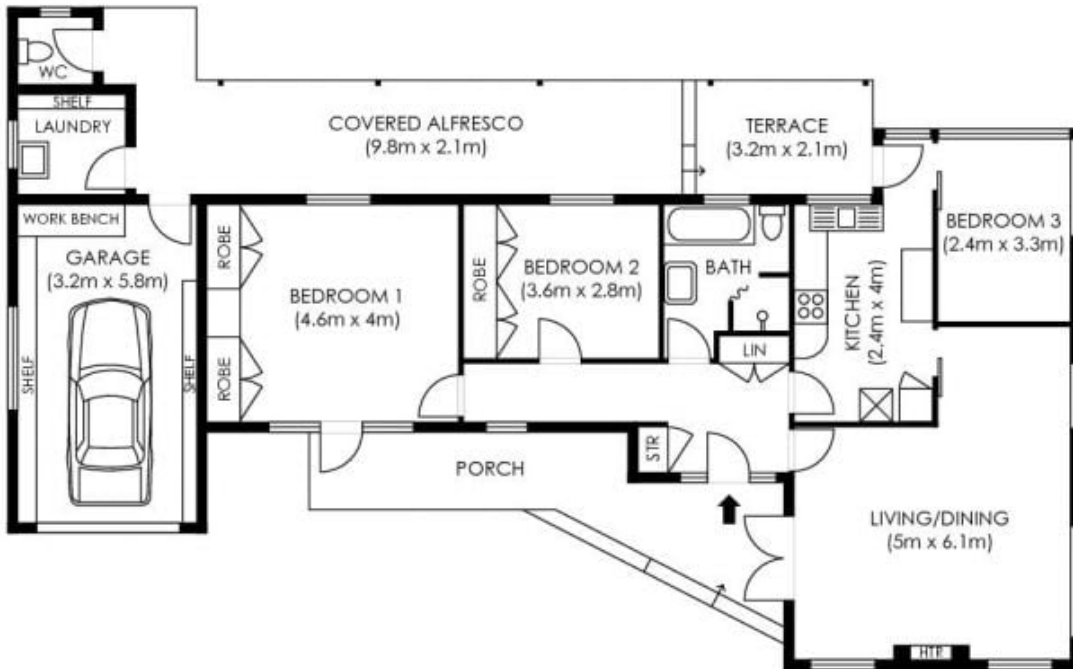


Josh Luschwitz
 +612 9449 5511



John Luschwitz
 +612 9449 5511

[For full version visit the website](#)



SITE PLAN
not to scale

INTERNAL AREA
APPROX = 116.5sqm

Plans are intended as a guide only. No representations or warranties of any nature whatsoever are given or intended and any person using this information should always rely on their own enquiries.

j interiors - real estate floor plans. jinteriors.info@gmail.com

