



40 Gilroy Road Turramurra NSW

3 🏠 2 🚿 2 🚗

Offered for the first time in 40 years, this much loved character home has been impeccably maintained and updated, blending modern conveniences with magnificent period features such as high ceilings, polished timber floors, leadlight and stained glass windows, detailed timber work and an impressive tiled front verandah.

The single level floor plan includes 3 bedrooms with built-ins plus study/4th bed, separate formal dining and living rooms, modern bathrooms and laundry plus a spacious, casual dining/family room with adjoining gas kitchen.

The outstanding, paved outdoor entertainment areas and covered pergola are surrounded by enchanting, easy care gardens and flow to the solar heated, glass fenced private swimming pool - all enjoying the ideal Northerly aspect.

Type : House
Land Size : 771 sqm
View : <https://www.luschwitz.com.au/4570004>

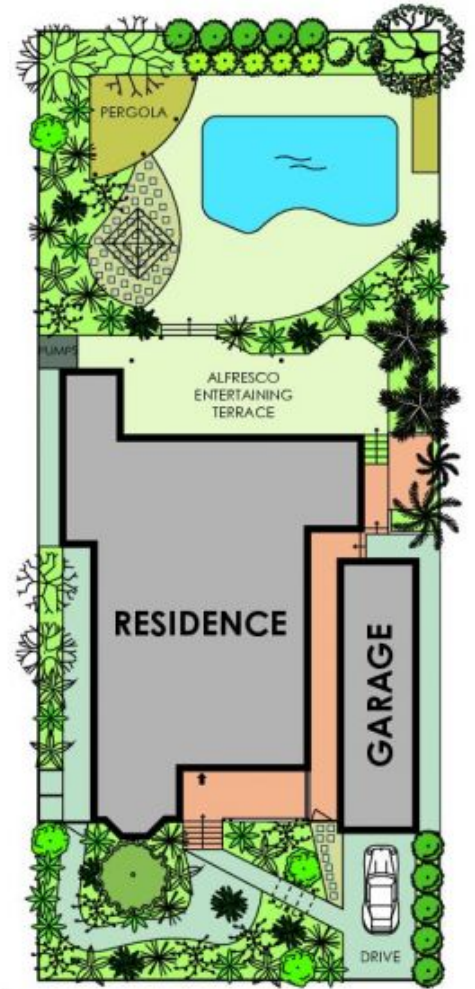
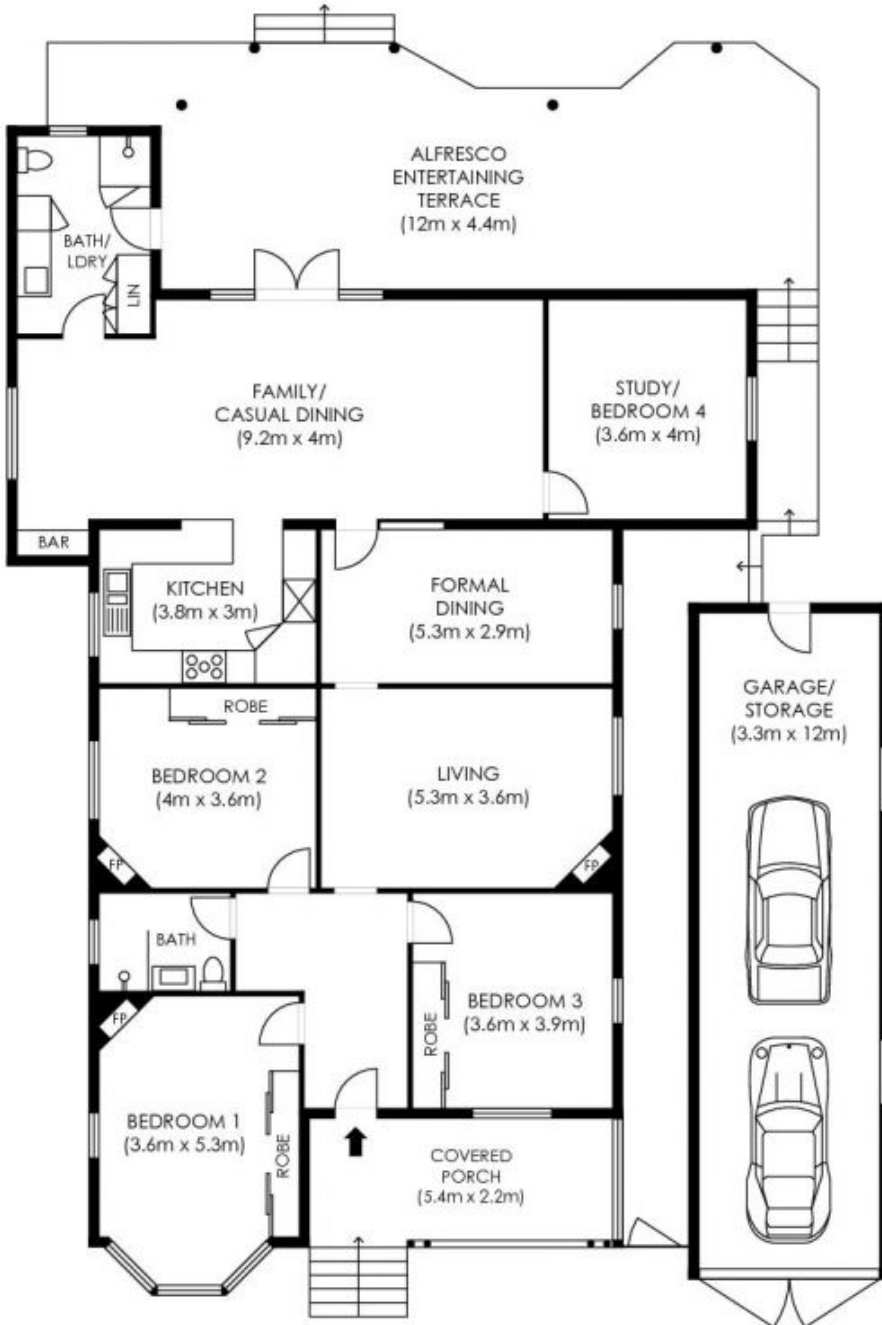


Anita Zhang
 +612 9449 5511



Josh Luschwitz
 +612 9449 5511

[For full version visit the website](#)



SITE PLAN
not to scale

INTERNAL AREA
APPROX = 165sqm
GARAGE = 39sqm

Plans are intended as a guide only. No representations or warranties of any nature whatsoever are given or intended and any person using this information should always rely on their own enquiries.



j interiors - real estate floor plans. jinteriors.info@gmail.com