



9 Greendale Avenue Pymble NSW

5  3  3 

This is another full brick quality family home by "Meadowbank Homes" located in a quiet and peaceful tree lined street.

The floor plan offers the ultimate in family living and entertaining leading to the sunny northern easy-care fully landscaped gardens and pool with exceptional living spaces for the largest of families. Grand entry foyer with sweeping staircase, formal lounge (open fire), separate dining, eat in kitchen, family and rumpus rooms flowing to the wonderful covered terrace for those casual late afternoon barbecues. 5 double bedrooms (main with walk-in robe and en-suite), study and 3 new bathrooms. Pymble Public Catchment, close PLC, Pymble Station and St Ives Village. **FIRST TIME OFFERED TO THE MARKET AND WILL SELL**

[For full version visit the website](#)

Type : House

View : <https://www.luschwitz.com.au/4569986>



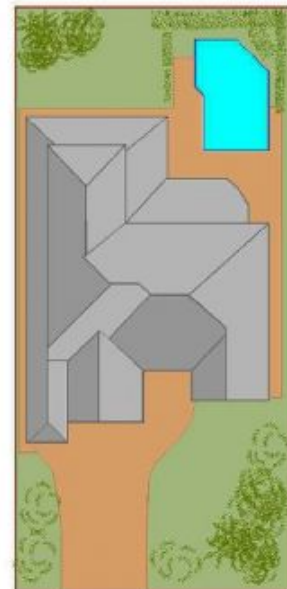
Mark Blake
+612 9449 5511



FIRST FLOOR



GROUND FLOOR



SITE PLAN

9 Greendale Avenue, Pymble

INTERNAL FLOOR AREA (approx) 487m² : 52 sq

Disclaimer: K & S Smith-White ABN 84 553 107 368 Trading as NORTHSIDE FLOORPLANS Pymble - Hornsby Tel. 9144 2474; Mob. 0427 442 474
This floor plan serves only as a guide for promotional purposes and should not be scaled or relied upon for any specific detail. No liability will be accepted.
Prospective purchasers should make and rely upon their own inquiries to determine the accuracy of all measurements and features.