



28/578-584 Pacific Highway Killara NSW

2  1  1 

Presented in "as new" condition, this superb quality Mirvac built sunny Garden Apartment is located at the rear of the complex away from the highway in the highly sought after "Hadley Wood".

Spacious and superbly presented with 159m2 on title and bathed in an abundance of natural light. The unit has excellent flow from the large living areas to a private covered terrace which leads onto your very own private sunny lawns and gardens.

Features

- 2 double bedrooms with built-ins cupboards
- Designer kitchen with imported stainless steel appliances
- Glamorous naturally ventilated bathroom and separate

Type : Apartment
Building Size : 159 sqm
View : <https://www.luschwitz.com.au/4569983>

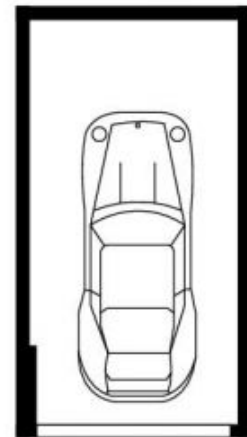
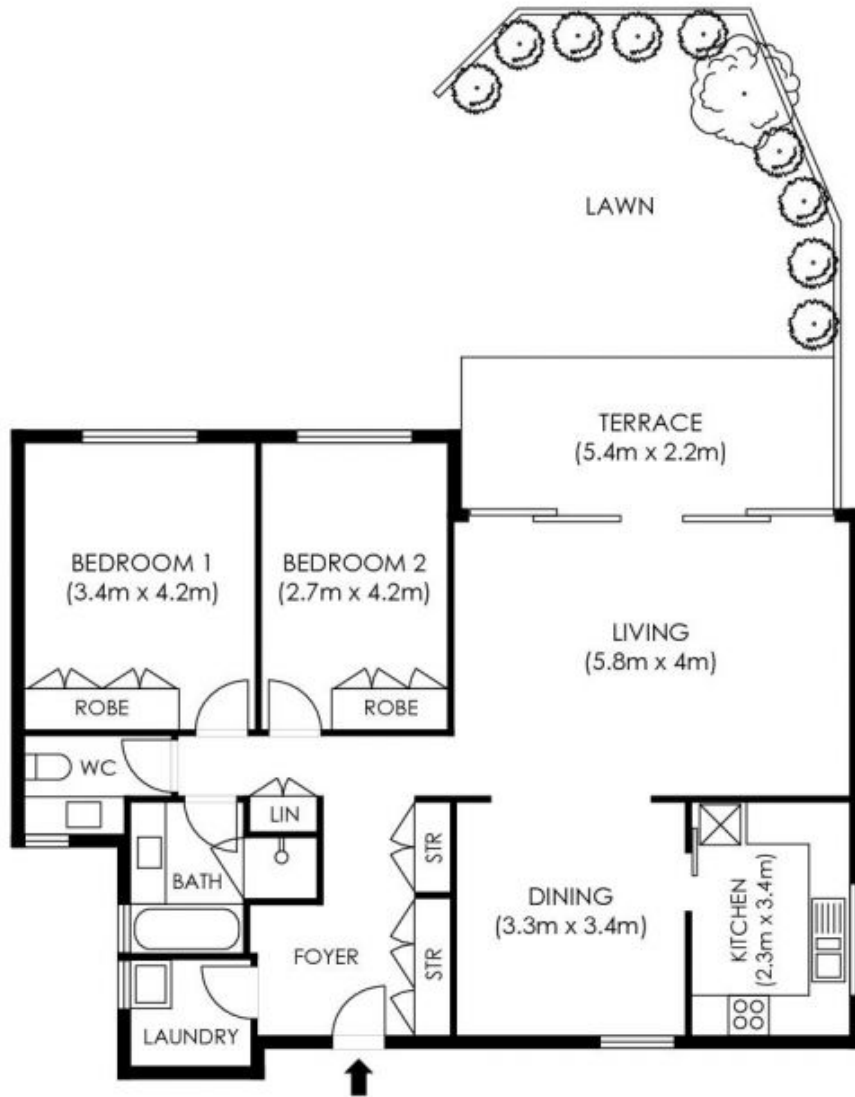


Josh Luschwitz
+612 9449 5511



John Luschwitz
+612 9449 5511

[For full version visit the website](#)



GARAGE
(3.1m x 5.9m)

Area: Total area on title 159m² Apartment: 141m²

Luschwitz



Plans are intended as a guide only. No representations or warranties of any nature whatsoever are given or intended and any person using this information should always rely on their own enquiries. [jinteriors - real estate floor plans. jinteriors.info@gmail.com](mailto:jinteriors.info@gmail.com)