



34 Watts Road Ryde NSW

3  1  1 

A rare find on a "bowling green block".

Originally purchased in 1951 for the princely sum of 250 pounds as vacant land, and part of a land grant acquisition. Never has this property been presented for sale, having been occupied by it's original owners and builders.

This "rock solid" home was built with the intention of being a 2-storey so, the foundations are double brick into the bedrock. The family worked together to build a beautiful family home, often working late into the evenings after their day jobs , moving bricks and sand etc. to save costs where subcontractors had to be used. A modest but functional home was built for themselves and their 2 children, who are now looking to pass on a piece of their family history to a new family. The interior finishes were all done by the

Type : House
Land Size : 670 sqm
View : <https://www.luschwitz.com.au/4569949>

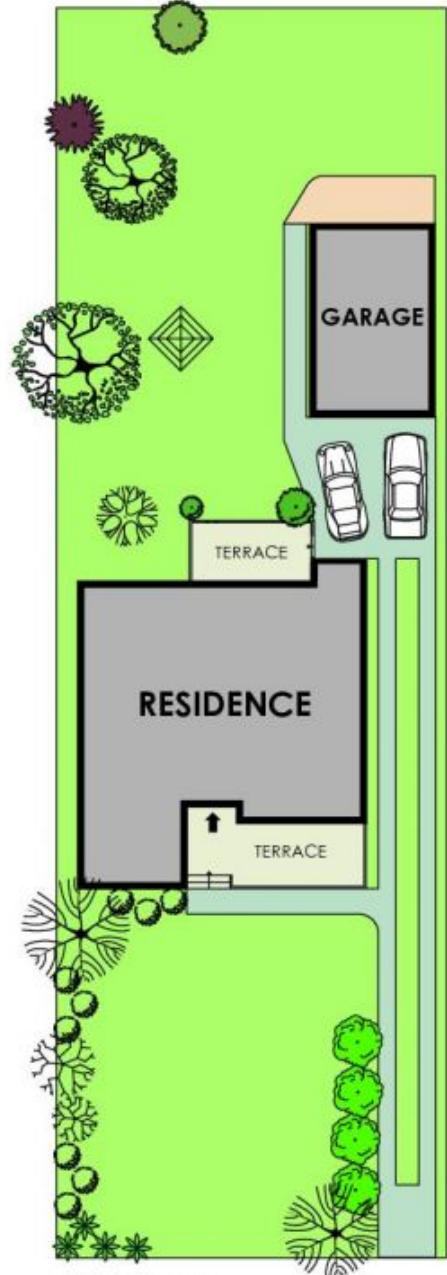
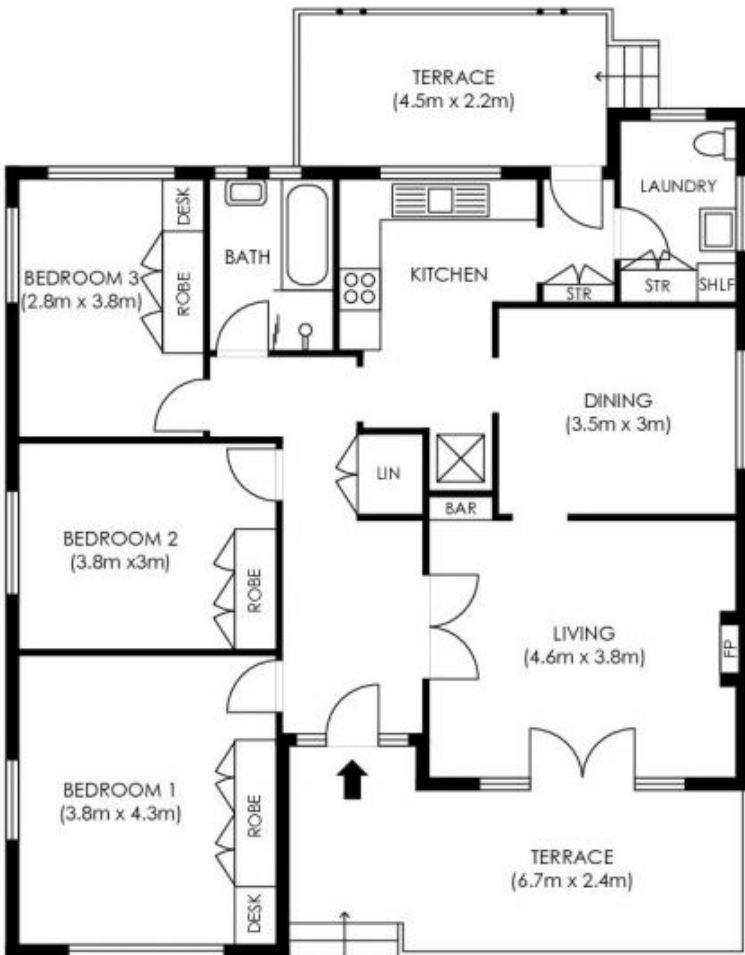
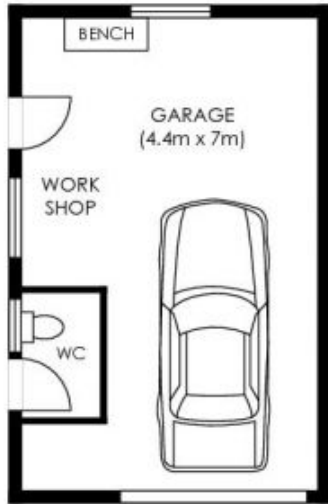


Josh Luschwitz
 +612 9449 5511



John Luschwitz
 +612 9449 5511

[For full version visit the website](#)



SITE PLAN
not to scale

INTERNAL AREA
APPROX = 188 sqm

Plans are intended as a guide only. No representations or warranties of any nature whatsoever are given or intended and any person using this information should always rely on their own enquiries.

j interiors - real estate floor plans. jinteriors.info@gmail.com

