



27 Alvona Avenue St Ives NSW

4  3  2 

Set on around 930 sqm, this instantly appealing home is conveniently located walking distance to St Ives High and Primary schools and city and station bus stops with the popular St Ives Shopping village, Masada College, Brigidine College and Sydney Grammar Prep School only moments away.

Accommodation comprises of 4 bedrooms with built-ins, including master with double robe and ensuite plus a separate study. A modern, eat-in, gas kitchen overlooks the spacious entertaining deck, the sun drenched, private, glass fenced pool and the perfectly level lawn and gardens. The huge, open plan family living complements stylish formal lounge and dining rooms.

Type : House
Land Size : 930 sqm
View : <https://www.luschwitz.com.au/4569947>

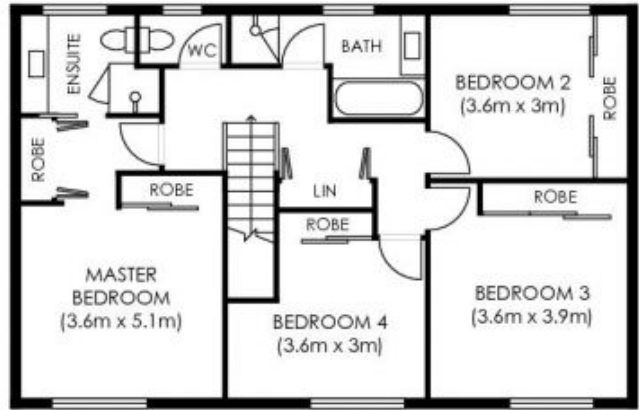


Josh Luschwitz
 +612 9449 5511

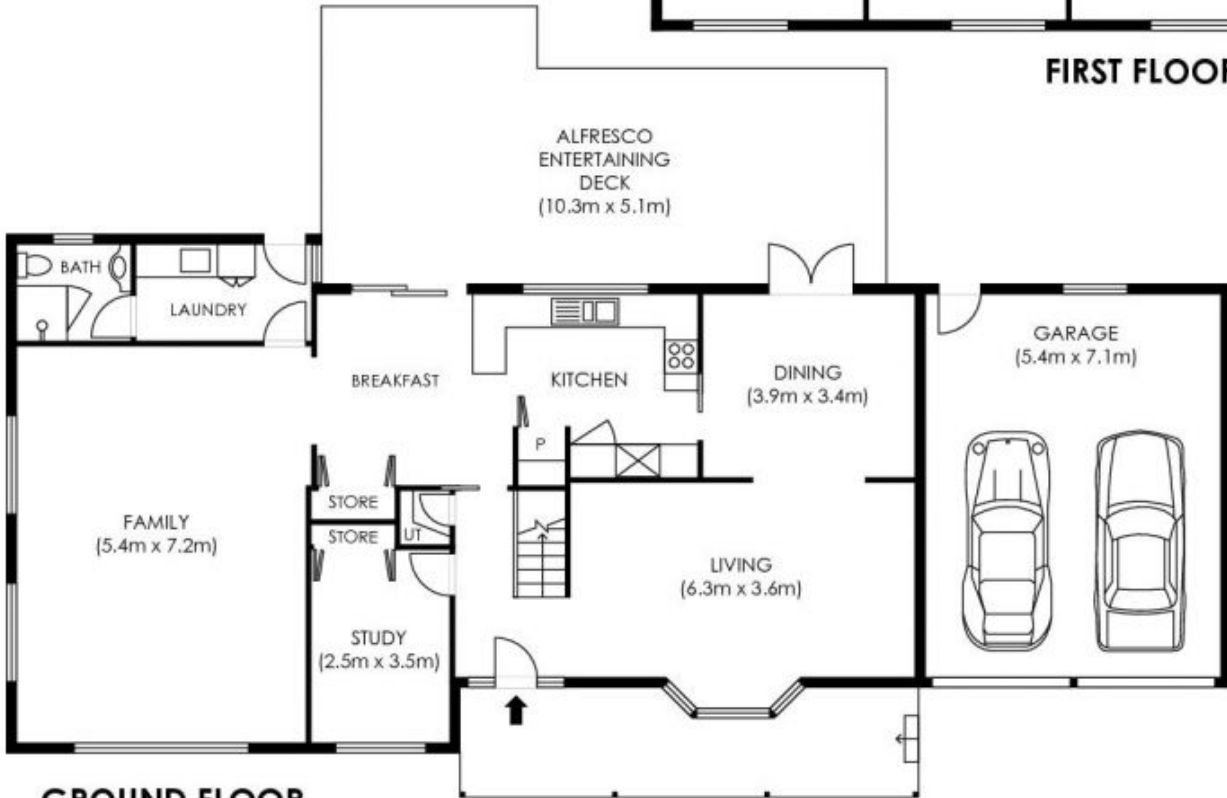


John Luschwitz
 +612 9449 5511

[For full version visit the website](#)



FIRST FLOOR



GROUND FLOOR



SITE PLAN
not to scale



Plans are intended as a guide only. No representations or warranties of any nature whatsoever are given or intended and any person using this information should always rely on their own enquiries. [jinteriors - real estate floor plans. jinteriors.info@gmail.com](mailto:jinteriors.info@gmail.com)