



33 Highlands Avenue Wahroonga NSW

2  1  1 

Magnificent 973M level parkland block basking in the sun. Highly sought after and tightly held exclusive location. Quiet cul-de-sac 100M walk to Waitara Public School and 600M walk to Mark Taylor Oval. 1945 built full brick single level Bungalow in original condition. Formal lounge and dining. 2 bedrooms plus huge sun room or potential 3rd bedroom. Laundry. Lock-up garage with gardener's WC. At land value, how can you miss?

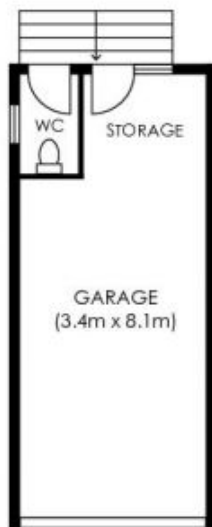
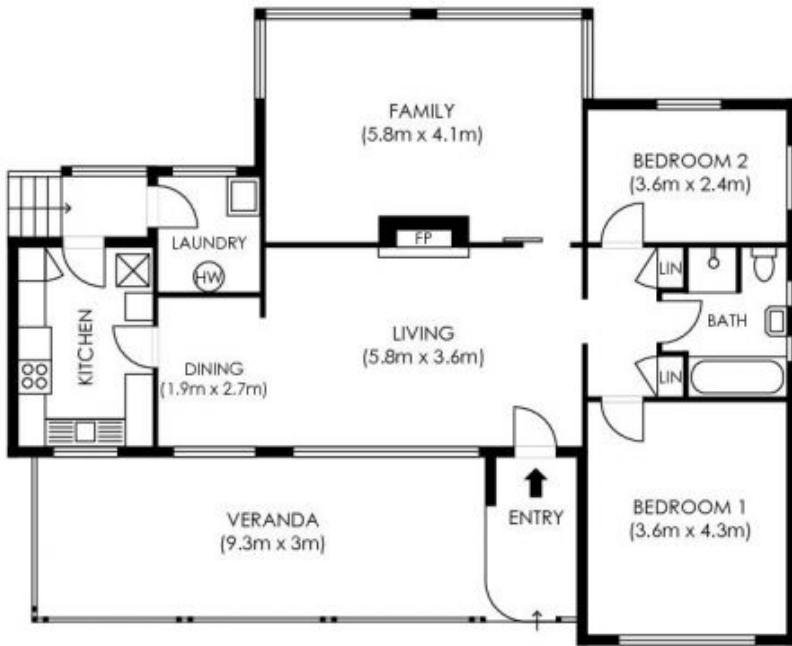
Type : House
Land Size : 973 sqm
View : <https://www.luschwitz.com.au/4569938>



Josh Luschwitz
 +612 9449 5511



John Luschwitz
 +612 9449 5511



INTERNAL AREA
APPROX = 96 sqm
GARAGE = 28 sqm

SITE PLAN
not to scale

Plans are intended as a guide only. No representations or warranties of any nature whatsoever are given or intended and any person using this information should always rely on their own enquiries. j interiors - real estate floor plans. jinteriors.info@gmail.com