



6 Orana Avenue Pymble NSW

5 🏠 3 🚿 2 🚗

A charming sunroom on entry leads to the elegant and sophisticated formal lounge and dining rooms and the character of this much loved family home is immediately evident with high, patterned ceilings, open fires, polished timber floors and quality finishes and joinery throughout.

The well-designed, granite, gas kitchen opens to the casual living, with french doors flowing to an oversize entertaining deck overlooking the sun drenched, fully tiled, ultra private pool.

4 spacious bedrooms plus a separate study or 5th bedroom and 3 modern bathrooms provide ample room for contemporary family living. Great storage including a substantial under house area with east entry, double garage with internal access and a large laundry with undercover drying space.

Type : House

View : <https://www.luschwitz.com.au/4569925>



Josh Luschwitz
 +612 9449 5511

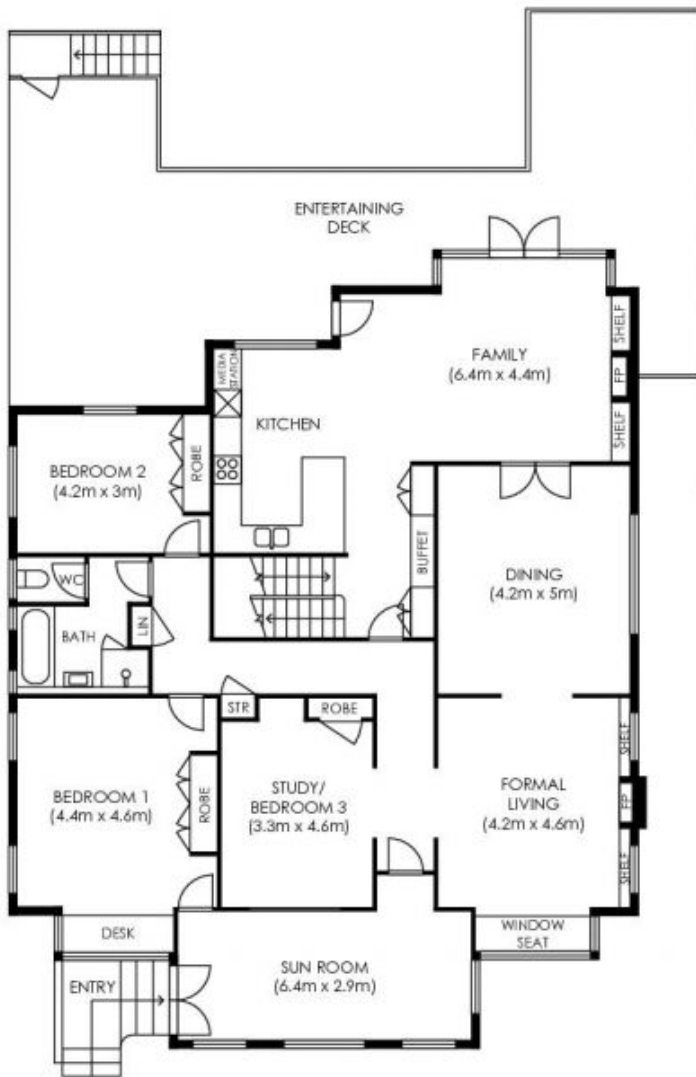


John Luschwitz
 +612 9449 5511

[For full version visit the website](#)

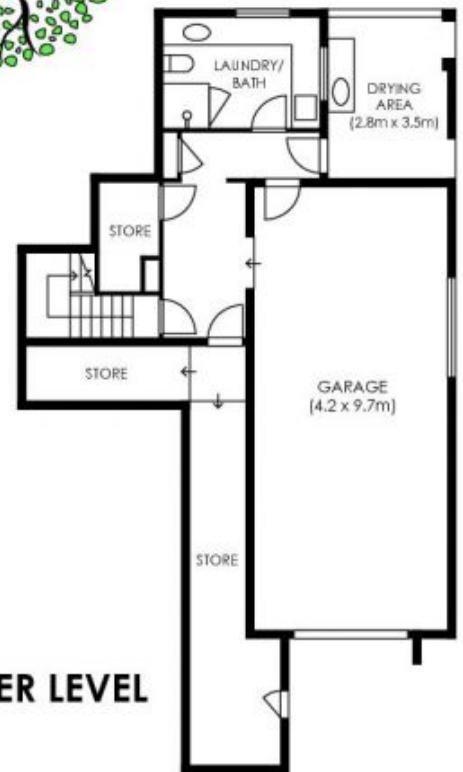


UPPER LEVEL



ENTRY LEVEL

**INTERNAL AREA
APPROX = 276 sqm
GARAGE = 41 sqm**



LOWER LEVEL

Plans are intended as a guide only. No representations or warranties of any nature whatsoever are given or intended and any person using this information should always rely on their own enquiries. www.jinteriorsinteriordesign.blogspot.com