



20 Hope Street Pymble NSW

3  2  1 

Build The Dream. Prestige East Side Location. Walk PLC and Pymble Station. Pymble Public catchment.

As rare as hen's teeth. Solid full brick home ready for renovation, expansion or knock down. This property offers a wonderful opportunity to capitalise on the location and reap the rewards. It's ideal for building your dream home, extending, or simply do a tidy up and move in to enjoy as is, so many possibilities.

Vendor has downsized and says, "Sell!" This property is a no brainer, it has location AND potential. It will go quickly! He who hesitates loses, blink and it will be gone"

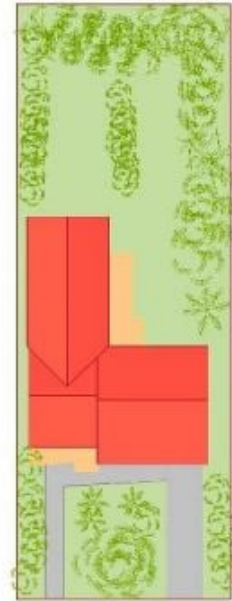
Dimensions 18.29 x 51.82 - Area 961 sqm

[For full version visit the website](#)

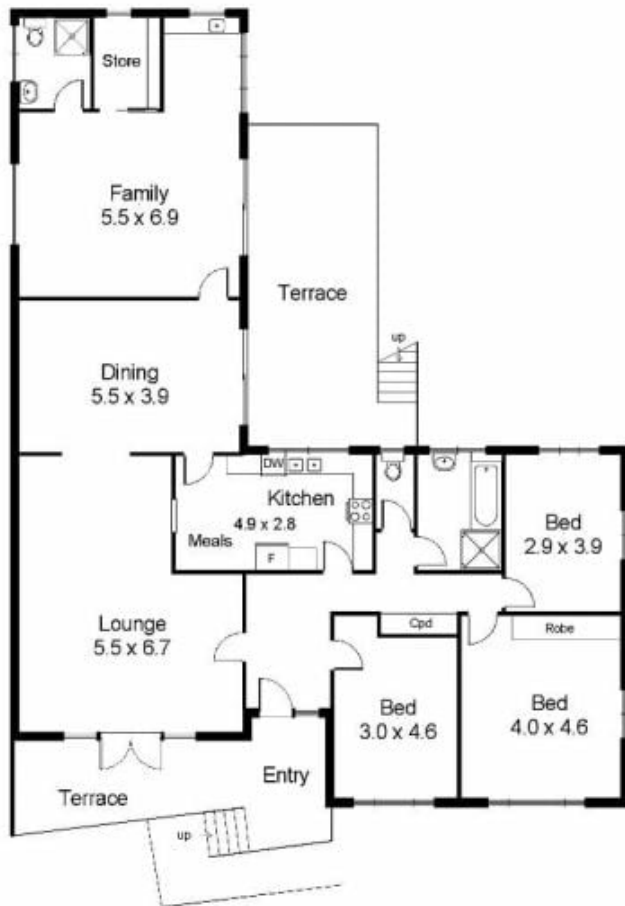
Type : House
Price : \$ 2,100,000
Land Size : 961 sqm
View : <https://www.luschwitz.com.au/4569888>



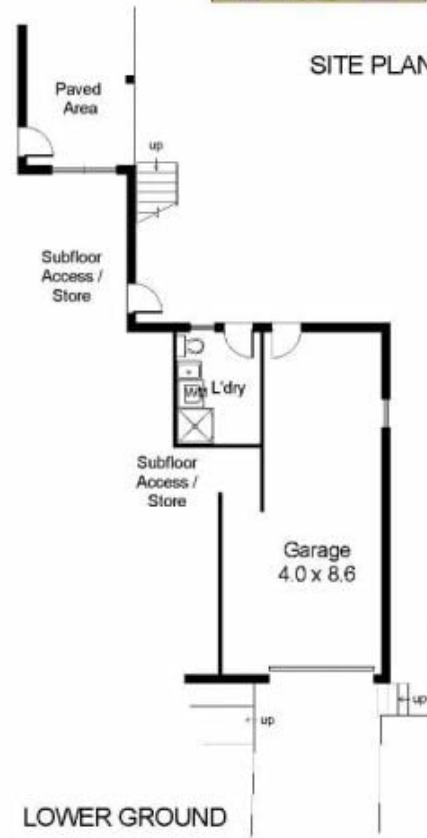
Mark Blake
+612 9449 5511



SITE PLAN



GROUND FLOOR



LOWER GROUND

20 Hope Street, Pymble

INTERNAL FLOOR AREA (approx) 228 m² :24.5 sq

Disclaimer : K & S Smith-White ABN 84 553 107 388 Trading as NORTHSIDE FLOORPLANS Pymble - Hornsby Tel. 9144 2474; Mob. 0427 442 474
This floor plan serves only as a guide for promotional purposes and should not be scaled or relied upon for any specific detail. No liability will be accepted.
Prospective purchasers should make and rely upon their own inquiries to determine the accuracy of all measurements and features.