



1/163 Pacific Highway Roseville NSW

2  1  1 

In a small quality block of only 8 Units. Circa 1978 well built and well looked after. Enjoys an abundance of natural light with floor to ceiling windows. Offers lounge and formal dining. Modern kitchen with adjoining laundry. 2 double bedrooms with built-in robes. Bathroom with vanity, shower recess and built-in bath. Separate toilet. Internal access to lock-up garage. A great opportunity not to be missed. Deceased estate selling under Executor's instructions.

Type : Unit
Price : \$ 730,000
Building Size : 132 sqm
View : <https://www.luschwitz.com.au/4569870>

APPROXIMATE OUTGOINGS:

Council Rates: \$332pq Water Rates: \$177pq Strata Levy: \$976pq



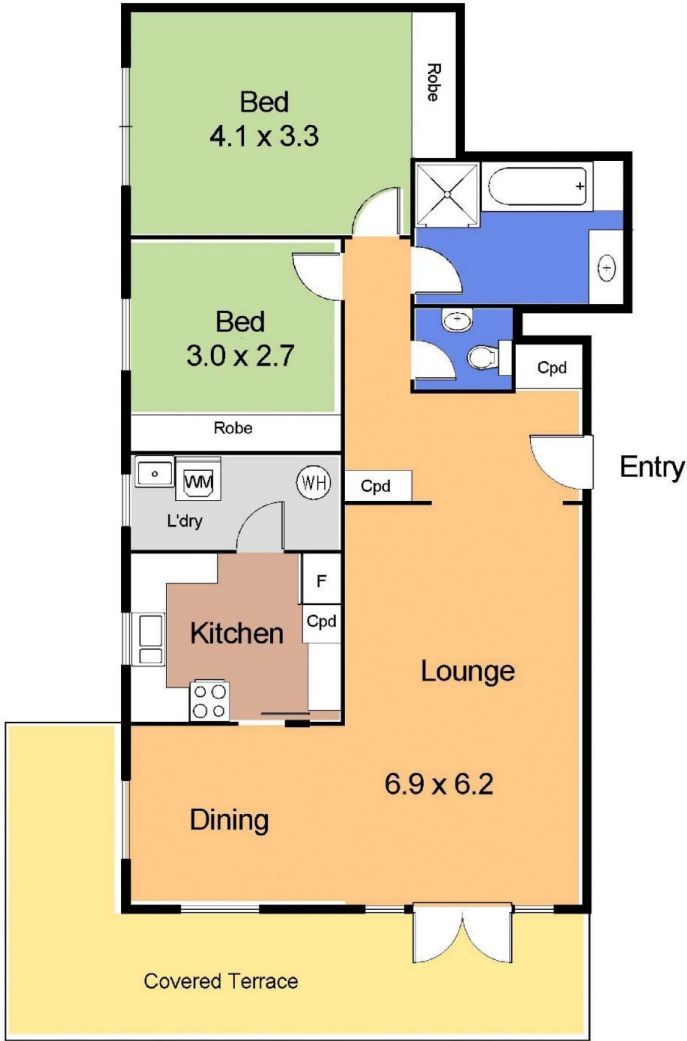
John Luschwitz
 +612 9449 5511



Josh Luschwitz
 +612 9449 5511



LOWER GROUND



GROUND FLOOR

1/163 Pacific Highway, Roseville

STRATA AREA (approx) 140 m2 :15 sq

Disclaimer : K & S Smith-White ABN 84 553 107 368 Trading as NORTHSIDE FLOORPLANS Pymble - Hornsby Tel. 9144 2474; Mob. 0427 442 474
This floor plan serves only as a guide for promotional purposes and should not be scaled or relied upon for any specific detail. No liability will be accepted.
Prospective purchasers should make and rely upon their own inquires to determine the accuracy of all measurements and features.