



10 Rawson Crescent Pymble NSW

2  1  2 

Owned by the same family since its construction in 1950, this charming 2 bedroom cottage has been impeccably maintained and offers fantastic potential. Freshly painted throughout, with great natural light, full brick construction and wide polished floorboards, you can move in now and plan your dream home for the future. Formal and casual living spaces are complemented by a sunroom with adjoining entertaining terrace overlooking the lawns and gardens. A laundry with shower and toilet, spacious lock-up garage plus carport and an ideal workshop or storage space complete the home.

The wide fronted block of 1,303 sqm enjoys an enviable East side position in a quiet, tree lined street. The well regarded Pymble public school, Princes Street shops and

Type : House
Price : \$ 1,600,000
Land Size : 1303 sqm
View : <https://www.luschwitz.com.au/4569854>



Josh Luschwitz
 +612 9449 5511

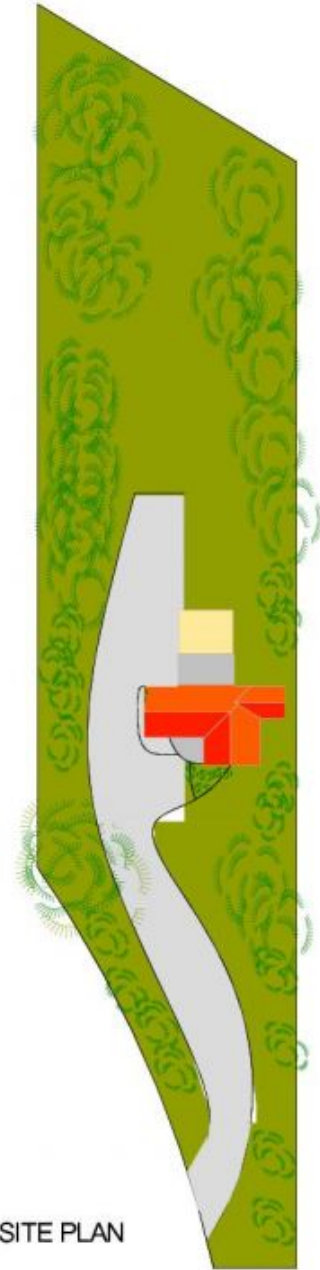
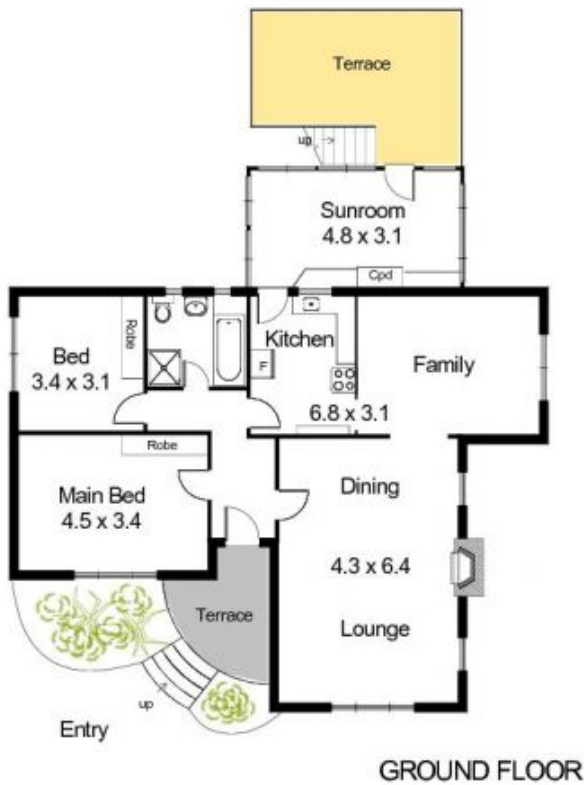
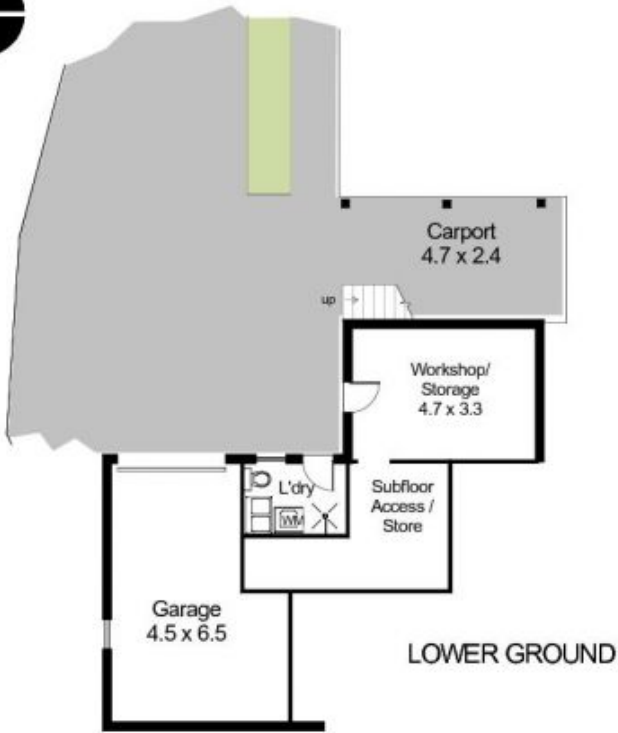


John Luschwitz
 +612 9449 5511

[For full version visit the website](#)



Luschwitz



10 Rawson Crescent, Pymble

INTERNAL FLOOR AREA (approx) 116 m2 :12.5 sq

Disclaimer : K & S Smith-White ABN 84 553 107 368 Trading as NORTHSIDE FLOORPLANS Pymble - Hornsby Tel. 9144 2474; Mob. 0427 442 474
This floor plan serves only as a guide for promotional purposes and should not be scaled or relied upon for any specific detail. No liability will be accepted.