



**11 Bell Avenue Lindfield NSW**

4  2  2 

Enormous potential with this delightful 1950's built 2-storey family home ideal to further capitalize or suitable to demolish and build your dream home.

Basking in the North sun this spacious 4 bedroom/2 bathroom residence with formal lounge, dining and family room open to outdoors.

Superb modern kitchen with double bowl sink, dishwasher, oven, and gas range. Lock up garage plus carport

Beautifully presented and ready for new owners to just move in and enjoy!

At land value, how can you miss? Definitely worth your

**Type** : House  
**Land Size** : 999 sqm  
**View** : <https://www.luschwitz.com.au/4569833>



**Josh Luschwitz**  
**+612 9449 5511**



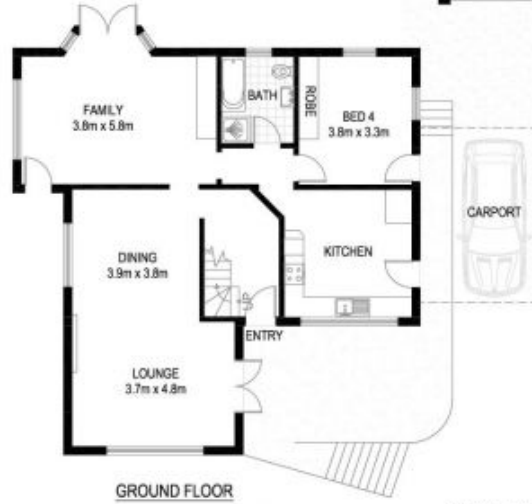
**John Luschwitz**  
**+612 9449 5511**

[For full version visit the website](#)



**LINDFIELD**  
**11 BELL AVENUE**  
\*INTERNAL FLOOR AREA APPROX 157m<sup>2</sup>

SITE PLAN



V-MARK DESIGN PTY LTD  
10/75 PACIFIC HIGHWAY  
WILKINSON NSW 2077  
OFFICE : 9489 9523  
EMAIL : [dave@v-markdesign.com.au](mailto:dave@v-markdesign.com.au)  
ABN : 12 109 067 950

\*NOTE: ALL DIMENSIONS SHOWN ARE APPROXIMATE AND SHOULD ONLY BE USED AS A GUIDE. NOT TO SCALE.