



29 Beechworth Road Pymble NSW

4  1  1 

With full brick construction, high ceilings, Queensland maple timberwork and polished boards throughout, this attractive home retains many period features and has great street appeal with a charming façade.

An elegant entry with Australian hardwood parquet flooring leads to an impressive formal lounge with open fire and the spacious formal dining room. At the rear of the house, a family room/sunroom with Tallow wood floors provides a flexible space ideal for a relaxed meals or to simply sit and enjoy the North sun.

The block, of around 935 square metres, features established gardens and has plenty of space for outdoor entertaining and for kids of all ages to play.

Type : House
Price : \$ 1,705,000
Land Size : 935 sqm
View : <https://www.luschwitz.com.au/4569825>

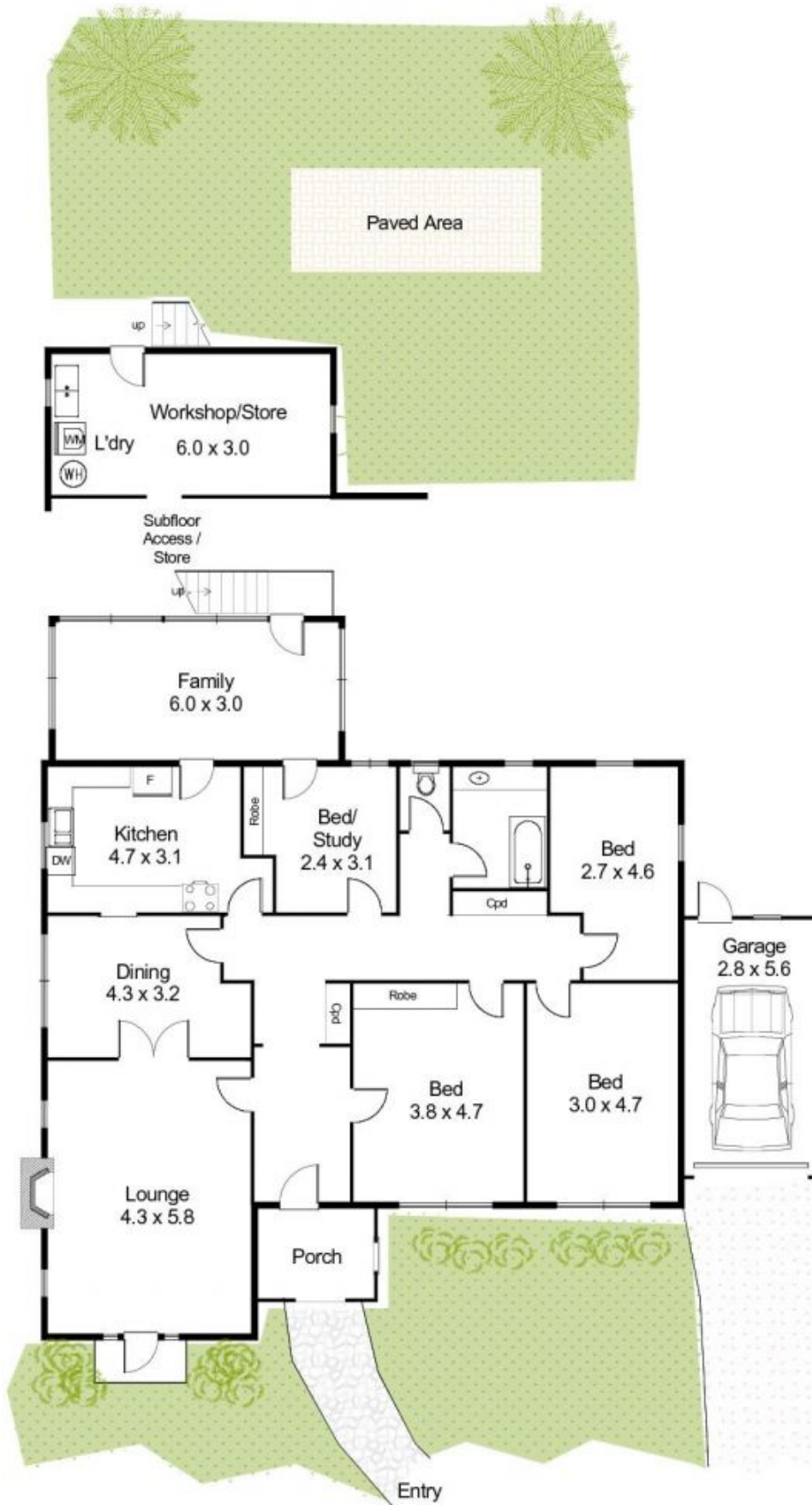


Josh Luschwitz
 +612 9449 5511



John Luschwitz
 +612 9449 5511

[For full version visit the website](#)



29 Beechworth Road, Pymble

INTERNAL FLOOR AREA (approx) 178 m² :19 sq

Disclaimer : K & S Smith-White ABN 84 553 107 368 Trading as NORTHSIDE FLOORPLANS Pymble - Hornsby Tel. 9144 2474; Mob. 0427 442 474
This floor plan serves only as a guide for promotional purposes and should not be scaled or relied upon for any specific detail. No liability will be accepted.