



**66 Holtermann Street Crows Nest NSW**

4 🛏 2 🚿 2 🚗

A rare opportunity with enormous potential and endless possibilities including home industry or extra accommodation.

This beautifully restored superb character late Victorian Terrace has many fine features including shady verandahs, large light filled rooms, open fire places, high ceilings, polished timber floors and French doors opening to private north facing gardens ideal for alfresco dining and entertaining

Entry vestibule. Separate formal lounge and dining rooms. Large designer eat in kitchen with granite bench tops and stainless steel appliances. Three generous bedrooms in main house and guest bedroom, office and studio in rear

**Type** : House  
**Land Size** : 341 sqm  
**View** : <https://www.luschwitz.com.au/4569799>



**Josh Luschwitz**  
**+612 9449 5511**

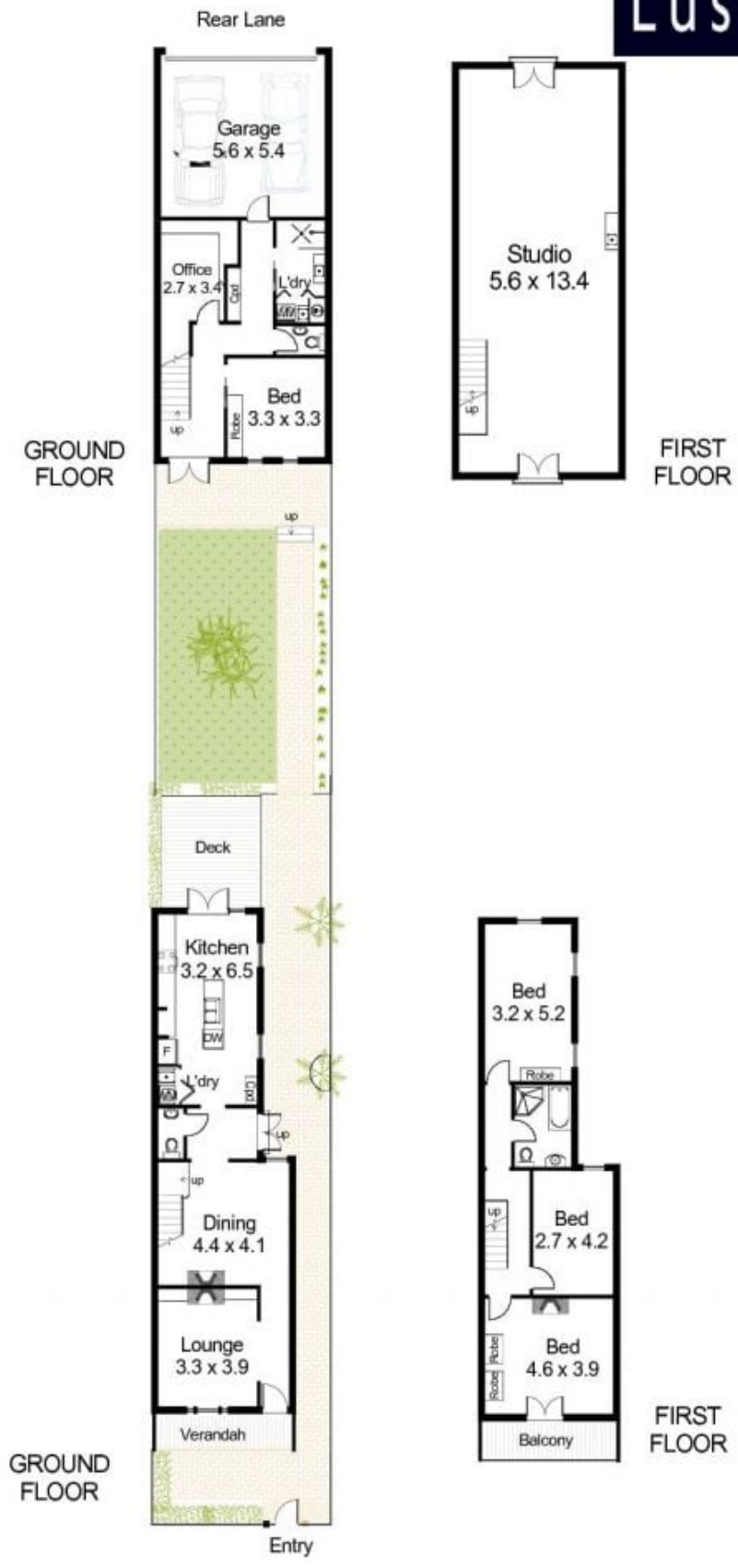


**John Luschwitz**  
**+612 9449 5511**

[For full version visit the website](#)



# Luschwitz



## 66 Holtermann Street, Crows Nest

INTERNAL FLOOR AREA (approx) 292m<sup>2</sup> :31.5 sq

Disclaimer : K & S Smith-White ABN 64 553 107 368 Trading as NORTHSIDE FLOORPLANS Pymble - Hornsby Tel. 9144 2474; Mob. 0427 442 474