



24a Wellesley Road Pymble NSW

4 🏠 2 🚗 2 🚗

Featuring an impressive street frontage, this fantastic home is being offered for the first time in over 42 years.

Designed by a well known, award winning architect and exceptionally well built, this instantly appealing 1963 Colonial Bungalow is nestled on a superb and private 885M bowling green level garden block basking in the northern sun.

Quality full brick construction with high ceilings, bay window, French doors and large light filled rooms that add to the charm.

In a premier East side location just 700M stroll to the station, shops and PLC.

Type : House
Building Size : 240 sqm
Land Size : 885 sqm
View : <https://www.luschwitz.com.au/4569764>



Josh Luschwitz
+612 9449 5511

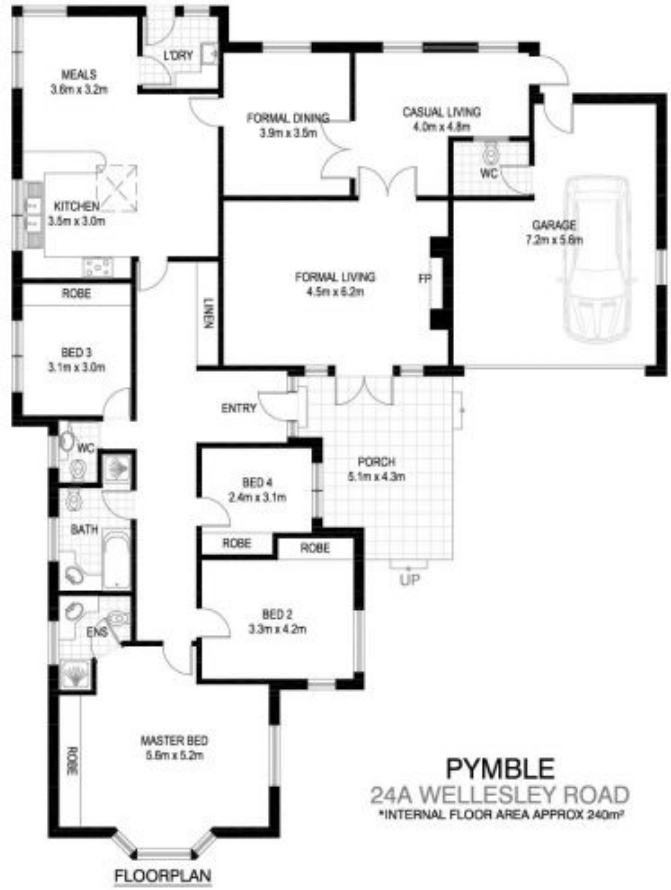


John Luschwitz
+612 9449 5511

[For full version visit the website](#)



SITE PLAN



FLOORPLAN

PYMBLE
24A WELLESLEY ROAD
*INTERNAL FLOOR AREA APPROX 240m²



V-MARK DESIGN PTY LTD
18/25 PACIFIC CROWLEY
MELBOURNE VIC 3001
OFFICE: 0438 9603
CALL: 0800 688 888
WWW.V-MARKDESIGN.COM.AU
ABN: 12 108 067 900

*PLANS SHOWN ONLY INDICATIVE OF LAYOUT. DIMENSIONS ARE APPROXIMATE.

Floor plan supplied by V-Mark Design Pty Ltd. This floor plan is provided for indicative purposes only.

Measurements are approximate and not to scale. The vendor, agency and supplier will accept no liability for its accuracy. Interested parties are advised to make their own independent enquiries.