



16 The Chase Road Turramurra NSW

4 🛏 3 🚿 2 🚗

Magnificent level block of land of approximately 1400 sqm with a very wide frontage of 23 meters, and a perfect north-to-rear aspect, this period home is ready for a new owner.

Type : House
Land Size : 1400 sqm
View : <https://www.luschwitz.com.au/4569760>

This residence is of a very solid double brick construction, comprising of 4/5 bedrooms, 3 bathrooms, formal lounge and separate formal dining room. The kitchen is fitted with stone bench top and stainless steel appliances adjoining the sunny casual meals area/family room that leads to the sunroom and flows out to the north facing enormous back garden.



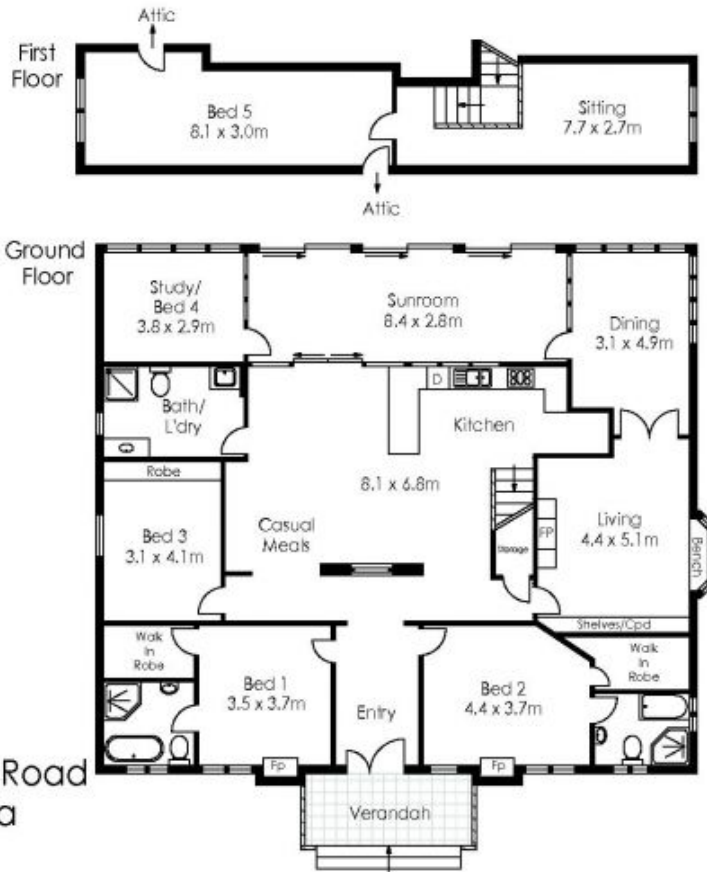
Ceto Sandoval
+ 612 9449 5511



Josh Luschwitz
+612 9449 5511

[For full version visit the website](#)

Internal Floor Area Approx: 250m²



16 The Chase Road
Turramurra



Site Plan (Scale approximate)