



14 Torokina Avenue St Ives NSW

5  3  3 

Impeccably presented sumptuous Family Residence of exceptional quality. Architect designed with excellent flow to fabulous outdoor living and entertaining areas. Over 2000M beautiful level grounds in picturesque setting bathed in all the northern sun

Large lounge and formal dining with bi-folds opening to the gardens. Huge family casual living room with auto gas log fireplace, Bose sound system, timber floor and bi-fold doors opening to sunny terrace overlooking the tennis court

Filled with an abundance of natural light and built with no expense spared. Designer kitchen with casual meals area, Corian stone bench tops, Miele appliances with 2 ovens, induction cook top, 2 dishwashers, steamer, coffee

Type : House
Building Size : 500 sqm
Land Size : 2004 sqm
View : <https://www.luschwitz.com.au/4569724>



Josh Luschwitz
 +612 9449 5511



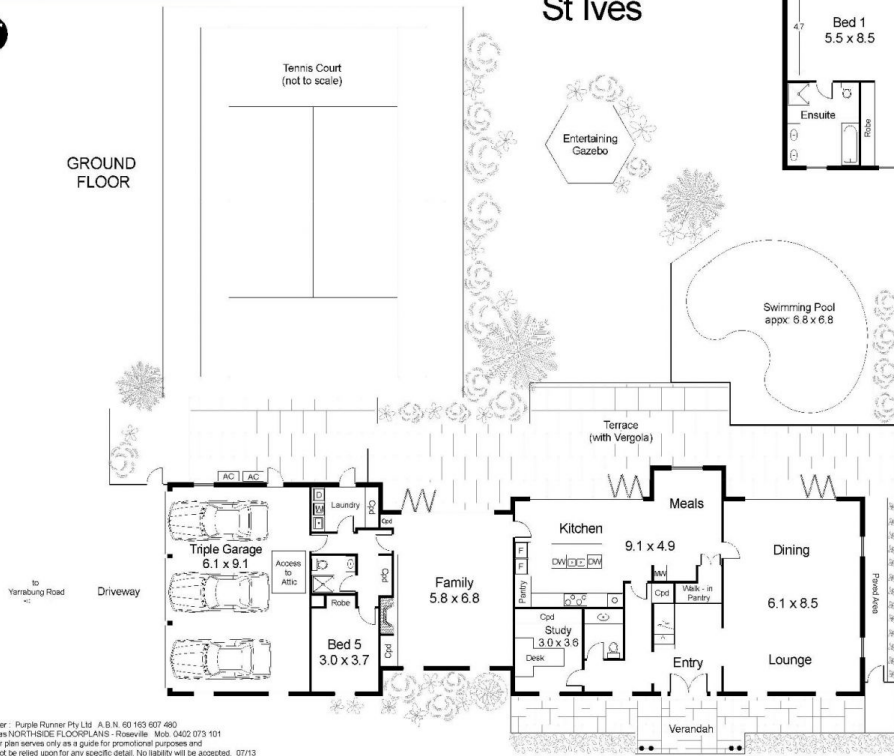
John Luschwitz
 +612 9449 5511

[For full version visit the website](#)

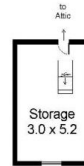
14 Torokina Avenue St Ives



GROUND FLOOR



FIRST FLOOR



FIRST FLOOR
(above Garage)

Disclaimer - Purple Runner Pty Ltd. A.B.N. 60 163 607 480
Trading as NORTHSIDE FLOORPLANS - Roseville. Mob. 0402 073 101
This floor plan serves only as a guide for promotional purposes and
should not be relied upon for any specific detail. No liability will be accepted. 07713