



218 Bobbin Head Road Turramurra NSW

6 🚗 5 🚗 2 🚗

Grand (approx building size 490M2) UNFINISHED brick and concrete slab constructed residence. Set on approximately 1400sqm garden block with pool shell and incomplete cabana. Excellent flow to alfresco dining and entertaining. Located close to the waterways of Bobbin Head, level walk to shops, schools, station bus and City Express bus. Ideal for someone with construction knowledge and building experience.

Type : House
Building Size : 490 sqm
Land Size : 1400 sqm
View : <https://www.luschwitz.com.au/4569713>

Warning - this is a construction site so please call to arrange inspection and NO children at inspections please.



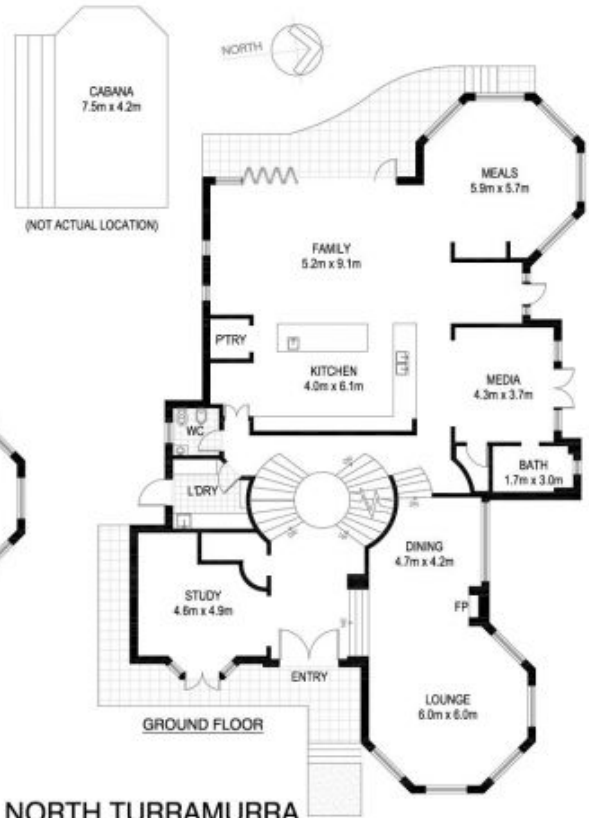
Josh Luschwitz
 +612 9449 5511



John Luschwitz
 +612 9449 5511



SITE PLAN



NORTH TURRAMURRA
218 BOBBIN HEAD ROAD
*INTERNAL FLOOR AREA APPROX 490m²



V-MARK DESIGN PTY LTD
15/25 PACIFIC COUNTRY
MELBOURNE VIC 3047
OFFICE: 0438 9603
CALL: 0800 666 666
WWW.V-MARKDESIGN.COM.AU
ABN: 12 108 067 960

*PLANS SHOWN ONLY INDICATIVE OF LAYOUT. DIMENSIONS ARE APPROXIMATE.

Floor plan supplied by V-Mark Design Pty Ltd. This floor plan is provided for indicative purposes only.

Measurements are approximate and not to scale. The vendor, agency and supplier will accept no liability for its accuracy. Interested parties are advised to make their own independent enquiries.