


www.rpdata.com


103 Douglas Street St Ives NSW

5 🛏 3 🚿 3 🚗

This as new contemporary home is an entertainers retreat and a private sanctuary of comfort and style with magical gardens. On arrival there is an immediate impression of space, sophistication & ease of family living. Many fine features including generous living rooms feature formal lounge and dining areas that lead to extensive terracing. Huge family area offering seamless indoor/outdoor living. Wide alfresco terrace incorporating a spacious BBQ area, level lawns and enormous heated pool. Luxurious master bedroom with en-suite, walk-in robe. 4 further bedrooms serviced by an exquisite bathroom plus additional powder room. Superb family oriented kitchen setting a new benchmark in quality, style and function. Fully fitted home office along with cellar and an abundance of storage. Ducted air-conditioning, alarm, polished timber floors

Type : House

View : <https://www.luschwitz.com.au/4569712>

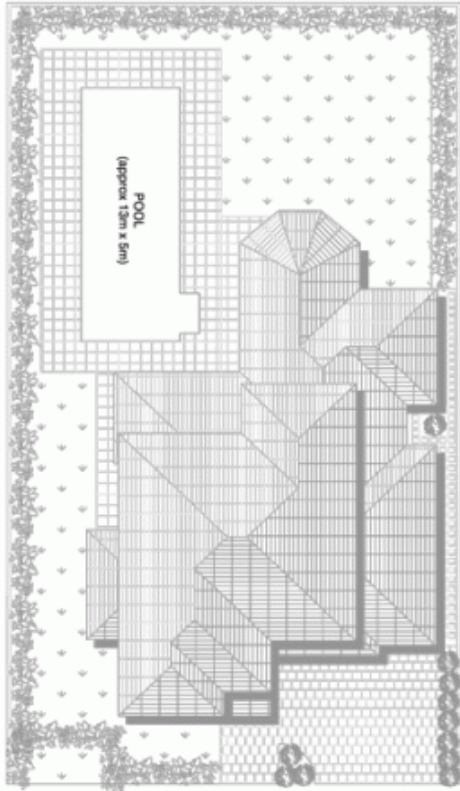


Ceto Sandoval
 + 612 9449 5511



Josh Luschwitz
 +612 9449 5511

[For full version visit the website](#)



SITE PLAN



V-MARK DESIGN PTY LTD
 18/75 PACIFIC HIGHWAY
 WILSHAM 5038 2077
 OFFICE : 5482 9523
 EMAIL : dm@vmarkdesign.com.au
 ABN : 12 108 967 990

ST IVES
 103 DOUGLAS STREET
 *INTERNAL FLOOR AREA APPROX 413m²



*FLANS SHOWN ONLY INDICATIVE OF LAYOUT. DIMENSIONS ARE APPROXIMATE.
 Floor plan supplied by V-Mark Design Pty Ltd. This floor plan is provided for indicative purposes only.
 Measurements are approximate and not to scale. The vendor, agency and supplier will accept no liability for its accuracy. Interested parties are advised to make their own independent enquiries.