



### 15/822 Pacific Highway Chatswood NSW

1  1  1 

"Somerset" Exceptionally well built building brilliantly designed by renown architect Henry Pollack the founder of Mirvac Limited, this instantly appealing, light and bright strata unit has much to offer. Level access with no steps. Vast living area with offset formal dining and eat-in kitchen flowing to over sized covered balcony ideal for entertaining and relaxed alfresco dining. Naturally ventilated bathroom, separate toilet and own laundry with drying balcony. Lock up garage and storage area and ample visitor parking.

Situated in a well-maintained, sought-after building with manicured gardens, the units are set back from the highway with two-street entry in a quiet position. Approximate 500m walk to Chatswood Railway Station, moments to Chatswood Chase, Westfield and one the best

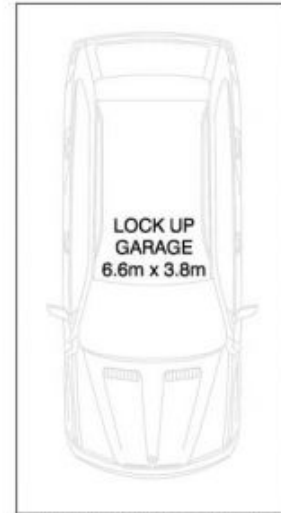
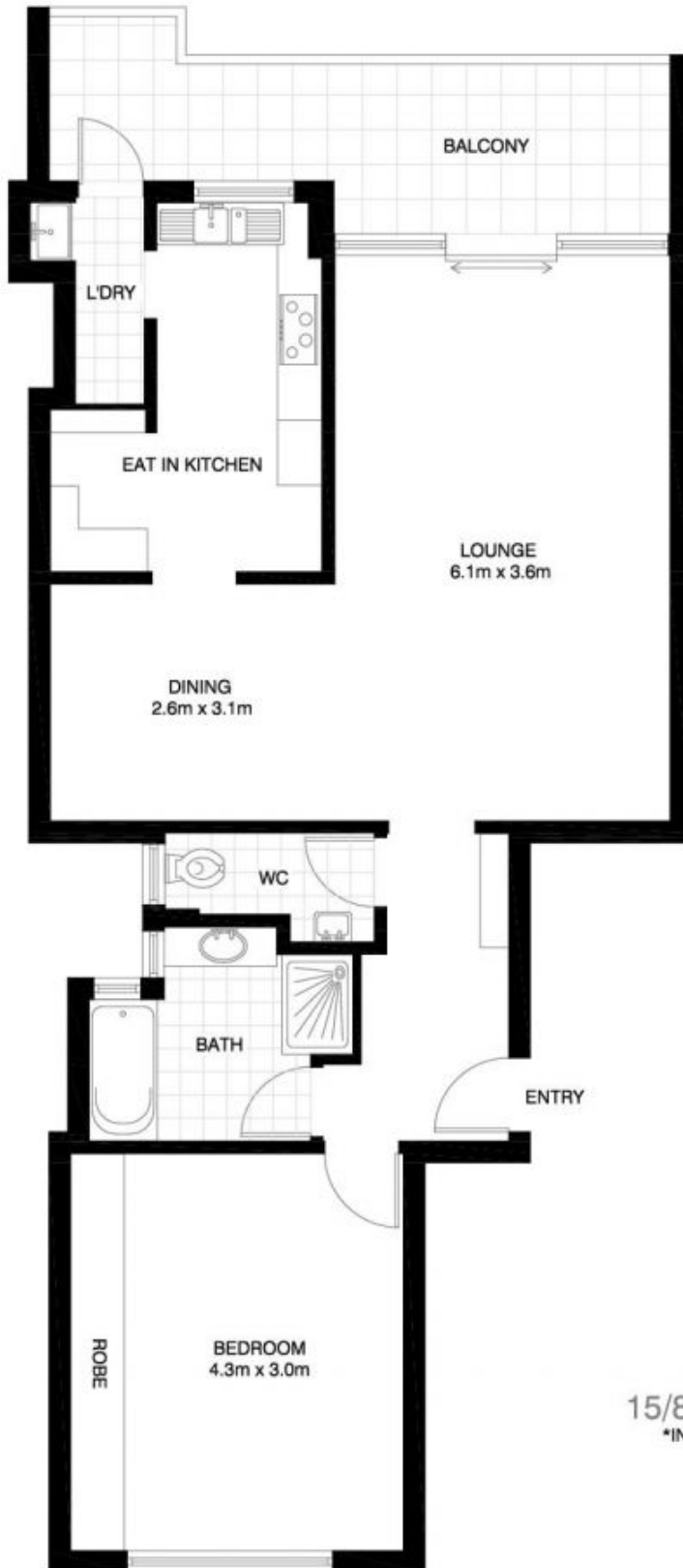
**Type** : Apartment

**View** : <https://www.luschwitz.com.au/4569708>



**Josh Luschwitz**  
**+612 9449 5511**

[For full version visit the website](#)



(NOT ACTUAL LOCATION)

**CHATSWOOD**  
15/822 PACIFIC HIGHWAY  
\*INTERNAL FLOOR AREA APPROX 45m<sup>2</sup>



V-MARK DESIGN PTY LTD  
18/75 PACIFIC HIGHWAY  
NORTHMAN NSW 2077  
OFFICE : 9489 9023  
EMAIL : [dave@vmarkdesign.com.au](mailto:dave@vmarkdesign.com.au)  
ABN : 12 109 067 950

\*PLANS SHOWN ONLY INDICATIVE OF LAYOUT. DIMENSIONS ARE APPROXIMATE.

Floor plan supplied by V-Mark Design Pty Ltd. This floor plan is provided for indicative purposes only.

Measurements are approximate and not to scale. The vendor, agency and supplier will accept no liability for its accuracy. Interested parties are advised to make their own independent enquiries.