



10 The Chase Road Turramurra NSW

5 🏠 4 🚗 2 🚘

Very appealing spacious 2-storey family home in a sought after east side location within a short stroll to the schools, shops and station. Set is superb 1208M grounds enjoying a perfect private rear-to-north aspect, swimming pool, 1/2 tennis court and lots of lawn area for the children to play.

Designed for the growing family with 5 bedrooms, 4 bathrooms and multiple living areas with excellent flow to covered alfresco dining area complete with outdoor kitchen.

There is also a separate self contained accommodation which is ideally suitable for Guests, In-Laws, Nanny or a Teenager's Retreat.

Type : House
Land Size : 1208 sqm
View : <https://www.luschwitz.com.au/4569702>

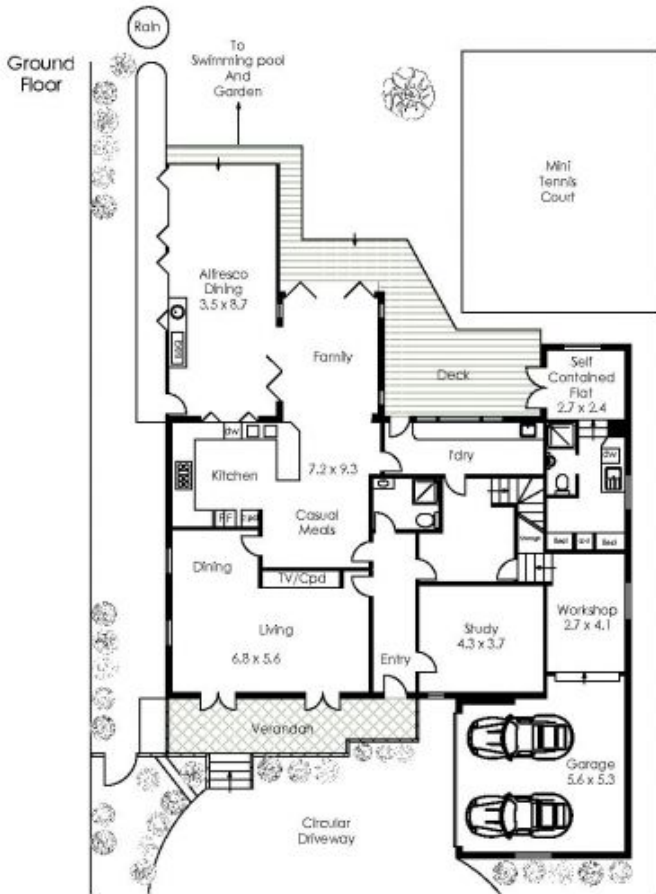


Ceto Sandoval
 + 612 9449 5511



Josh Luschwitz
 +612 9449 5511

[For full version visit the website](#)



Inset



First Floor



Internal Floor Area approx: 340m²
 Disclaimer - Purple Runner Pty Ltd ABN 82 143 807 480
 Trading as NORTH SIDE FLOORPLANS ROBEVILLE
 Mob: 0882 073 125
 09/13
 This floorplan serves only as a guide for promotional purposes and should not
 be relied upon for any specific detail. No liability will be accepted.

10 The Chase Road, Turramurra